

COLLINS AEROSPACE ECMT Importing Checklists PRESENTATION

April 2021



CASE ECMT: Importing Checklists

TABLE OF CONTENTS

- Overview
- Checklists provided by an OEM
- Checklists provided by RCCT Export
- New Blank Dataset
- Import
- Results
- Select a CIDB

CASE ECMT: Importing Checklists

Overview

The Electronic Checklist Management Tool (ECMT) supports importing a dataset from either an OEM provided loadable checklist mediaset, or the legacy Rockwell Collins Checklist Tool (RCCT).

- Import is accomplished in the following steps:
 - Obtain the checklist file to import:
 - From the OEM checklist portal
 - (Or) Export from Legacy RCCT
 - Create a new empty dataset in EMCT
 - Create a Work Package for the empty dataset
 - Use the Import feature in ECMT

CASE ECMT: Importing Checklists

Checklists provided by an OEM

If an OEM is providing baseline checklists for your aircraft, these may be imported into ECMT for customization.

In most cases, the OEM provided loadable checklist mediasset can be imported directly into ECMT. However, in some circumstances the OEM may also provide an XML file for the specific purpose of importing into ECMT.

Navigate to the OEM website or portal where checklists are provided and download the appropriate file to your computer.

Make sure to note the appropriate aircraft software version that the loadable checklist mediasset is valid for.

CASE ECMT: Importing Checklists

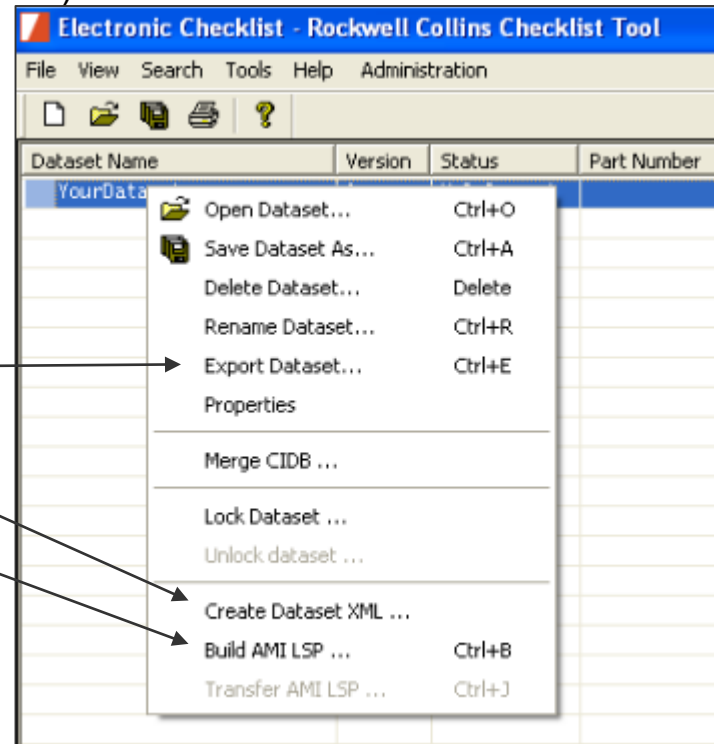
Checklists provided by RCCT Export

If you currently have the RCCT tool installed, and have previously defined checklists in it, you may extract these checklists for import into ECMT.

Build or export the desired dataset from RCCT. This can be accomplished by:

- The Export Dataset command (XML file)
- The Create Dataset XML command (XML file)
- The Build AMI LSP command (AMI file)

1. In RCCT, right click the target dataset
1. From the right click menu, select a build option:
 - Export Dataset
 - Create Dataset XML
 - Build AMI LSP



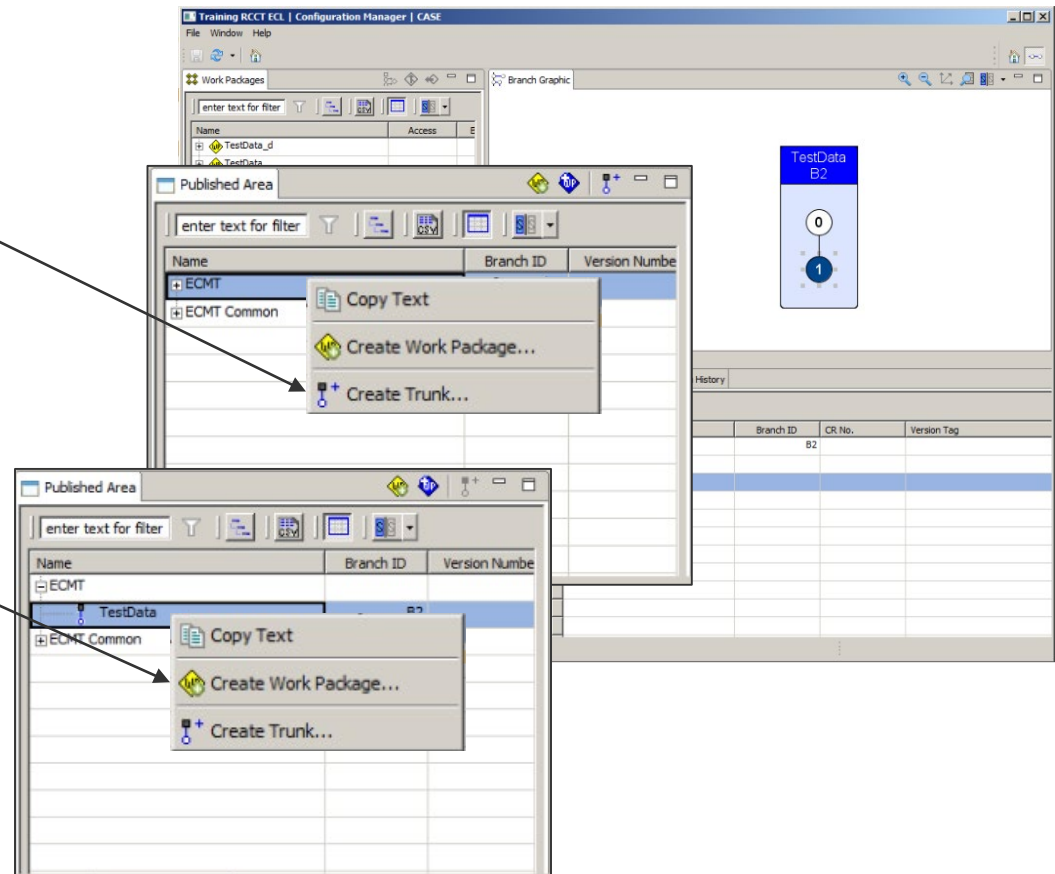
CASE ECMT: Importing Checklists

New Blank Dataset

Next you will need to create a blank dataset in ECMT to hold the data:

It is important to have a completely empty dataset to start, or else the import will create duplicate checklists.

1. In ECMT, open Configuration Manager
1. In the Published Area, right click the ECMT root node and select Create Trunk
1. Fill in the required fields of the Create Originating Dataset dialog and select the Create button when ready
 - See Config Management Basics for more info
1. Back in the Published Area, right click the new dataset and Select Create Work Package
1. Fill in the required fields of the Create Work Package dialog and select the Finish button when ready
 - See Config Management Basics for more info

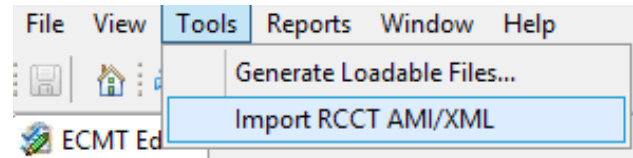
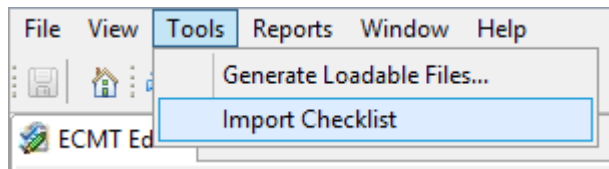


CASE ECMT: Importing Checklists

Import

Now we are ready to import:

1. Open ECMT for the newly created Work Package
2. Select “Import Checklist” or the “Import RCCT AMI/XML” from the Tools menu.



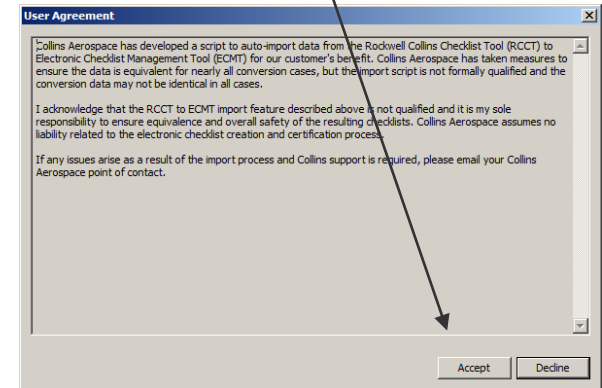
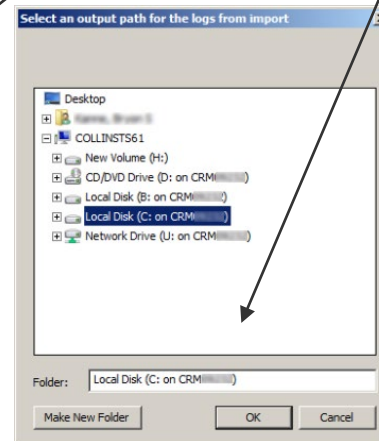
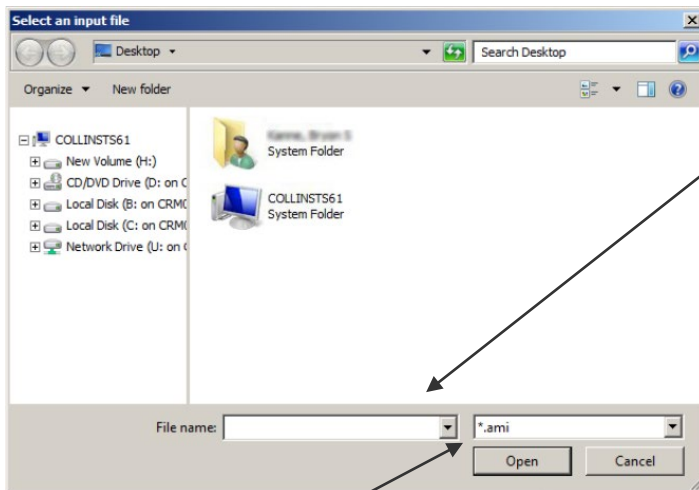
CASE ECMT: Importing Checklists

Import

The Import process will you prompt for:

- Selecting the file to import
- Selecting a path to place the import Log
- User Agreement

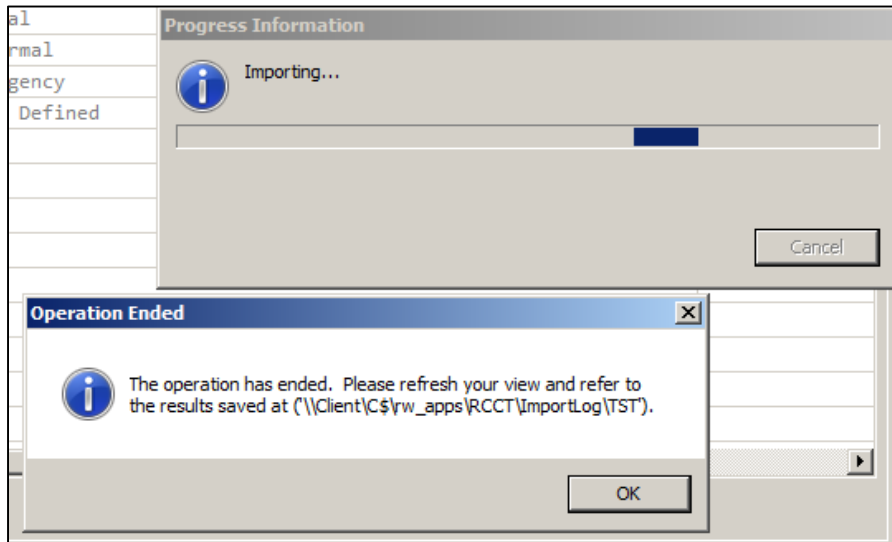
1. Select an input file
2. Click Open
3. Select a folder for the log from the import
4. Click OK
5. Click Accept for the User Agreement
 - Please read this carefully
 - The import will begin once the agreement is accepted



- You may need to toggle the file extension filter to match the file being imported. This could be either a BIN, XML, AMI, or ZIP file.

CASE ECMT: Importing Checklists

Results



- When finished, you will see a message that the operation has ended.
- The imported data is now present in the Work Package, and any errors or warnings will be noted in the log file saved at the indicated output path.
- The import will show this message regardless of whether the import was completely successful or not. **It is important to review the returned log.**

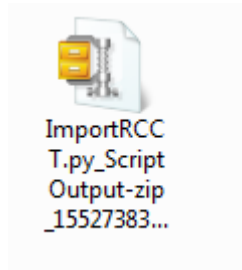
CASE ECMT: Importing Checklists

Results



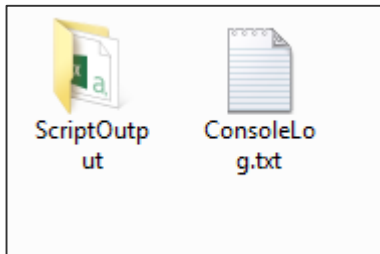
ImportECMTChecklists.py_ScriptOutput.zip

OR



ImportRCC
T.py_Script
Output-zip
_15527383...

- The logs from importing are saved in a ZIP file at the given path.
- Open the zip file and extract the ScriptLog.csv from the ScriptOutput folder.
- Open the ScriptLog.csv and review it for any errors or warnings.
- After import, ECMT will need to be refreshed to show the newly created data. You may now review the resulting checklists and make any corrections as necessary.



ScriptOutput

ConsoleLog.txt

	A	B	C	D	E	F	G	H
1	<module>	INFO	Importing new CIDB					
2	<module>	INFO	Dataset already had a CIDB specified; Import will not update it.					
3	runImport	INFO	Importing for root Normal					
4	runImport	INFO	Importing for root Abnormal					
5	runImport	INFO	Importing for root Emergency					
6								
7								

CASE ECMT: Importing Checklists

Select a CIDB

- After importing a set of checklists, it is important to confirm and select the CIDB (CAS Information Database) which matches the aircraft software version appropriate to the checklists.
- Select “Modify CIDB Applicability” from the File menu.
- Check the “Applicable” box for the appropriate version.
- If the selected CIDB is not compatible with the checklists, you will see Errors/Warnings in the ECMT editor.

