

# COLLINS AEROSPACE

## How to access ECMT PRESENTATION

April 2019



# CASE ECMT: How to access ECMT

## TABLE OF CONTENTS

- Overview
- Collins Aerospace Connect portal
- Citrix Application Portal
- Login
- Workbench

# CASE ECMT: How to access ECMT

## Overview

The Electronic Checklist Management Tool (ECMT) is a part of the CASE tool suite which can be accessed via Collins web portals.

Users will need to navigate the following portals to gain ECMT access:

- The Collins Aerospace Connect portal
- Citrix application server
  - Collins server splash
- CASE application
  - Program selection
  - Program EULA acceptance

# CASE ECMT: How to access ECMT

## Collins Aerospace Connect portal

Access to the Citrix hosted CASE application is provided through the Collins Aerospace Connect portal:

1. Using Microsoft Internet Explorer, navigate to:  
<https://rcpx.rockwellcollins.com/>
1. Using your Collins supplied Alliance login credentials
1. Enter your user name and password
  - If you do not have Collins supplied Alliance login credentials, please contact: case-acct-mgmt@rockwellcollins.com.
1. Clicking the Sign In button will log you into the Collins Aerospace Application Dashboard.
  - If you experience a login error, please call : 1-866-786-0290.

**Rockwell Collins**  
Building trust every day

CAREERS / NEWS & EVENTS

CUSTOMERS / SUPPLIERS / EMPLOYEES

OUR COMPANY / PRODUCTS & SYSTEMS / SERVICE & SUPPORT / INVESTOR RELATIONS / CONTACT US

**Username:**

**Password:**

**Primary Office and/or Network:**  
Alliance

**Sign In**

**Welcome**  
Enter your credentials in the boxes to the left and click the 'Sign In' button.

If you do not know your sign in credentials or require assistance, please contact the IT Service Desk (ITSD) using the phrase: Rockwell Collins Project Exchange Remote Access.

**ITSD Contact Numbers**  
319.295.2000  
1.866.786.0290 (U.S. only Toll Free)

**Message Center**  
The Message Center displays any information or error messages that may occur.

Notice: This site is made available exclusively for collaboration activities that have been authorized by Rockwell Collins. Anyone attempting unauthorized access to this site will be subject to prosecution to the fullest extent of the law.

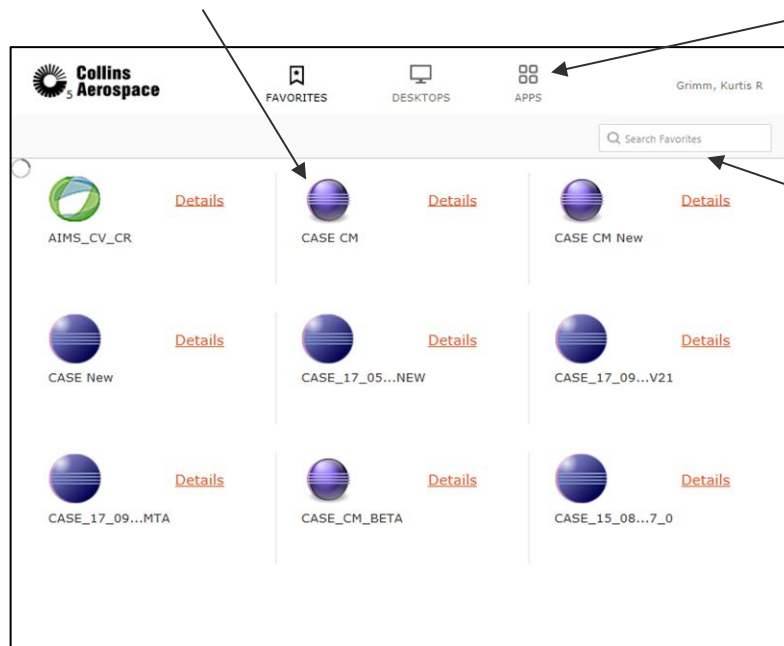
HOME | ABOUT US | PRODUCTS AND SYSTEMS | SERVICE AND SUPPORT | INVESTOR RELATIONS | NEWS | CAREERS | SUPPLIERS  
Copyright © Rockwell Collins, Inc., All rights reserved. Terms of Access | Privacy Statement | Cookie Statement

# CASE ECMT: How to access ECMT

## Citrix Application Portal

### Launching CASE from the Citrix Application Portal:

- The favorites section is displayed by default.
- A single click on the CASE CM icon will launch the application



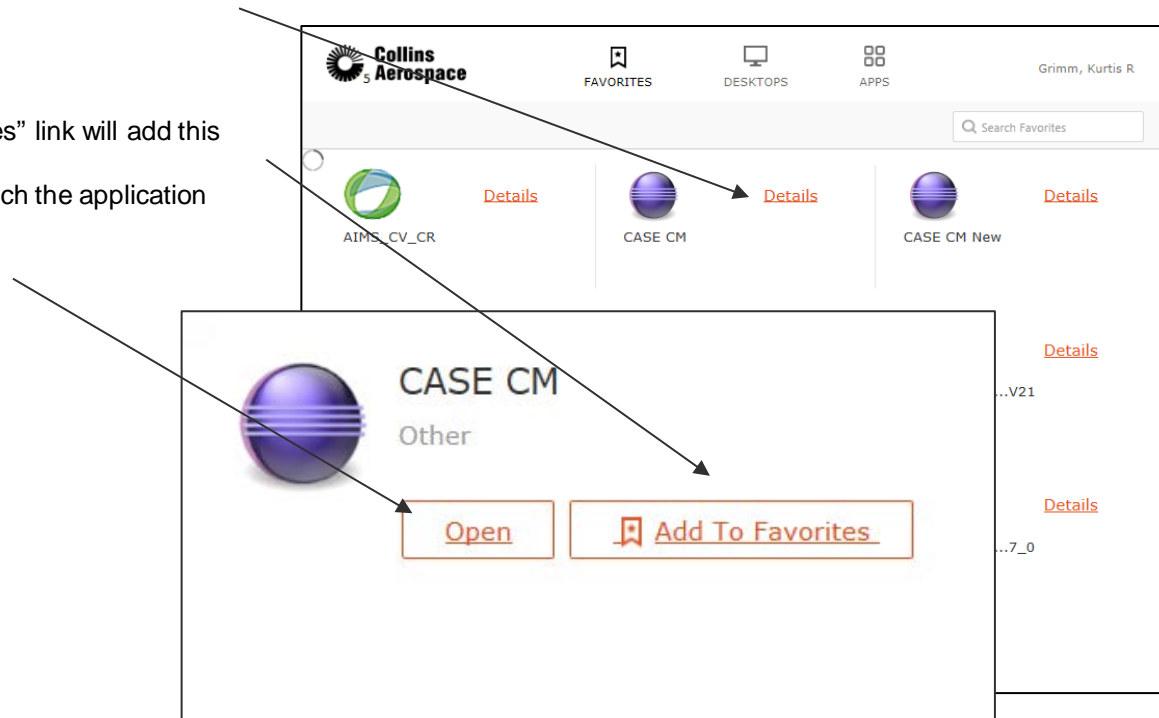
- If you do not see the CASE CM icon in this section, please select the apps tab.
- This will display all available applications.
- A filtered search text box is in the upper right hand corner
- Entering the name of the application you wish to use will filter the visible icons
  - If you still do not see the expected application icon, please contact case-acct-mgmt@rockwellcollins.com.

# CASE ECMT: How to access ECMT

## Citrix Application Portal

### Alternate application icon options:

- The details link associated with each icon provides the ability to add the icon to the favorites tab
- Selecting the “Add To Favorites” link will add this icon to the favorites tab
- Clicking the open link will launch the application



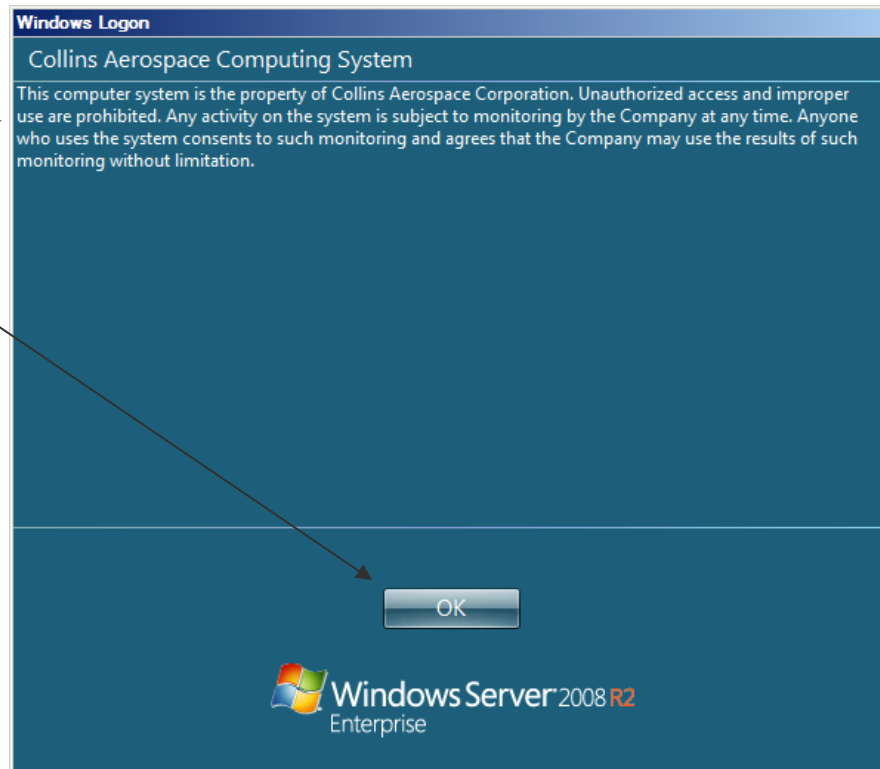
# CASE ECMT: How to access ECMT

## Login

### Windows Server info dialog

1. Please read this disclaimer

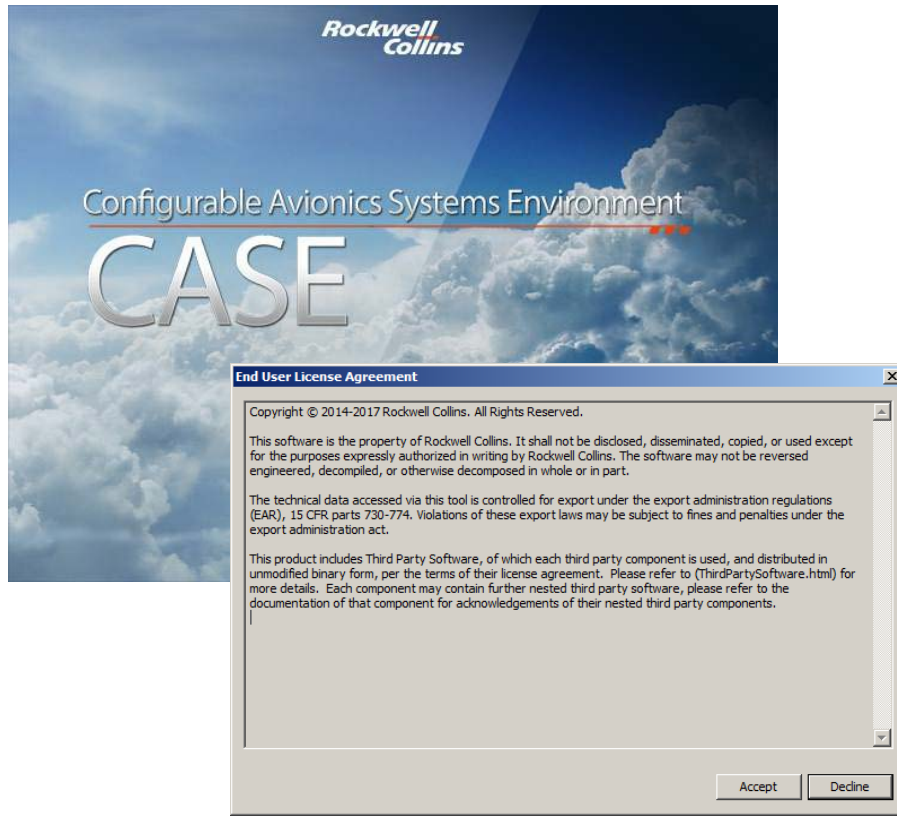
1. Click the ok button.



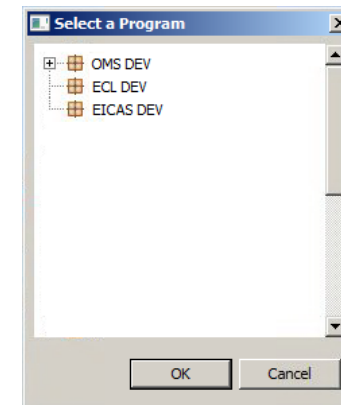
# CASE ECMT: How to access ECMT

## Login

After the Windows login is complete, the CASE splash screen will be displayed and then a possible program selection followed by a License Agreement:



If you have access to more than one program, you will see the program selection dialog:



1. Select the desired program
2. And click the ok button

1. Read the EULA
2. And click the Accept button



# CASE ECMT: How to access ECMT

## Workbench

The CASE workbench will be displayed and contains:

- The Published Area
- Available work packages

1. Expand the desired work package by clicking the plus sign on the side

1. And double clicking the desired "ECMT Dataset" within the expanded Work Package

ECMT will be opened

