

# COLLINS AEROSPACE DOWNLOADING THE DATABASE FROM THE ROCKWELL COLLINS WEB PORTAL AND UNZIPPING TO YOUR USB FLASH DRIVE

JANUARY 2019



# RULES

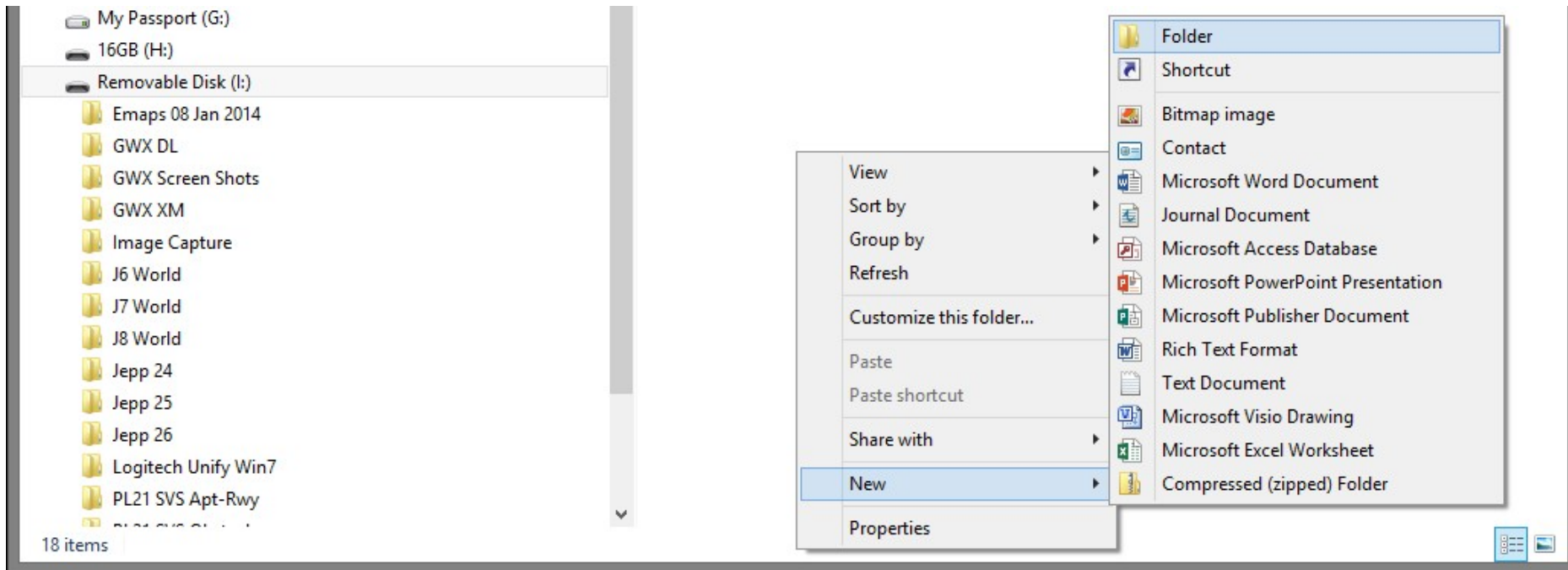


- Make sure you are using USB 2.0
- The size of the USB drive is limited to 8Gb.
- Make sure there are no Microsoft loadable files on the drive.
- The DBU-5000 supports file transfer operations from USB memory drives compatible with FAT16 or FAT32 file systems. Although the DBU will support either file system, the preferred system is FAT32.
- USB 3.0 does not work in the DBU-5000. The blue connector identifies it as 3.0.
- Create Folders for each database when using the MCDU menu on the CDU.
- Loading through DB DISKOPS requires the Navigation database to be the only database on the USB drive (Not in a folder).



- **Tip *USB Conversion***
- USB 1.1 specification of 12 Mbps (released 1998)
- USB 2.0 specification of 480 Mbps (released 2000)
- USB 3.0 specification of 5 Gbps (released 2008)

- Before downloading your database, you will want to prepare your USB flash drive with the file folder(s) needed to keep your databases separate from each other. Name the folders so you can easily find which database you are looking for.
- Right click the open area on the right side of the windows explorer view of your flash drive. Hover the cursor over New and left click on Folder. Give the New Folder a unique name.



# EXTRACTING THE DATABASE

- The databases downloaded from Collins Aerospace will need to be uncompressed (extracted/unzipped) to a USB flash drive.
- Double click the “.exe” file to extract the data to the USB flash drive. Each database can be in its own folder.



- From your Web Browser, type in [www.rockwellcollins.com/fms](http://www.rockwellcollins.com/fms) this will take you to the Services and Support web site  
<http://www.rockwellcollins.com/Services and Support/Database and Software Updates/Navigation Databases.aspx>



Support > Database and Software Updates > Flight Deck Content

Commercial Aviation

Business Aviation

Defense & Government

Airports

Rail

Critical Infrastructure

## Flight Deck Content



### Database and Software Updates

#### Flight Deck Content

- Coverage Maps
- Database Alerts, Exclusions and Certifications
- Subscription Information
- Subscription Forms
- Simulation Software

To our valued pilots and directors of flight operations,

On Dec. 6, 2018, the Federal Aviation Administration (FAA) posted an Airworthiness Directive (AD) notice of proposed rulemaking (NPRM) for Pro Line 4 and 21-equipped operators equipped with FMS 3.3X through 4.X to address an issue that can occur when a "Climb To" altitude has been edited either manually or by using the Temperature Compensation (Temp Comp) feature. Collins Aerospace (Rockwell Collins) issued an Operators Service Bulletin (OPSB) 0166-17R5 about this FMS issue on July 25, 2018.

The NPRM is the official document that announces and explains the FAA's plan to address a problem or accomplish a goal. All proposed rules must be published in the Federal Register to notify the public and to give them an opportunity to submit comments. The proposed rule and the public comments received on it form the basis of the final rule. The NPRM is available [here](#) and will be open for public comment until Jan. 22, 2019. Collins Aerospace is drafting its own comments and will post prior to the deadline.

Since our initial notification regarding the Temp Comp issue, we have continued to work closely with the FAA exploring ways to retain the approximately 10,000 affected navigation procedures while minimizing the impact to operations and keeping you safe.

Moving forward, all previously re-instated procedures related to the Temp Comp issue will remain in place and operators will not be required to upgrade their FMS software. However, operators will need to continue to perform the FMS Temp Comp calculations manually, when necessary. To prevent the issue, operators must refrain from manually editing "Climb To" altitude on both departures and missed approaches.

### Customer support

When calling our support line, use this phone menu to help expedite your call.

[Log in or request an account](#)

[Download Database](#)  
*Account required*

Database and IFIS Subscription Questions  
Phone: 319-295-5000  
Fax: 319-295-8757  
[fmssubs@rockwellcollins.com](mailto:fmssubs@rockwellcollins.com)

Database Technical Support  
Phone: 319-295-5000  
[collinsdatabasetech@rockwellcollins.com](mailto:collinsdatabasetech@rockwellcollins.com)

### Maintenance Diagnostic Computer (MDC)

Download [Maintenance Diagnostic Computer \(MDC\)](#) tables and checklists, as well as updates regarding the product.  
*Account required*

### LPV Solutions

More than 3,000 precision approaches get you closer to your destination; saving fuel, saving time. [Learn more](#)

[LPV equipped airports](#)

### Resources

[Database Effectivity Schedule](#)  
[FAQ](#)

Links to database alerts and subscription forms have moved to the left navigation menu under Flight Deck Content.

Watch: Rockwell Collins



# Click on Download Databases



Home > Services & Support > Database and Software Updates > Flight Deck Content

## Service & Support

### Database & Software Updates

#### Flight Deck Content

Coverage Maps

Database Alerts and

Certifications

Subscription Forms

Subscription Information

Simulation Software

Field Support Services

Flight Information Solutions

Maintenance & Repair

Publications

## Database and Software Updates: Flight Deck Content



## Customer support

When calling our support line, use this phone menu to help expedite your call.

### Download Database

#### Database and IFIS Subscription Questions

Phone: 319-295-5000

Fax: 319-295-8757

Email

#### Database Technical Support

Phone: 319-295-5000

Email

- <https://profile.rockwellcollins.com/SSOLogin/Login.htm>
- Login with your User ID and Password you previously set up with the Collins Aerospace Database Subscriptions group.



---

Welcome to the Account Management Center.

To log in, enter your User ID and password.

\*Indicates Required Field

User ID (email address):

•

Password:

•


Log in

[Create new account](#) | [Forgot password?](#) | [Help](#)



Browser window: <https://www3.rockwellcollins.com> FMS Database Service

Welcome, Frank Gutierrez [Log Out](#) [Change Password](#)



Building trust every day [rockwellcollins.com](http://rockwellcollins.com)

Here are the databases you are eligible to download:

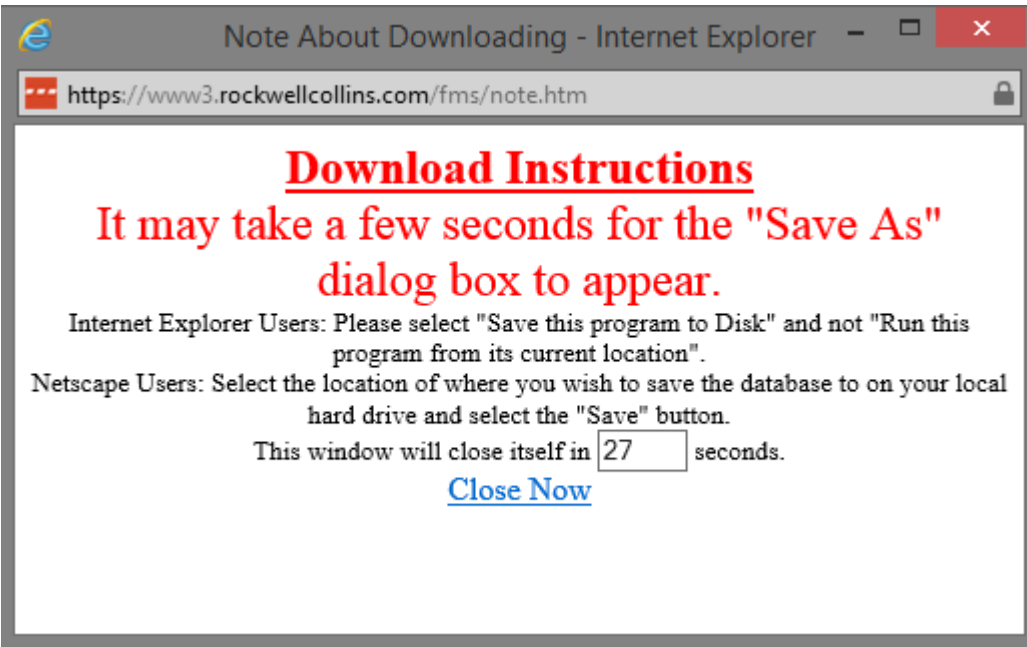
## Rockwell Collins - Internal ONLY

Click one of the following databases to download it:

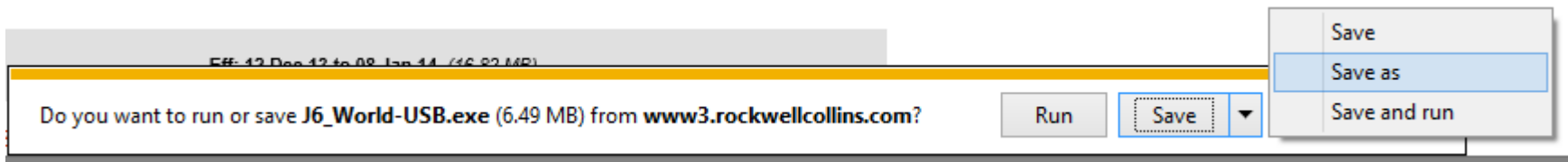
<b>GPS Predictor</b>	Release 831-4894-009 (4.13 MB)
<b>GPS Predictor NavDb</b>	Eff: 12 Dec 13 to 08 Jan 14 (7.25 MB)
<b>GPS Predictor NavDb LSY</b>	Eff: 12 Dec 13 to 08 Jan 14 (7.97 MB)
<b>IFIS DL GWx</b>	Release 10 - EFF: 13 May 13 to 31 Dec 14 (307 KB)
<b>IFIS E-Maps-USB</b>	Eff: 14 Nov 13 to 11 Dec 13 AND 12 Dec 13 to 08 Jan 14 (8.94 MB)
<b>IFIS XM GWx-USB</b>	Release 10 - EFF: 08 Apr 13 to 31 Dec 14 (328 KB)
<b>J6 World-USB</b>	Eff: 14 Nov 13 to 11 Dec 13 AND 12 Dec 13 to 08 Jan 14 (6.81 MB)

Download the databases for your aircraft. The available databases will vary depending on type of aircraft and avionics installed.

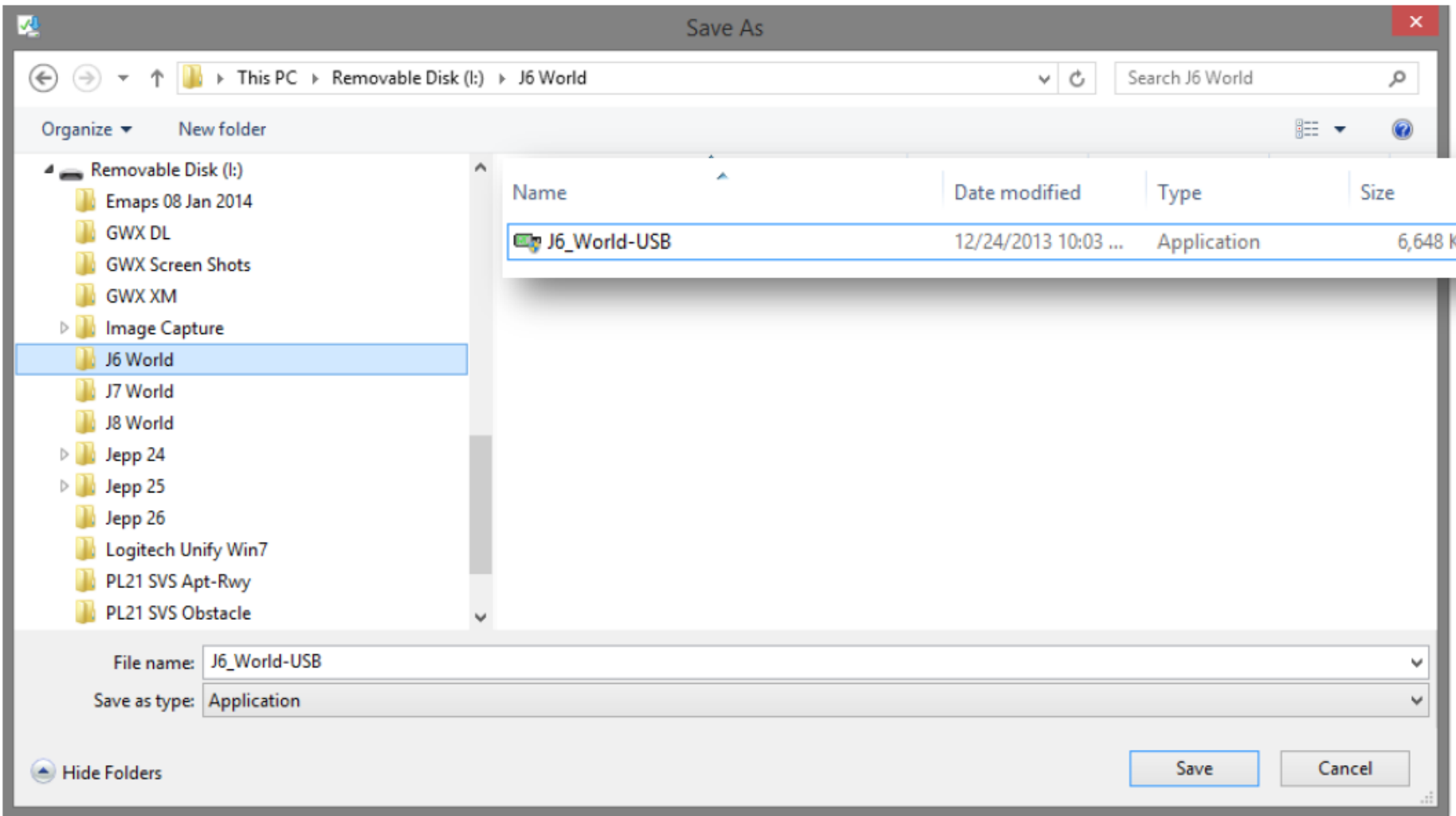


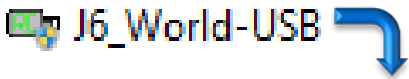


Save the file to your USB flash drive or computer hard drive. Use the Save as feature so you know the location such as the desktop or a folder of your choice.

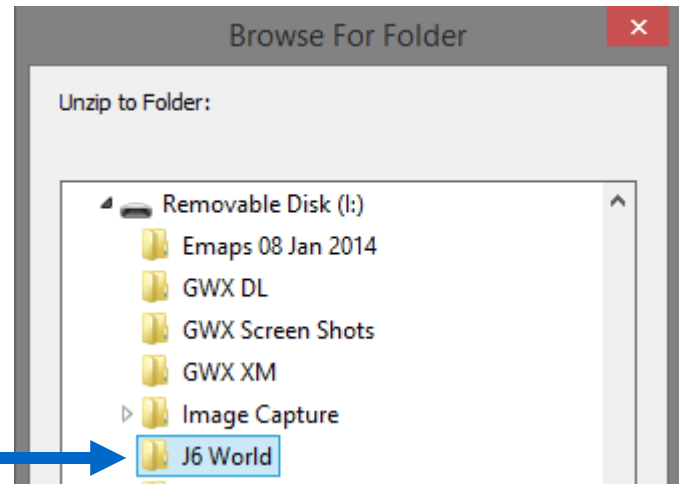
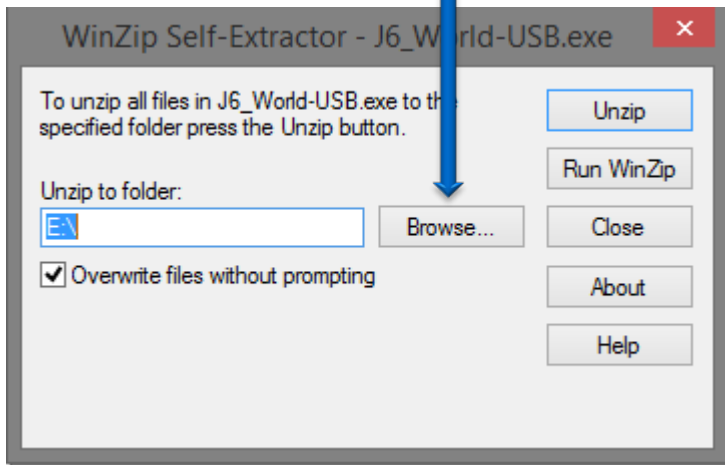
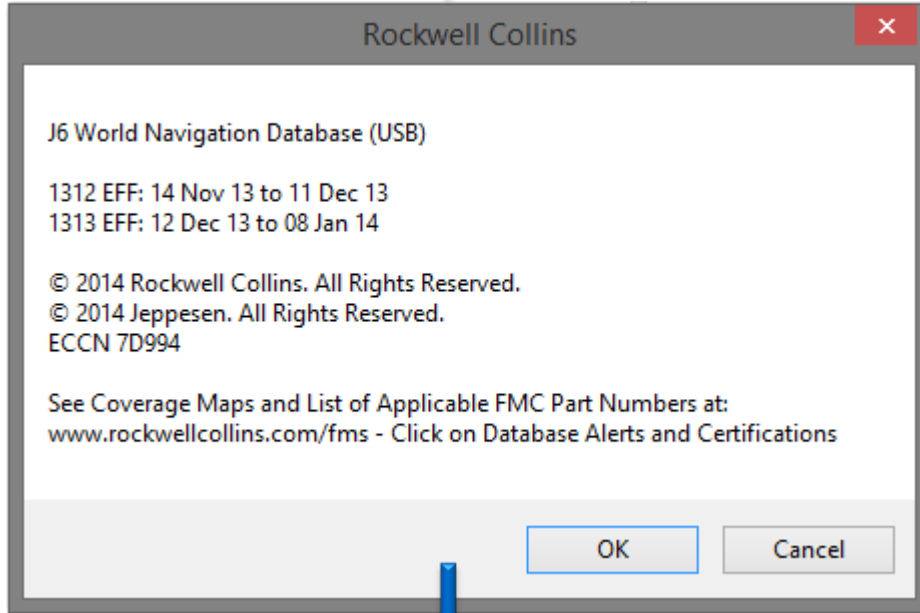


Save the file to your USB flash drive where you created the new folder.

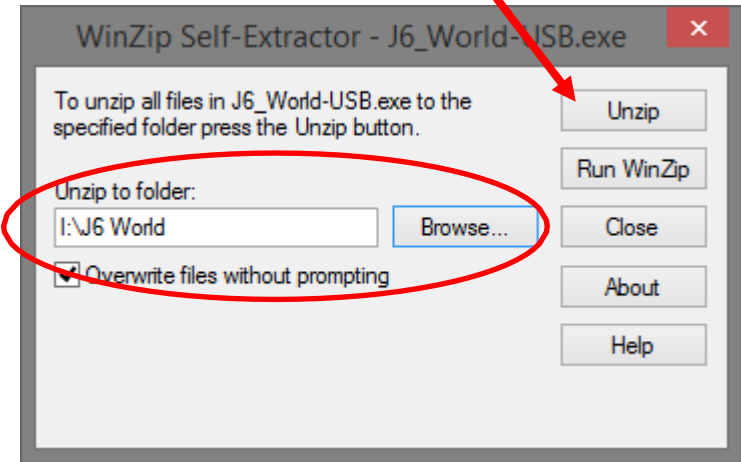




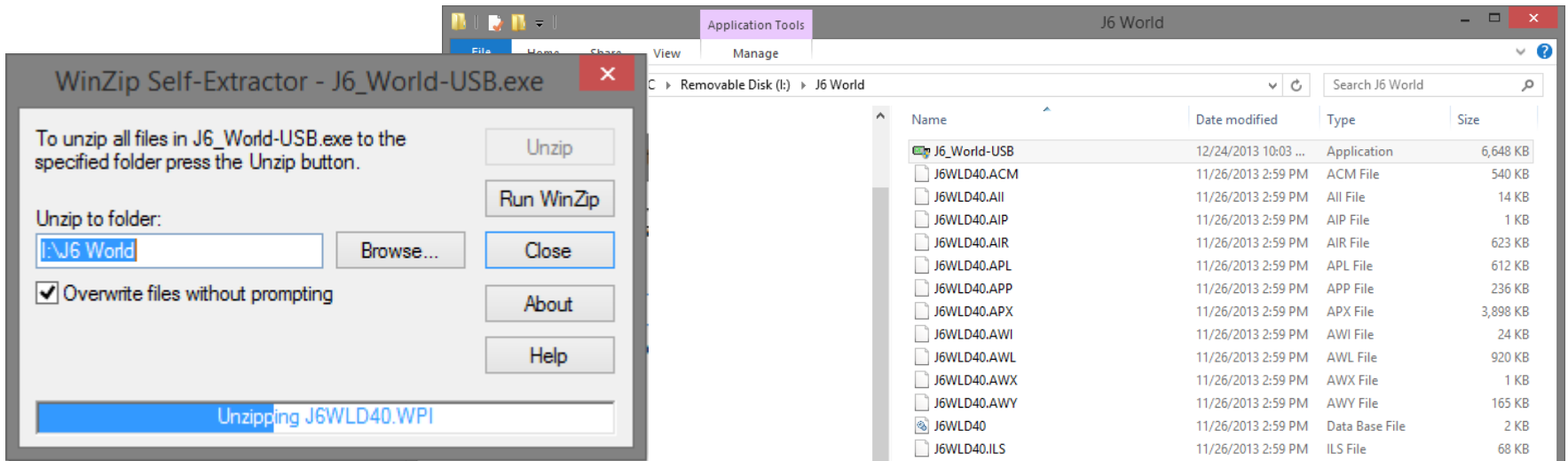
Run the file by double clicking it.



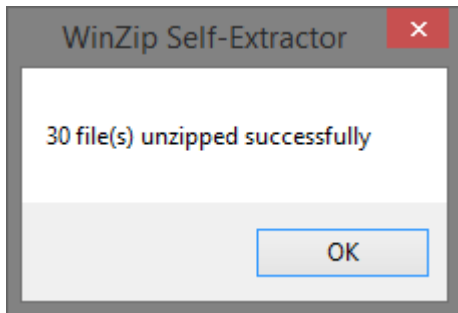
After browsing to the folder where the files will be stored, click the Unzip button.



With Windows Explorer open to the directory you created on your USB drive you can see the files unzip to the folder assuring you the files are extracting to the correct location.



After the progress bar has finished, a pop up window will prompt when finished.



For more information, visit  
[rockwellcollins.com](https://rockwellcollins.com)  
or call 319-295-5000