



CPAS-3000 Data Loader

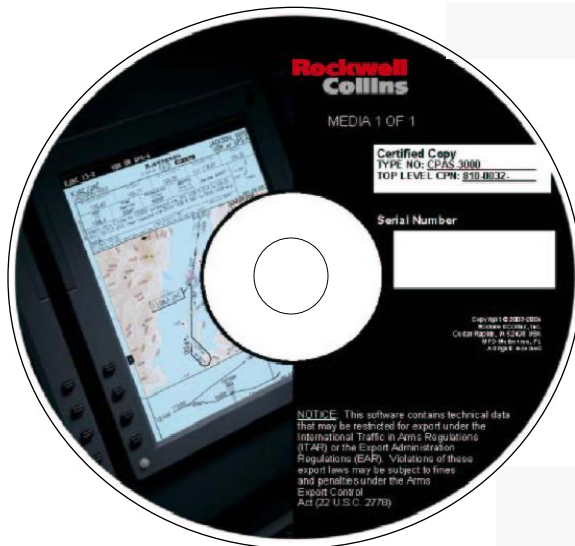
February 22, 2016
Frank Gutierrez

Collins Portable Access Software CPAS-3000 Version 2.7 Set-up for Microsoft Windows Operating System



Aircraft w/ File Server Unit (FSU)

- FSU Requires use of Collins Portable Access Software (CPAS) and user provided laptop PC



Collins Portable Access Software
(CPAS) CPN 810-0032-001



Aircraft w/ FSU

- CPAS connects the laptop PC to the FSU Ethernet connection and the aircraft RJ45 connector.

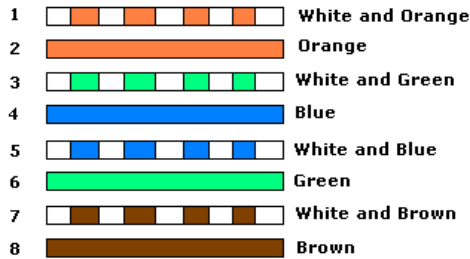
The following cable description is for the wiring of both ends (RJ45 Male connectors) with the 568B category 5(e)

Note: Most aircraft use the standard 568B category 5(e) cable.

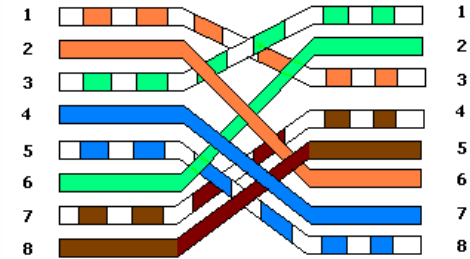
Crossed cables are sometimes called Crossover, Patch or Jumper cables.

Note: Use the Crossover cable for production Hawker Beechcraft (HBC) aircraft. HBC Aircraft that are an IFIS retrofit may use the standard cable.

TIA/EIA 568B Wiring

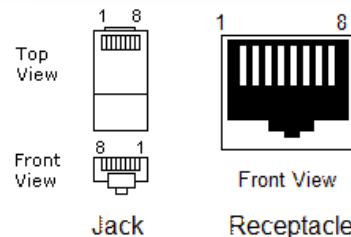


TIA/EIA 568B Crossed Wiring



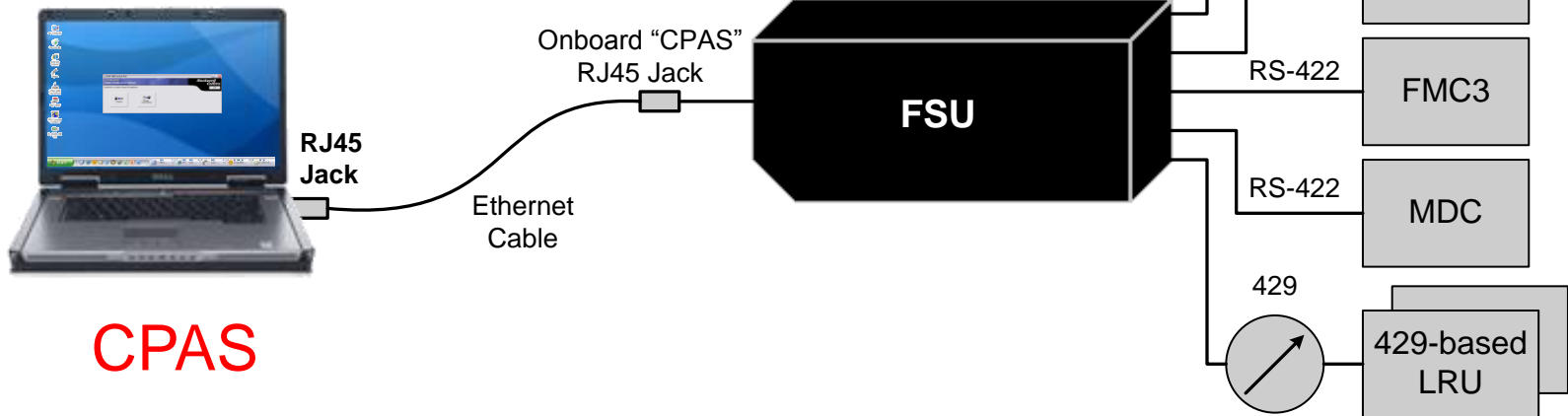
Pin No.	strand color	Name
1	white and orange	TX+
2	orange	TX-
3	white and green	RX+
4	NC	*
5	NC	*
6	green	RX-
7	NC	*
8	NC	*

One end RJ45 Male	Other end RJ45 Male
1 TX+	3 RX+
2 TX-	6 RX-
3 RX+	1 TX+
4 * NC	5 * NC
5 * NC	4 * NC
6 RX-	2 TX-
7 * NC	8 * NC
8 * NC	7 * NC



Aircraft with the FSU

CPAS uses the FSU unit as a means to load other equipment.



Computer Compatibility

Most notebook computers and network cards are compatible with CPAS.

Note: It is possible to have a computer network card or operating system that is not set up to run CPAS successfully. Rockwell Collins does not have control over third party hardware and software compatibility. Instructions for manually setting up the network card is at the end of this presentation.



Computer Compatibility



Even the little computers with 10” screens or tablet PC’s that run the Windows operating system and has a RJ45 Ethernet connector should work with CPAS.

Note: To work properly, you may need to change the 615A parameters and controls “Block Size” to 512.

BLOCK SIZE (BYTES): This value specifies the largest block size that a load operation will accept or reject. The default value is 32,768 bytes.

See the CPAS-3000 operator guide, program operation (V2.6 CPN 523-0790386 or V2.7 CPN 523-0810629 for more information.

Computer Compatibility



This is not a supported configuration but has proven to work.

MacBook Pro with Dual boot using the “Boot Camp” partition and Windows operating system.

Note 1: Boot Camp enables you to install Windows on the Intel-based Mac computer, using a Microsoft Windows install disc that you provide.

Note 2: Under CPAS Configuration/Network tab, uncheck the “Restore Original Adapter Parameters on Exit” box. If this isn’t accomplished you will get an “Unable to restore the original adapter settings error.”

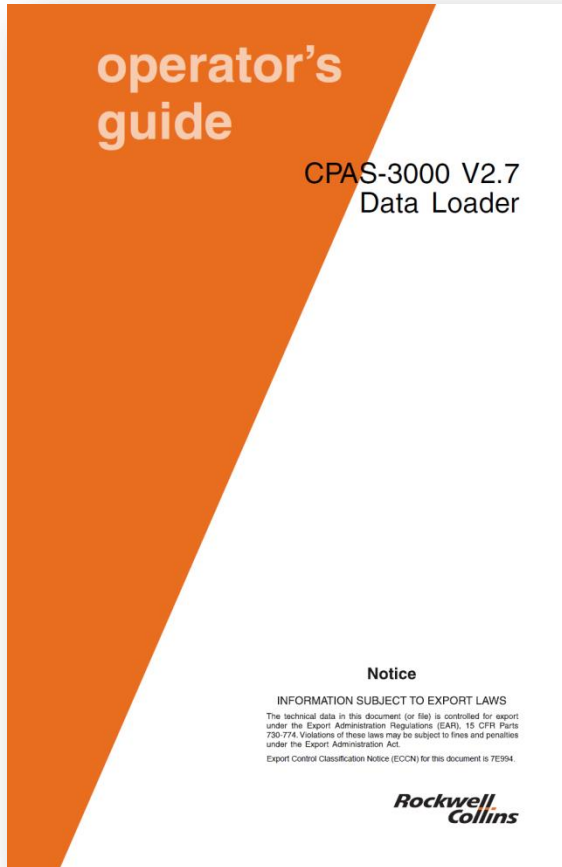
Databases

- CPAS is used to upload databases to LRUs such as:
 - FSU (Charts & Maps)
 - FMC (FMS Database)
 - MDC (checklists and tables)
 - 429-Based LRUs Use ARINC 615-3 Protocol Over ARINC 429



Collins Portable Access Software
(CPAS) CPN 810-0032-001

CPAS-3000 V2.7



523-0810629

523-0807061

**Rockwell
Collins**

523-0807061-201000

CPAS-3000 DATA LOADER

Service Information Letter 1-04
REVISION NO. 2

SIMPLIFICATION OF CPAS-3000 COMPUTER SETUP

TRANSMITTAL INFORMATION SUMMARY

Summary

This is revision 2 of SIL 1-04 for the CPAS-3000 Data Loader.
 This revision informs Rockwell Collins, Inc. CPAS-3000 users that V2.7 is available.
 This revision also updates the format and content to current publications standards.
 Black bars in the margins indicate the changes.
 Replace revision 1 with this revision.

Service Information Letter Revision History

REVISION	DATE OF RELEASE
Initial Release	February 9, 2005
Revision 1	August 16, 2005
Revision 2	March 26, 2006

Notice
 INFORMATION SUBJECT TO EXPORT LAWS
 The technical data in this document (or file) is controlled for export under the Export Administration Regulations (EAR), 15 CFR Parts 730-774. Violations of these laws may be subject to fines and penalties under the Export Administration Act.
 Export Control Classification Notice (ECCN) for this document is 7E994.

© Copyright, 2006 Rockwell Collins, Inc., All rights reserved

Feb 9/05
2-Mar 26/08

CPAS-3000-1-04
Page 1 of 4

CPAS-3000 V2.7 Updates

- New CPAS installation software.
- Works with Windows Vista and Windows 7 operating systems.
- Adds ARINC 429 NDOs for ARINC 615-3 data loads.
- Fix for importing FMS type 7 Navigation databases into CPAS,
- Detect if virus detection software is running.
- Automatically identify and selects LAN adapters.
- Provides a help feature on how to disable wireless LAN adapters.
- “Sort by date” and “sort by name” feature in the Manage Data/Software Window.
- Improved data load progress indications.
- Pre-operation/preparations checklist feature, cockpit effect “pop-up”, and data load session conclusion advisories “pop-up”.
- Improvements of data load page items nomenclature.

CPAS-3000 V2.7 Updates

- Redefined graphics for data load and manage data software.
- CTRL+Select feature in Manage Software /Data window.
- Directory location selection window prior to the importation window to alleviate occasional “hang-up” prior to importation.
- Changed file-transfer-in-process graphics.
- Add a “Refresh Window” button to the Manage Data/Software window.
- Re-arranged data loader page buttons.
- Eliminated ghost FMS3 target from list on data loader page.
- Changed default settings on data load page close page on completion setting to “ON”.
- Reordered the data load progress indicators on the data load page.
- Released first week of May 2008.

CPAS-3000 Version 2.7 Setup




Rules for Setting up Computer

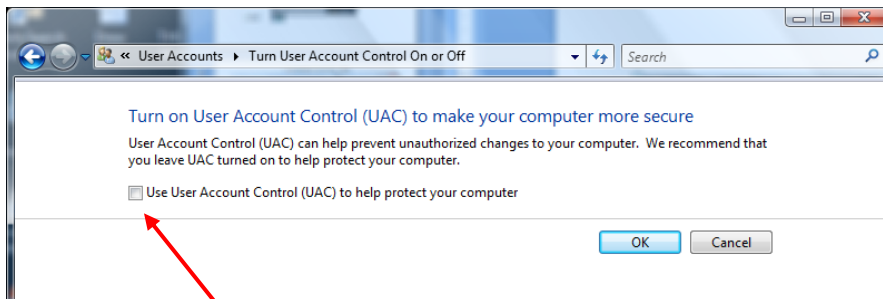
- Must have administrator rights on the computer.
- All spyware/virus protection and firewalls should be turned off prior to installation.
- Turn off the User Account Control in Microsoft Vista, Windows 7 & Windows 8.X prior to installation.

User Accounts Control

Vista

1. Start Button 
2. Control Panel
3. User Accounts and Family Safety
4. User Accounts
5. Turn User Account Control on or off

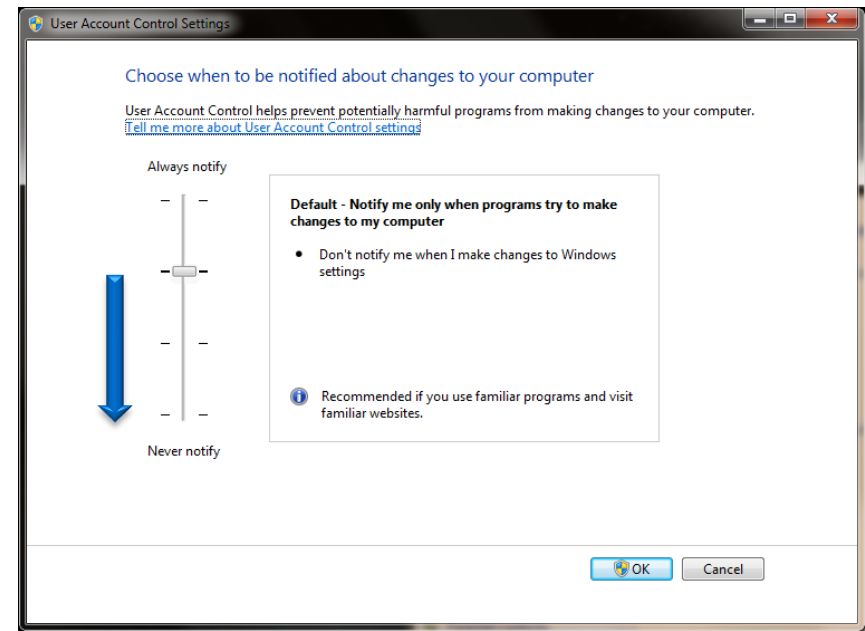
Windows need your permission to continue Click the continue button.



6. Uncheck (UAC) box..... click OK

Windows 7

1. Start Button 
2. Control Panel
3. User Accounts and Family Safety
4. User Accounts
5. Change User Account Control settings
6. { Set slider to "Never notify"}... click OK

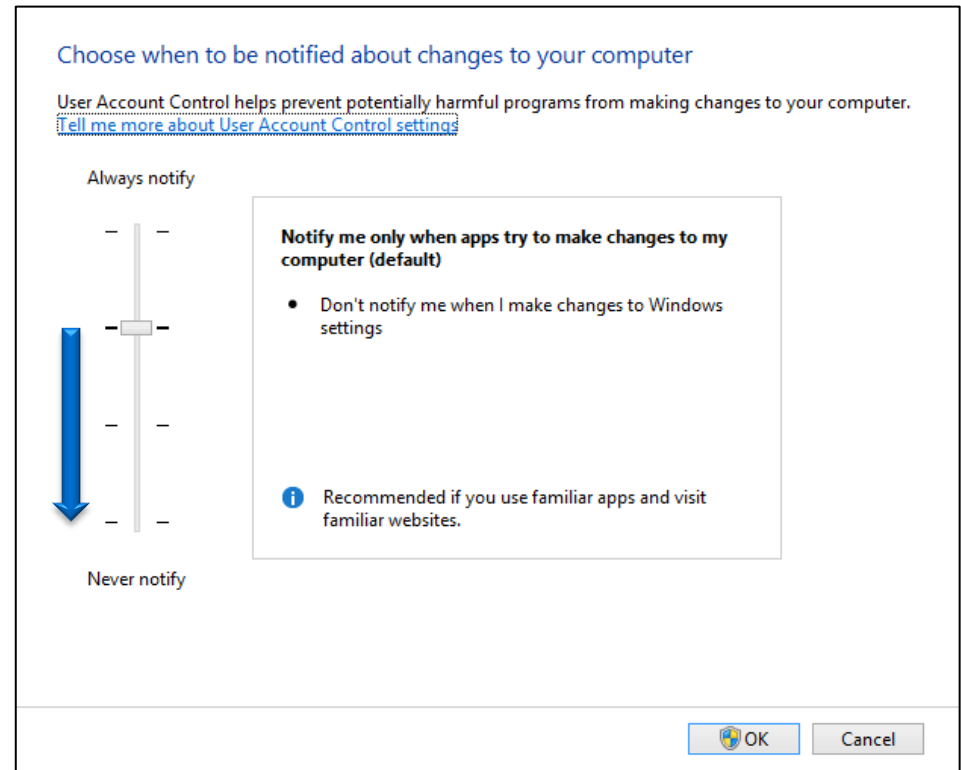
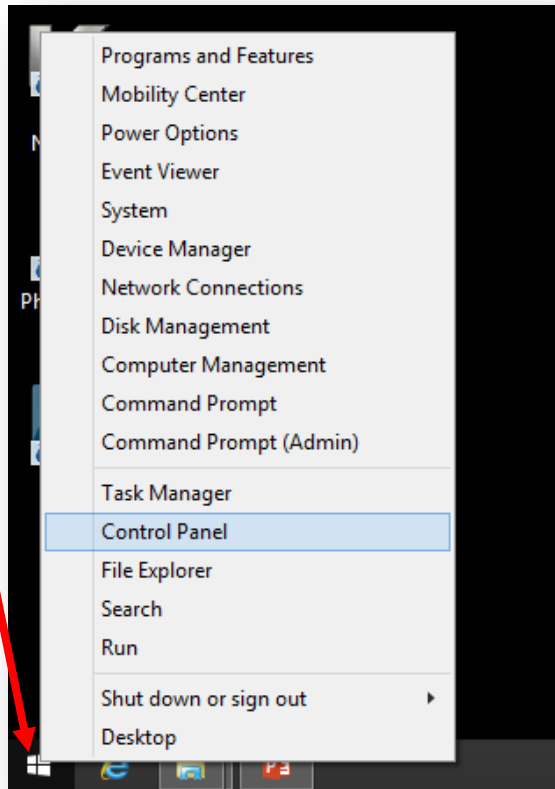


User Accounts Control

Windows 8.1 or 10 not supported


Right mouse click on the windows icon, then left click on the Control Panel option.

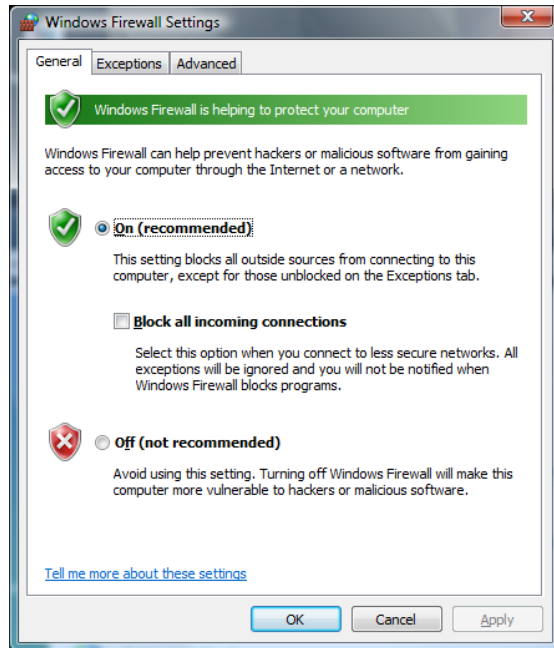
1. Start Button (right click)
2. Control Panel
3. User Accounts and Family Safety
4. User Accounts
5. Change User Account Control settings
6. { Set slider to "Never notify"}... click OK



Windows Firewall

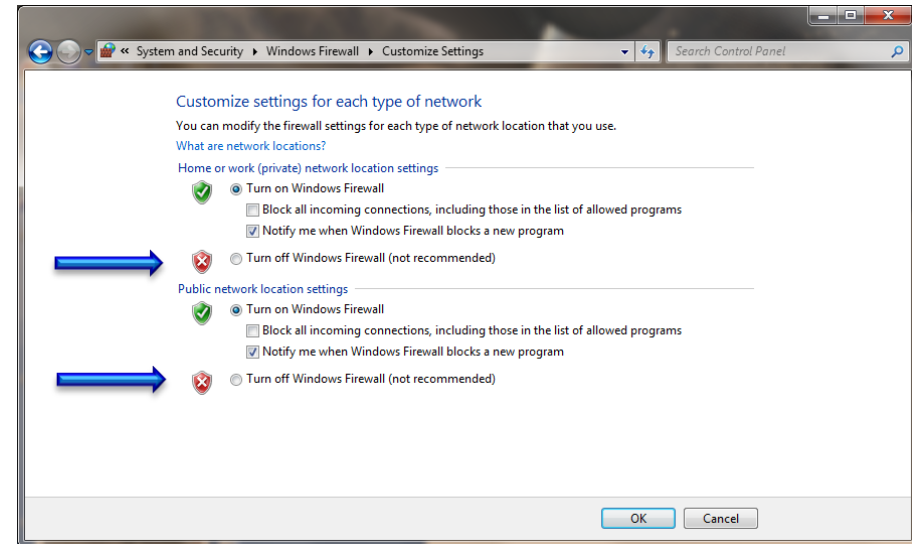
Vista

1. Start Button 
2. Control Panel
3. Security
4. Windows Firewall
- ↳ a. Turn Windows Firewall on or off



Windows 7

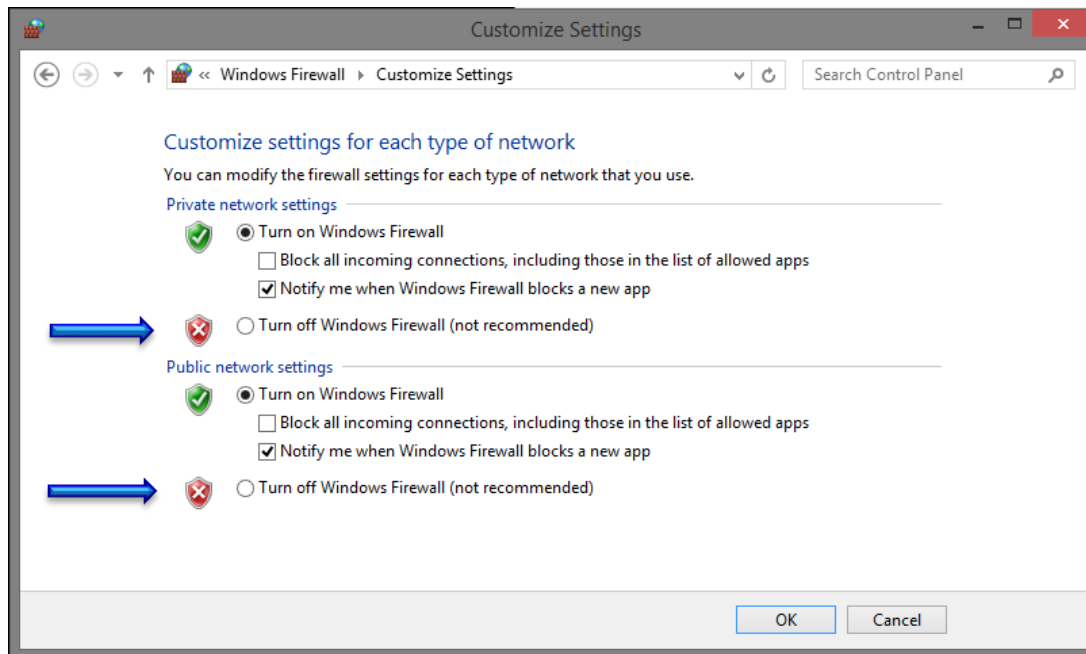
1. Start Button 
2. Control Panel
3. System and Security
4. Windows Firewall
5. Turn Windows Firewall on or off
6. Set private and public network off.....click OK



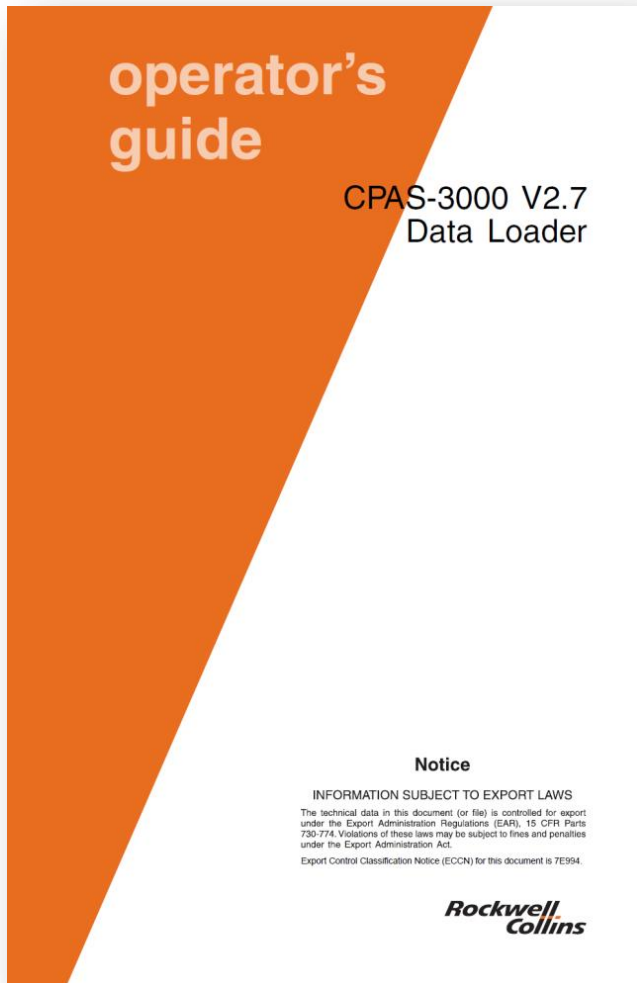
Windows Firewall

Windows 8.1 or 10 not supported

1. Start Button (right click)
2. Control Panel
3. System and Security
4. Windows Firewall
5. Turn Windows Firewall on or off
6. Set private and public network settings off.....click OK



Loading and Running CPAS



After setting up your Windows Operating system, Load CPAS-3000 on your notebook computer by following the instructions in the operator guide.
(CPN 523-0810629)

Preparing the Data for CPAS-3000

1. Verify the databases that are required and their effective dates.
2. Download Data from the Rockwell Collins fms database website for the FMS. These may include:
 - a. Performance Database
 - b. Vspeed Database
 - c. Navigation Database
3. Download Data from the Rockwell Collins fms database website for the FMS & FSU. FSU databases may include:
 - a. IFIS E-maps
 - Airspace & Airways (VOR / Victor Airways and Jet Routs)
 - Overlays (maps graphical weather data)
 - Geopolitical (Boundaries for states and some large bodies of water)
 - b. IFIS XM GWx (graphical weather) or
 - c. IFIS Datalink GWx (IFIS Universal GWx)

FSU Databases Info

FSU Database	Update Cycle	Load Time w/ CPAS	Comments
Electronic Charts	14 Days	8-10 mins	Distributed by Jeppesen
Enhanced Maps	28 Days	3-4 mins	Contains Airways, Airspace and Geopolitical Data
Graphical Weather	1 Year	3-4 mins	Contains Geopolitical Overlays

FMC Databases Info

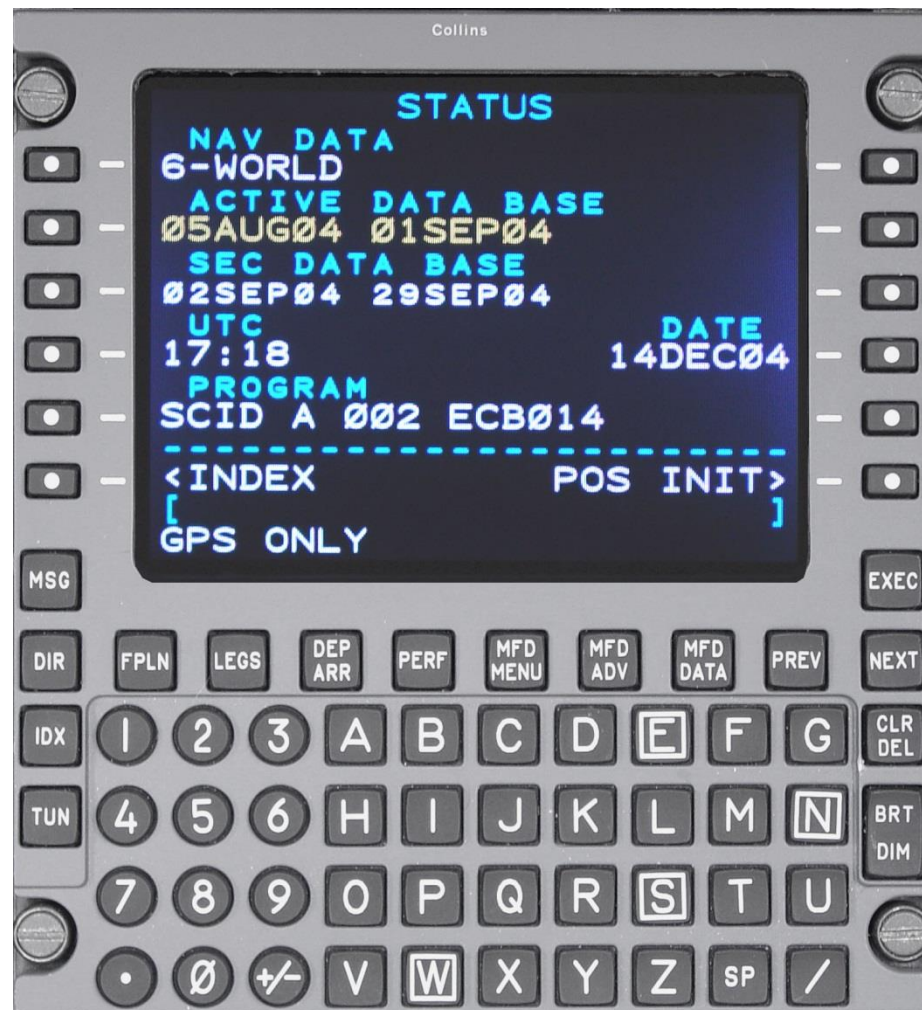
FMC Database	Update Cycle	Load Time w/ CPAS	Comments
Nav	28 Days	25-30 mins	For World Database
Performance. or VSPEEDS	On Demand	4-6 mins	Depends on Size of Database
Routes or Waypoints	On Demand	> 1 min	Depends on Size of Database

MDC Databases Info

MDC Database	Update Cycle	Load Time w/ CPAS	Comments
Diagnostic Tables (MDC 3100 & 4100 series)	On Demand	10-15 mins	Depends on Size of Tables
Checklists	On Demand	4-6 mins	Depends on Size of Checklists

Checking FMS Database Status

- FMS STATUS page indicates the status of the 28 day data bases dates.
- When the database is out of date, a new databases will need to be uploaded before the FMS should be used.



DATABASE EFFECTIVITY (AFD-3010E)

The DATABASE EFFECTIVITY page provides the aircraft operator with a means to assess if the installed databases are current.

RESERVED

DATABASE EFFECTIVITY

DATABASE	BEGIN	END	STATUS
FMS 1 NAV	01 MAY 01	01 JUN 01	NOT CURRENT
CHARTS	01 JUN 01	01 JUL 01	CURRENT
AIRSPACE	15 APR 01	15 MAY 01	NOT CURRENT
AIRWAYS	05 APR 01	05 AUG 01	CURRENT
GEOGRAPHIC	10 APR 01	10 DEC 01	CURRENT
POLITICAL	01 JAN 01	01 SEP 01	CURRENT
GRAPHICAL WX	01 MAY 01	N/A	CURRENT

CHARTS

DATABASE NAME: 25 CHARACTER NAME

COVERAGE REGIONS: 25 CHARACTER MAXIMUM
12 REGION MAXIMUM
CARRIBEAN
CANADA
UNITED KINGDOM
REGION LINE 6
REGION LINE 7
REGION LINE 8
REGION LINE 9
SEE SUBSCRIPTIONS PAGE

DATE 23 JUN 01

UTC DATE

EFFECTIVITY BEGIN DATE

DATABASE STATUS

EFFECTIVITY END DATE

DETAILS BOX

DATA FIELDS

MENU CURSOR

DATABASE EFFECTIVITY DATA

CURSOR CONTROL PANEL (CCP-3000)

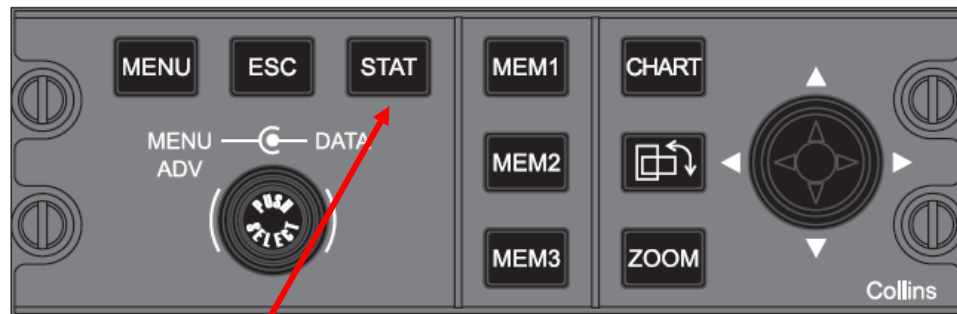
The Cursor Control Panel (CCP-3000) provides controls for the IFIS formats.

The STAT button may be labeled DATABASE, depending on the installation.

Push the STAT button on the CCP to display the STAT MENU on the MFD.

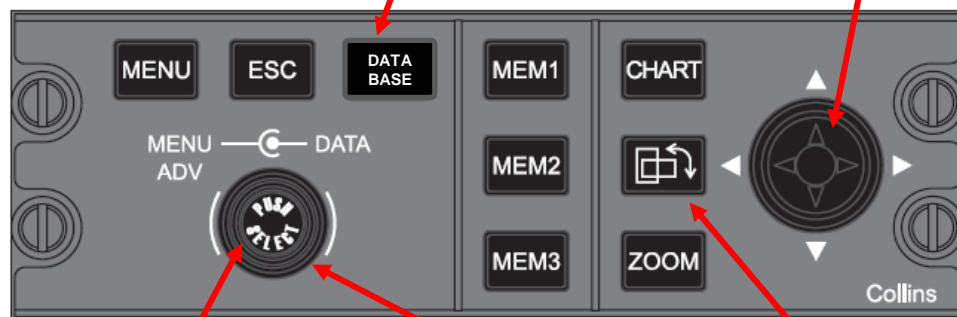
Turn the MENU ADV knob until the cursor is on the DATABASE EFFECTIVITY list item.

Push the PUSH SELECT button on the CCP to select the DATABASE EFFECTIVITY page.



STAT / DATABASE BUTTON

JOYSTICK



PUSH SELECT PUSH
BUTTON

MENU ADV
KNOB

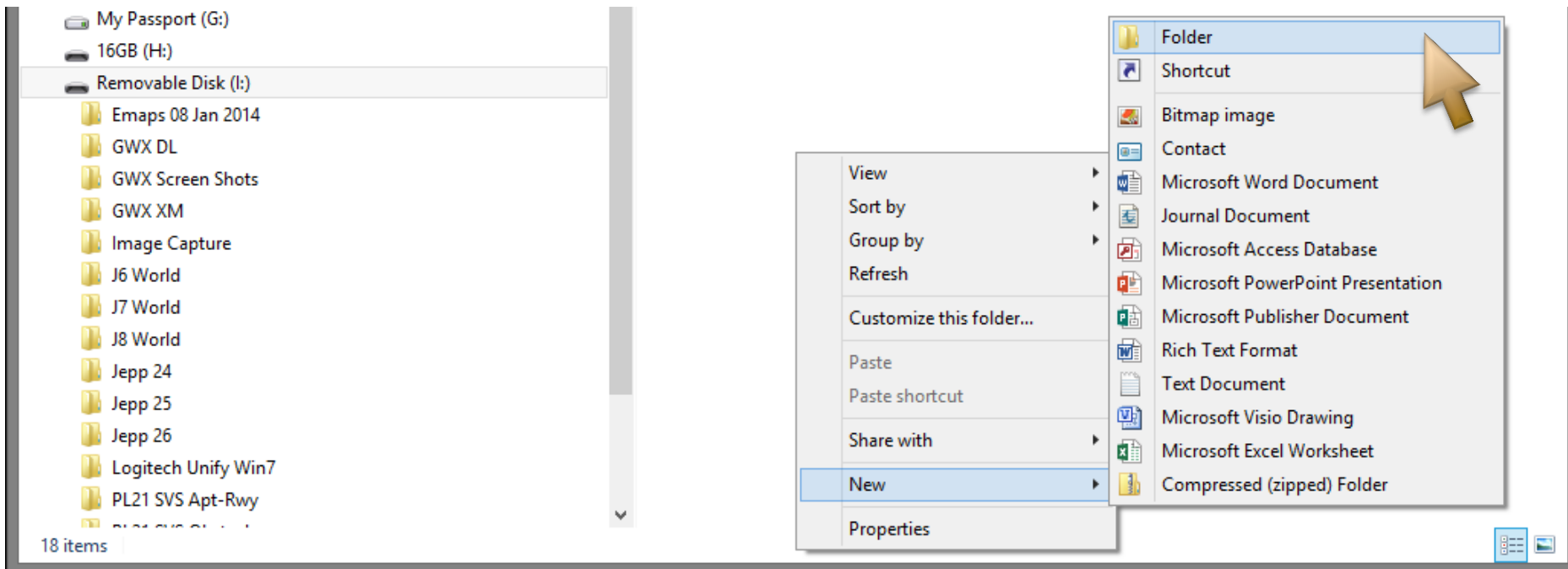
ORIENTATION
BUTTON



Downloading The Database from Rockwell Collins Web Portal.

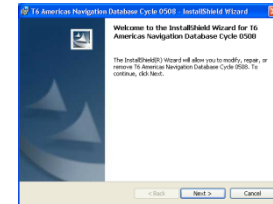
Before downloading your database, you will want to prepare your USB flash drive with the file folder(s) needed to keep your databases separate from each other. Name the folders so you can easily find which database you are looking for.

Right click the open area on the right side of the windows explorer view of your flash drive. Hover the cursor over New and left click on Folder. Give the New Folder a unique name.



Extracting the Database

- The databases downloaded from Rockwell Collins will need to be uncompressed (extracted/unzipped) to a USB flash drive.
- Double click the .EXE file to extract the data to the USB flash drive. Each database can be in its own folder.
- Import the database into CPAS using the Manage Data/Software button.



From your Web Browser, type in www.rockwellcollins.com/fms this will take you to the Services and Support web site
http://www.rockwellcollins.com/Services_and_Support/Database_and_Software_Updates/Navigation_Databases.aspx

Rockwell Collins
Building trust every day

Home > Services & Support > Database and Software Updates > Flight Deck Content

Service & Support

- [Database & Software Updates](#)
 - [Flight Deck Content](#)
 - [Coverage Maps](#)
 - [Database Alerts and Certifications](#)
 - [Subscription Forms](#)
 - [Subscription Information](#)
- [Simulation Software](#)
- [Field Support Services](#)
- [Flight Information Solutions](#)
- [Maintenance & Repair](#)
- [Publications](#)
- [Spares & Parts](#)
- [Tailored Services](#)
- [Training](#)
- [Upgrades and Enhancements](#)

Database and Software Updates: Flight Deck Content

DRIVERS

Airbus EFB Class2 Drivers
Download EFB drivers for the Airbus A320/A350 aircraft.
[810-0367-001](#) | [Release Notes](#)

NAVIGATION DATABASE NOTIFICATIONS

Available as a download from our worldwide FMS database services site, the updates are conveniently available prior to effective date, allowing you flexibility for data loading.

Notice

Customer support
When calling our support line, use this [phone menu](#) to help expedite your call.

Download Database

Database and IFIS Subscription Questions
Phone: 319-295-5000
Fax: 319-295-8757
[Email](#)

Database Technical Support
Phone: 319-295-5000
[Email](#)

Maintenance Diagnostic Computer (MDC)
Download [Maintenance Diagnostic Computer \(MDC\)](#) tables and checklists, as well as updates regarding the product. *Account required*

LPV Solutions
More than 3,000 precision approaches get you closer to your destination, saving fuel, saving

Click on [Download Databases](#)

Home | Products & Systems | **Services & Support** | Capabilities & Markets | Our Company | Contact Us | Log In

[Home](#) > [Services & Support](#) > [Database and Software Updates](#) > [Flight Deck Content](#)

Service & Support

[Database & Software Updates](#)

[Flight Deck Content](#)

- [Coverage Maps](#)
- [Database Alerts and Certifications](#)
- [Subscription Forms](#)
- [Subscription Information](#)

[Simulation Software](#)


[Field Support Services](#)

[Flight Information Solutions](#)

[Maintenance & Repair](#)

[Publications](#)

Database and Software Updates: Flight Deck Content



Customer support

When calling our support line, use this [phone menu](#) to help expedite your call.

[Download Database](#)

Database and IFIS Subscription Questions

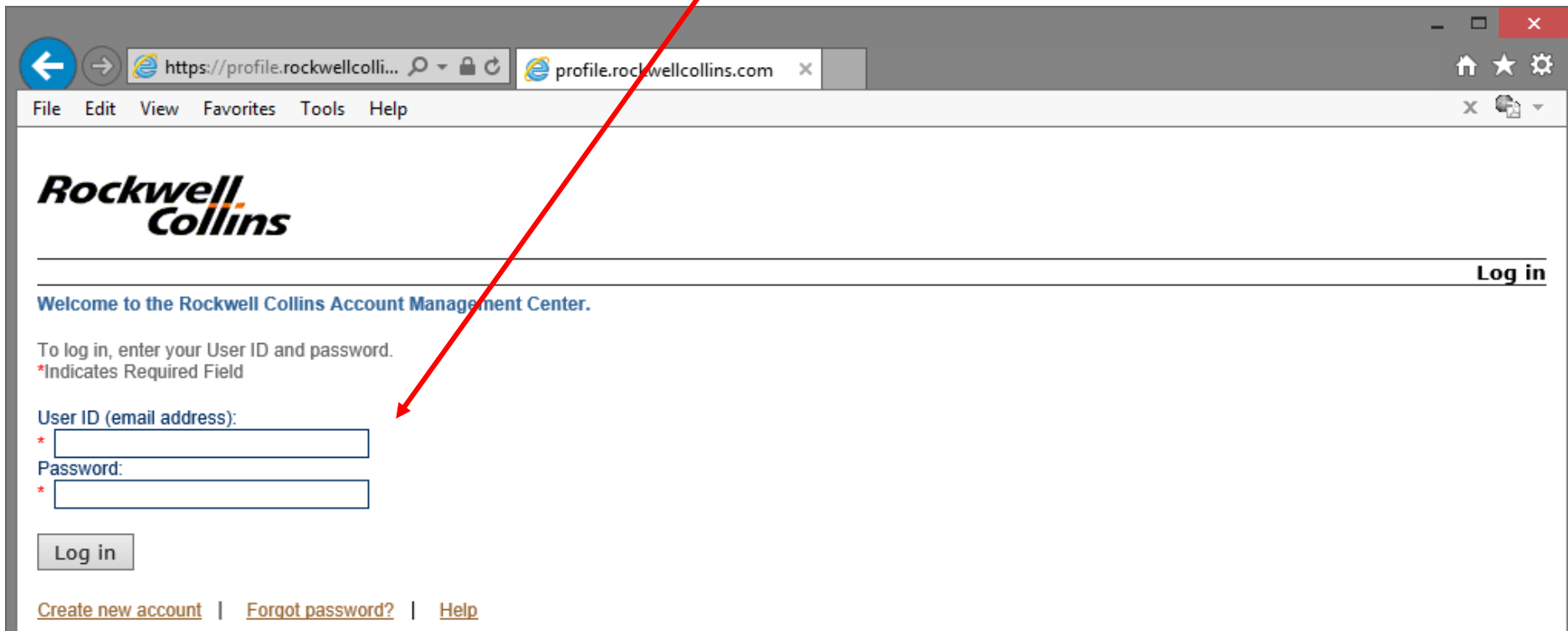
Phone: 319-295-5000
Fax: 319-295-8757
[Email](#)

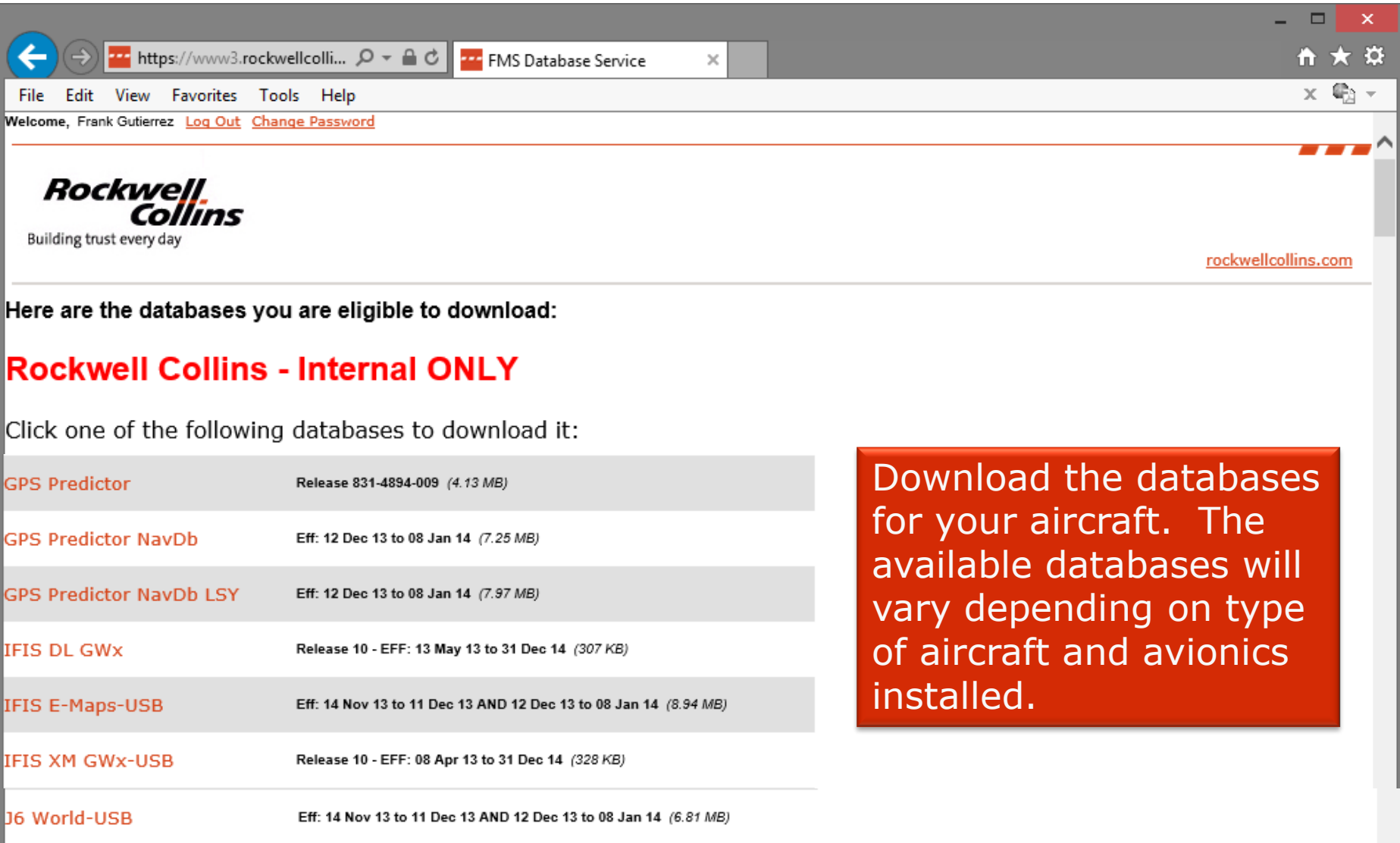
Database Technical Support

Phone: 319-295-5000
[Email](#)

<https://profile.rockwellcollins.com/SSOLogin/Login.htm>

Login with your User ID and Password you previously set up with the Rockwell Collins Database Subscriptions group.





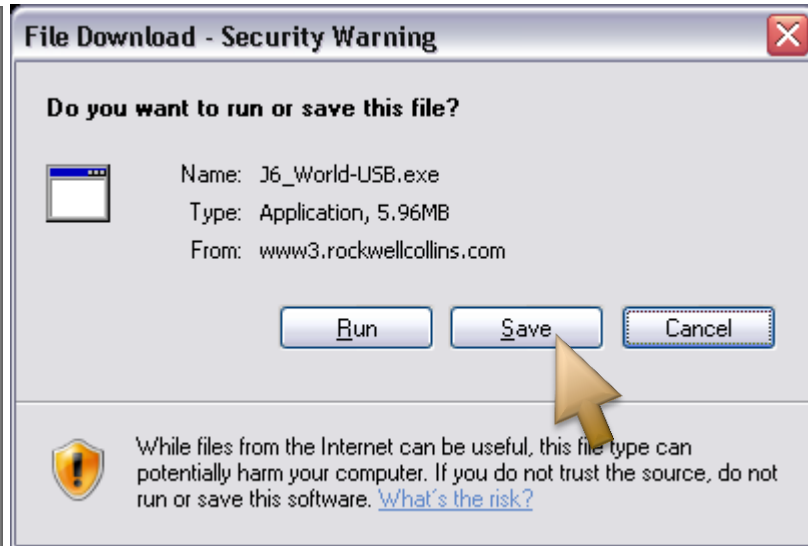
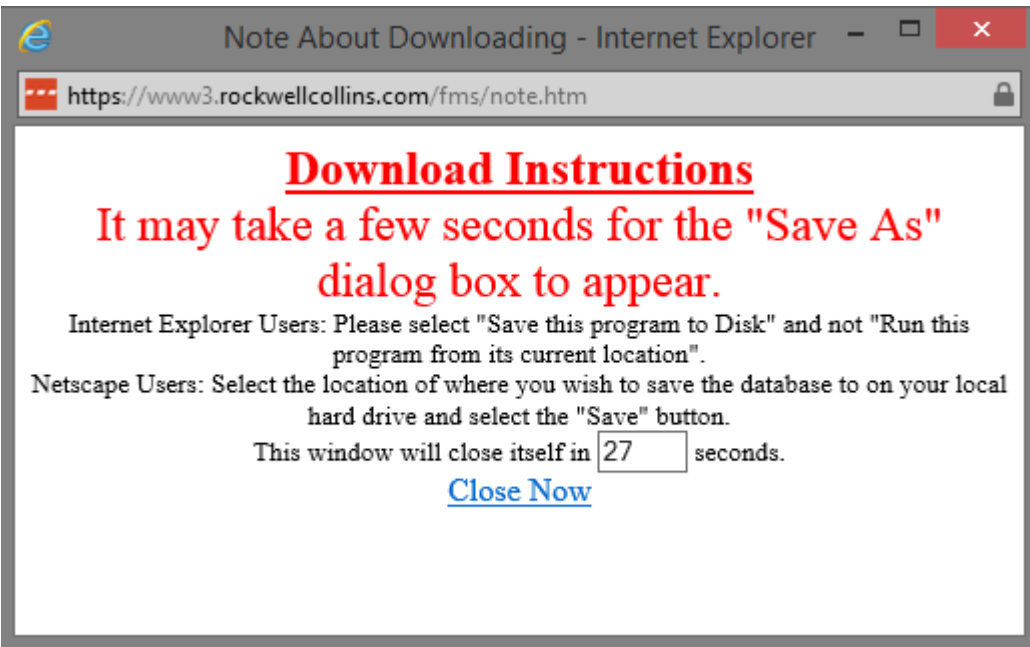
Here are the databases you are eligible to download:

Rockwell Collins - Internal ONLY

Click one of the following databases to download it:

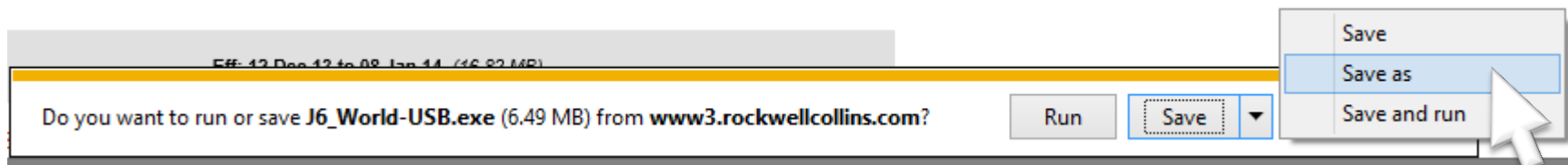
GPS Predictor	Release 831-4894-009 (4.13 MB)
GPS Predictor NavDb	Eff: 12 Dec 13 to 08 Jan 14 (7.25 MB)
GPS Predictor NavDb LSY	Eff: 12 Dec 13 to 08 Jan 14 (7.97 MB)
IFIS DL GWx	Release 10 - EFF: 13 May 13 to 31 Dec 14 (307 KB)
IFIS E-Maps-USB	Eff: 14 Nov 13 to 11 Dec 13 AND 12 Dec 13 to 08 Jan 14 (8.94 MB)
IFIS XM GWx-USB	Release 10 - EFF: 08 Apr 13 to 31 Dec 14 (328 KB)
J6 World-USB	Eff: 14 Nov 13 to 11 Dec 13 AND 12 Dec 13 to 08 Jan 14 (6.81 MB)

Download the databases for your aircraft. The available databases will vary depending on type of aircraft and avionics installed.



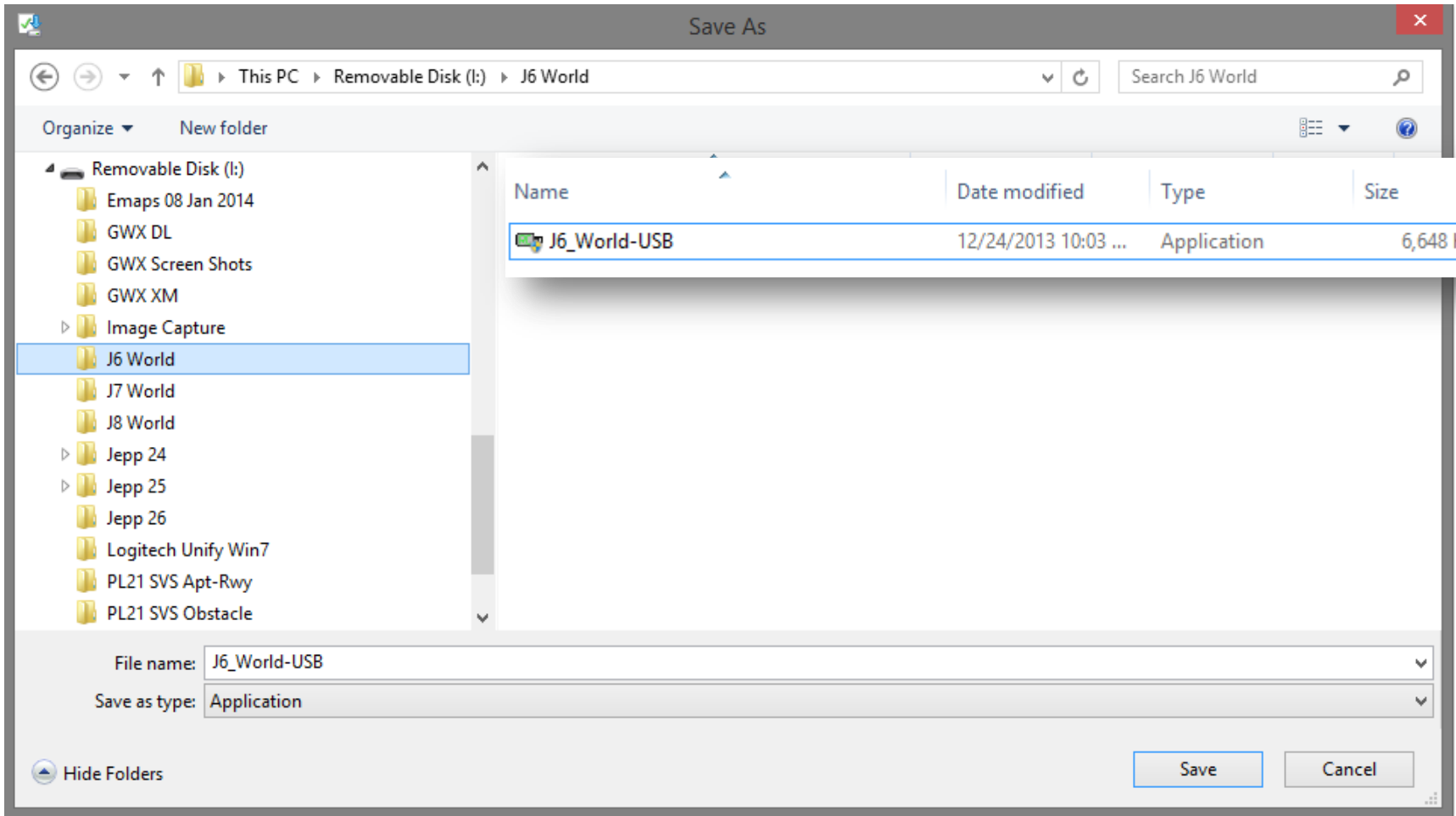
Windows 95, 98 & XP

Save the file to your USB flash drive or computer hard drive. Use the Save as feature so you know the location such as the desktop or a folder of your choice.

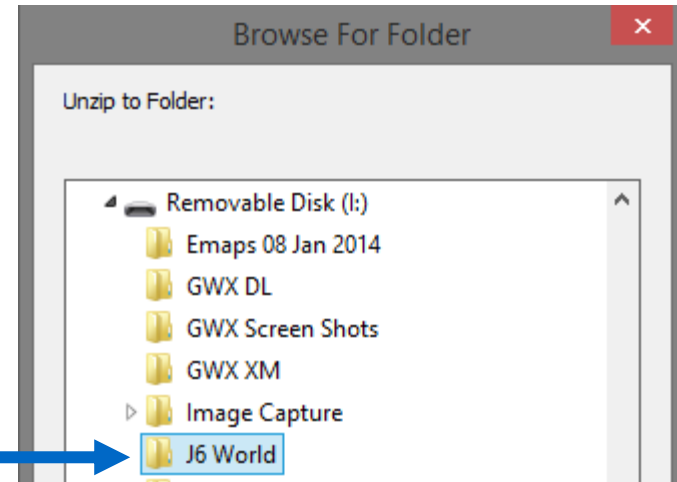
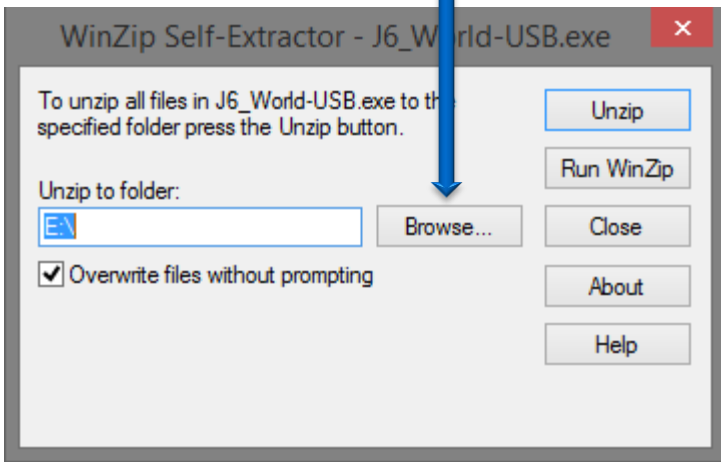
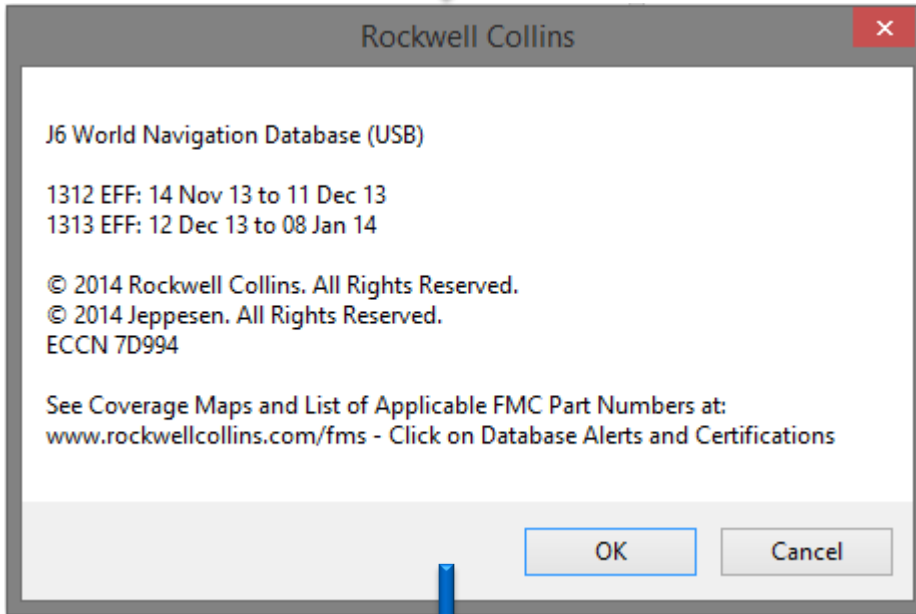
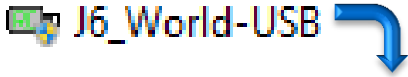


Windows Vista, 7, & 8

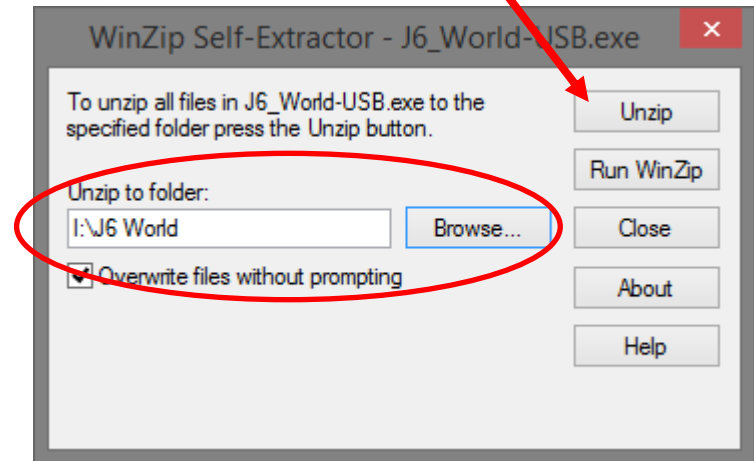
Save the file to your USB flash drive where you created the new folder.



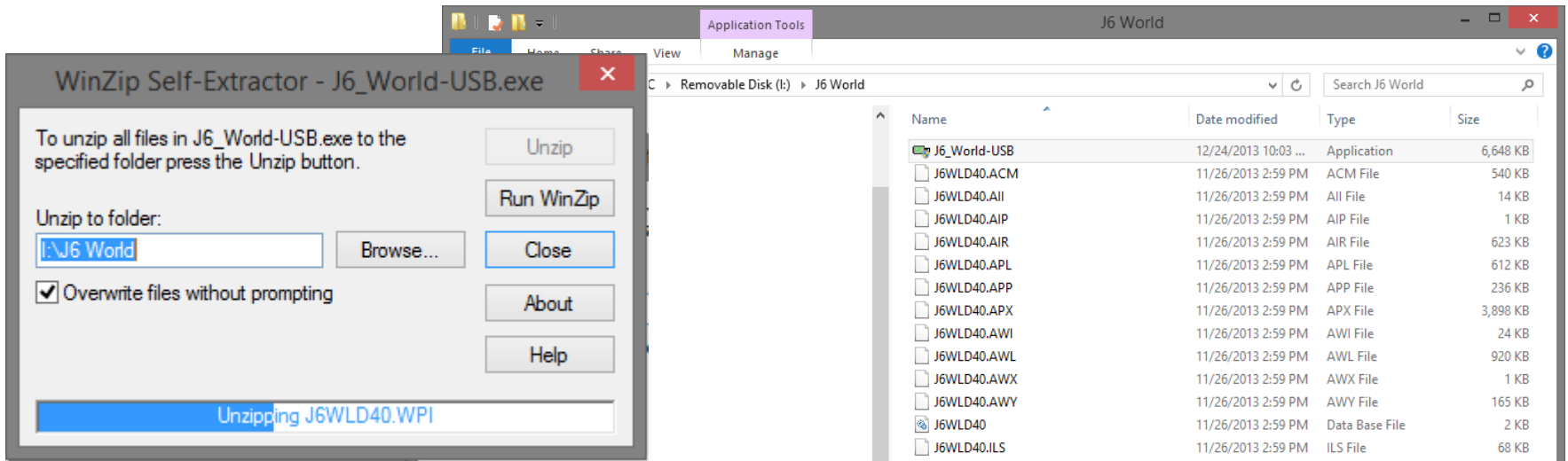
Run the file by double clicking it.



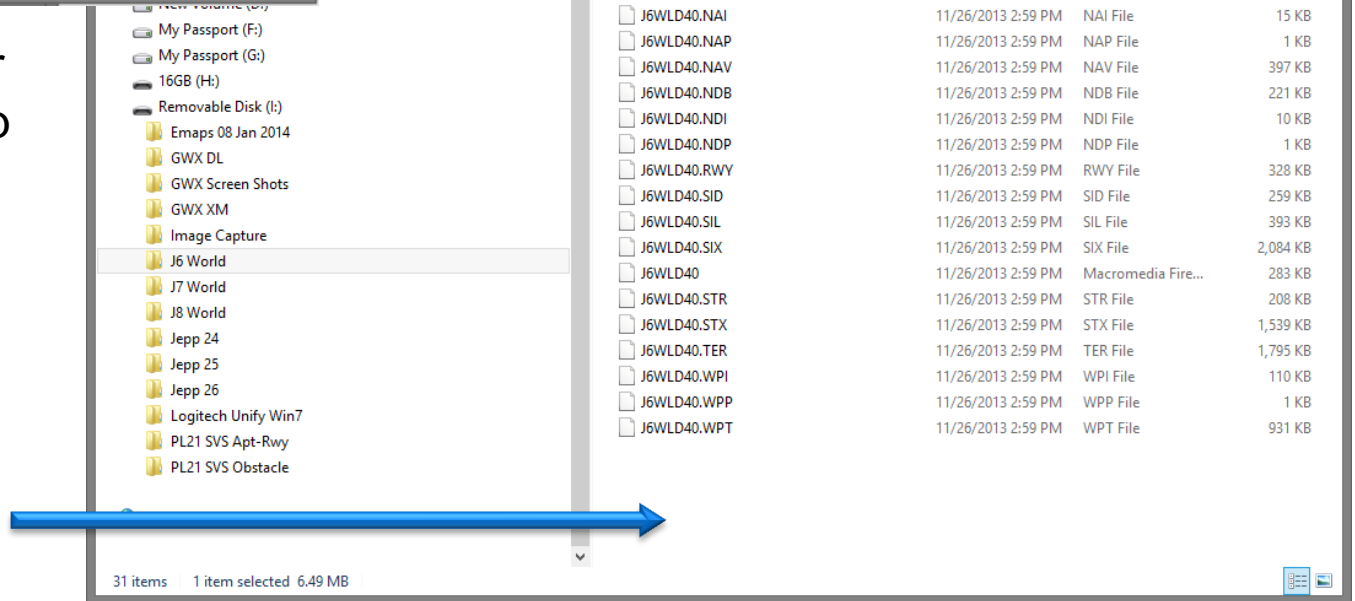
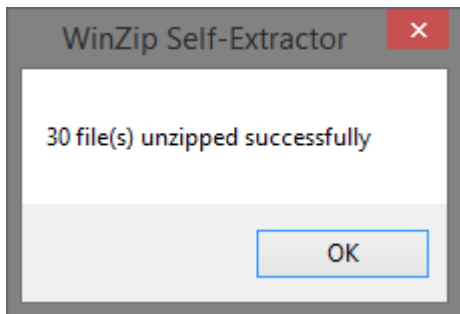
After browsing to the folder where the files will be stored, click the Unzip button.



With Windows Explorer open to the directory you created on your USB drive you can see the files unzip to the folder assuring you they are extracting to the correct location.

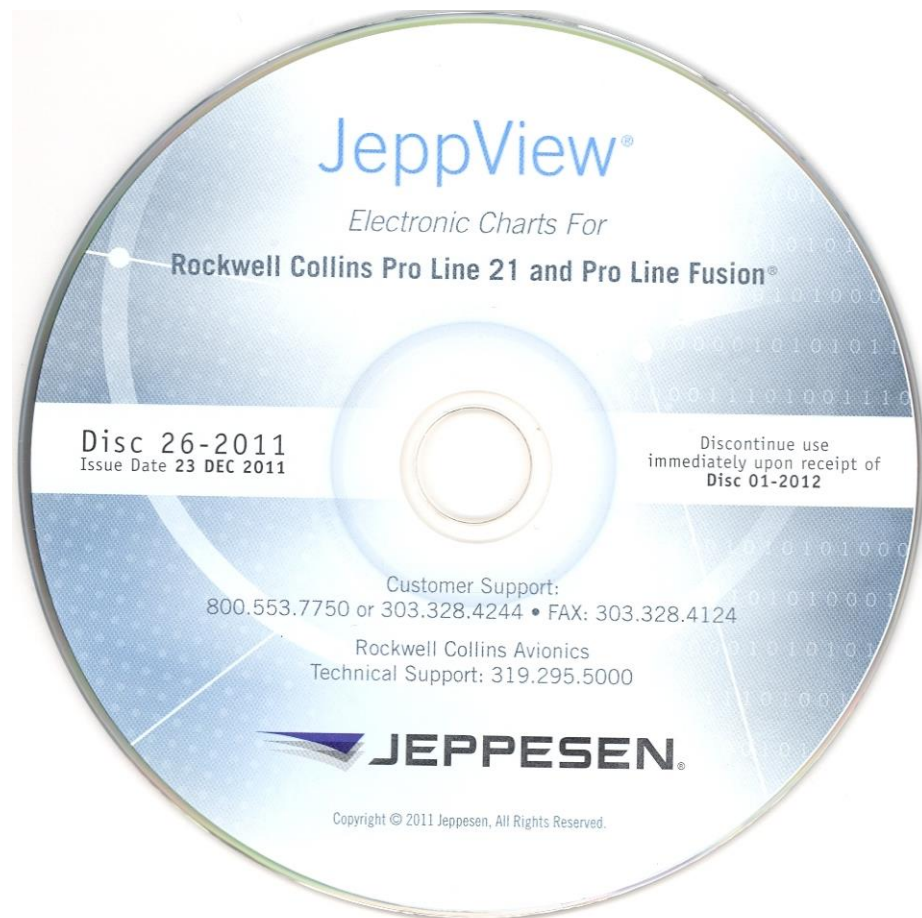


After the progress bar has finished, a pop up window will prompt when finished.



E-CHART Database subscriptions

Jeppesen Subscription CD ROM discs (2) arrive bi-weekly

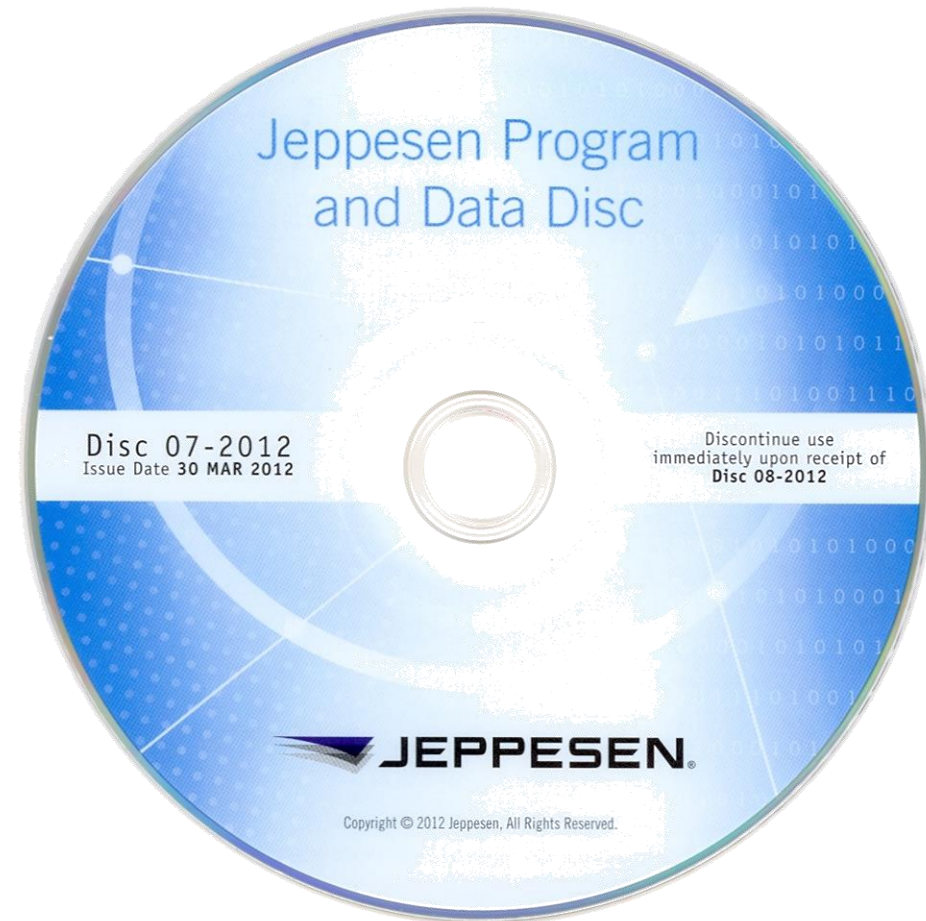


E-CHART Database subscriptions (JeppView for the personal computer)

This DVD-ROM disc is for a PC based Chart viewing tool called JeppView

Do not load this into the File Server Unit (FSU)

This is very useful desk top PC tool for preflight and or printing specific charts prior to flight.

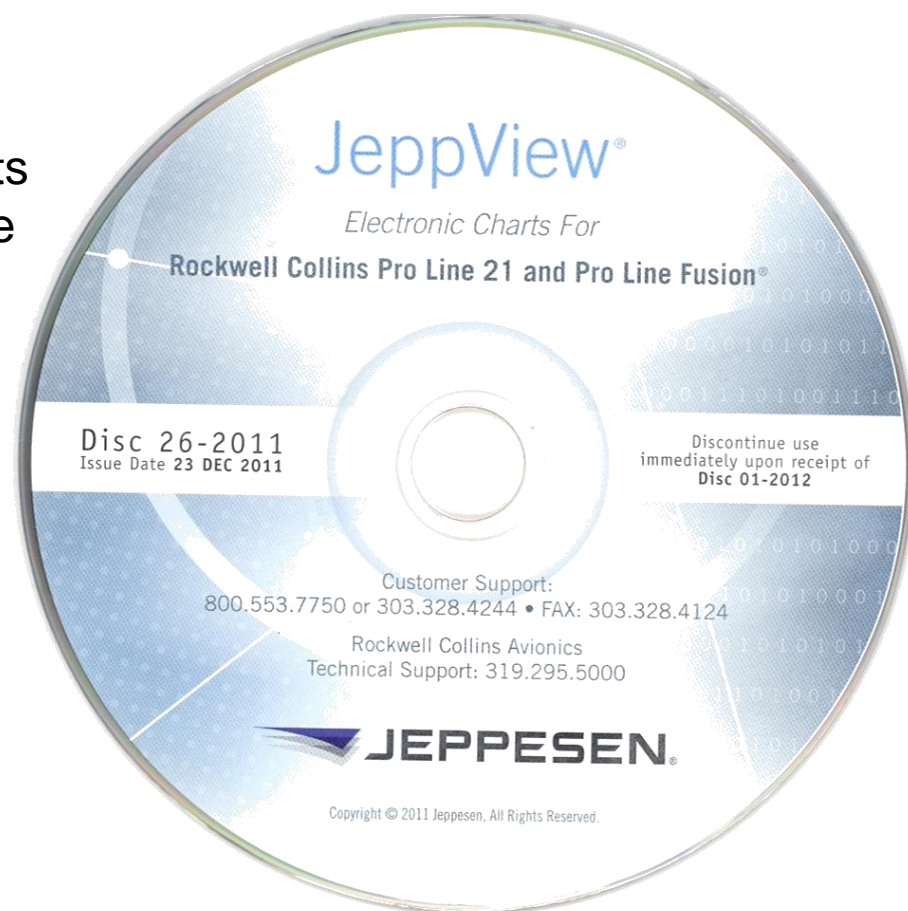


E-CHART Database subscriptions (JeppView for the File Server Unit)

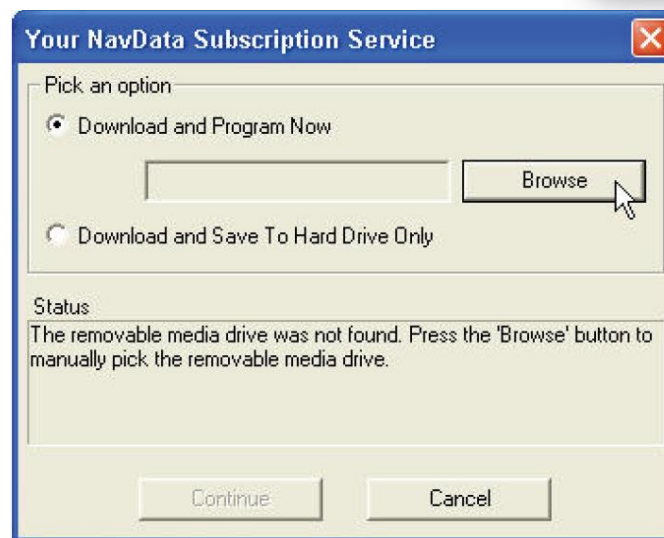
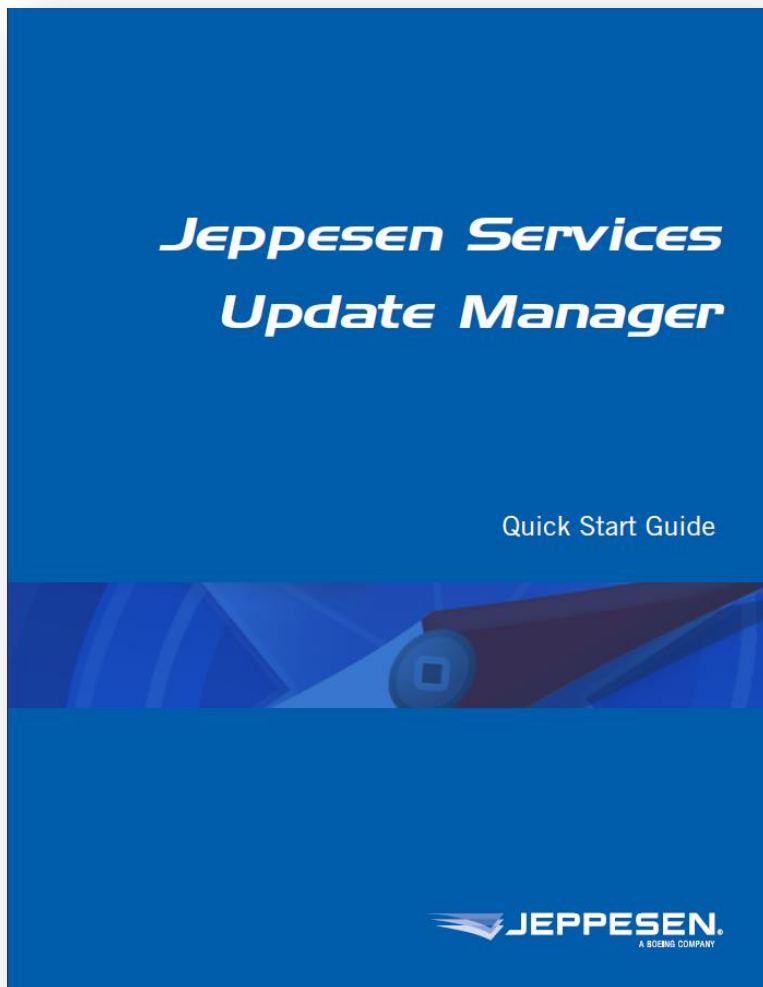
- This CD is loaded into the File Server Unit (FSU)

The databases associated with E-charts must be loaded into the FSU before the system is functional.

Make sure all pertinent information (subscription numbers, access codes, etc.) is available before attempting to install databases.



Jeppesen Services Update Manager (JSUM)



Services	Cycle Date	Updates ...	Download ...	Program ...
NavData Coverage	2006-May-11	1	100%	

Most customers are now receiving their electronic charts updates from Jeppesen over the internet using the JSUM program.



Loading the Data Base to CPAS-3000

Manage Data/Software

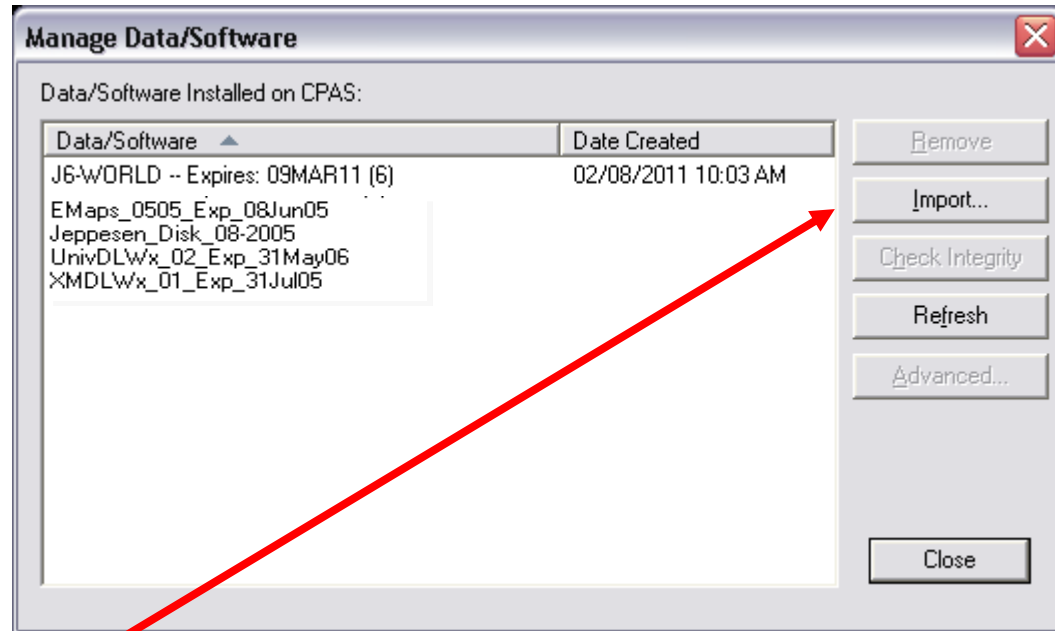


Double click the Manage Data/Software button to import the database from your USB flash drive.

CPAS Loading

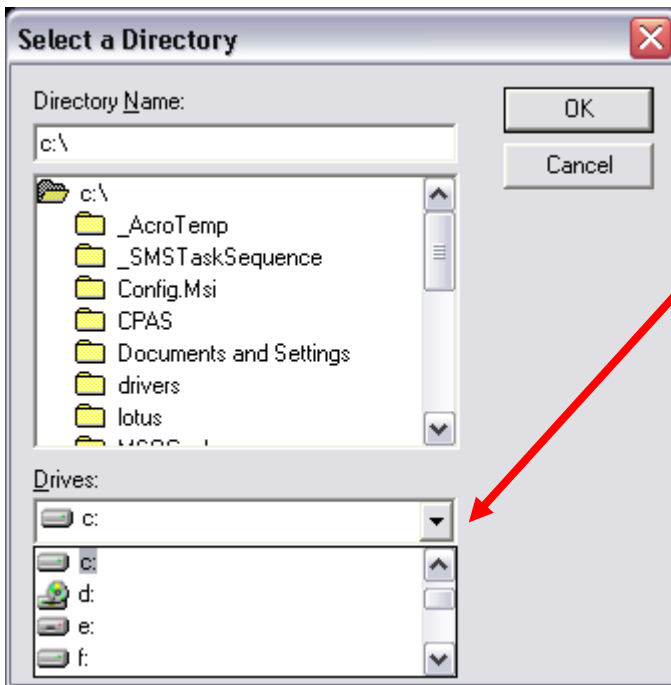
Verify Needed
Databases are
loaded into
CPAS, then
close

If desired
database is not
listed here it will
need to be
imported



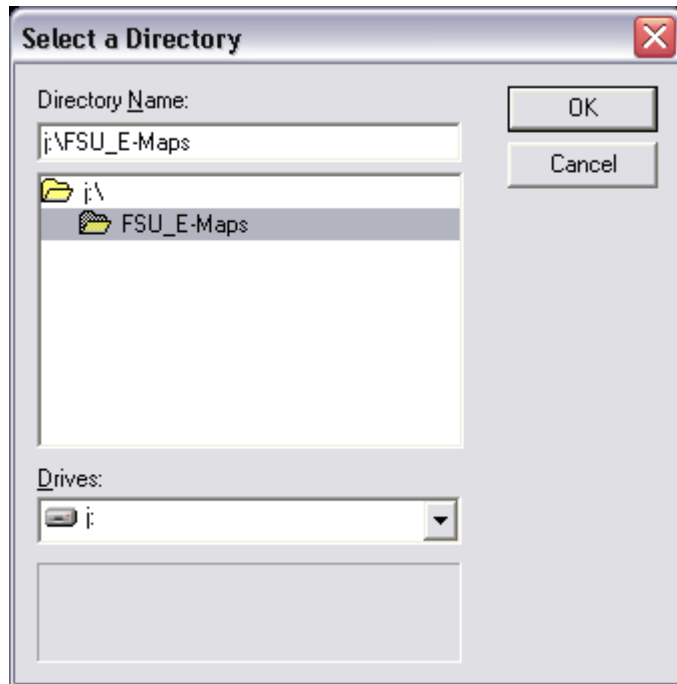
The import function copies and installs desired database in CPAS

CPAS does not need to be connected to the aircraft to Import Databases

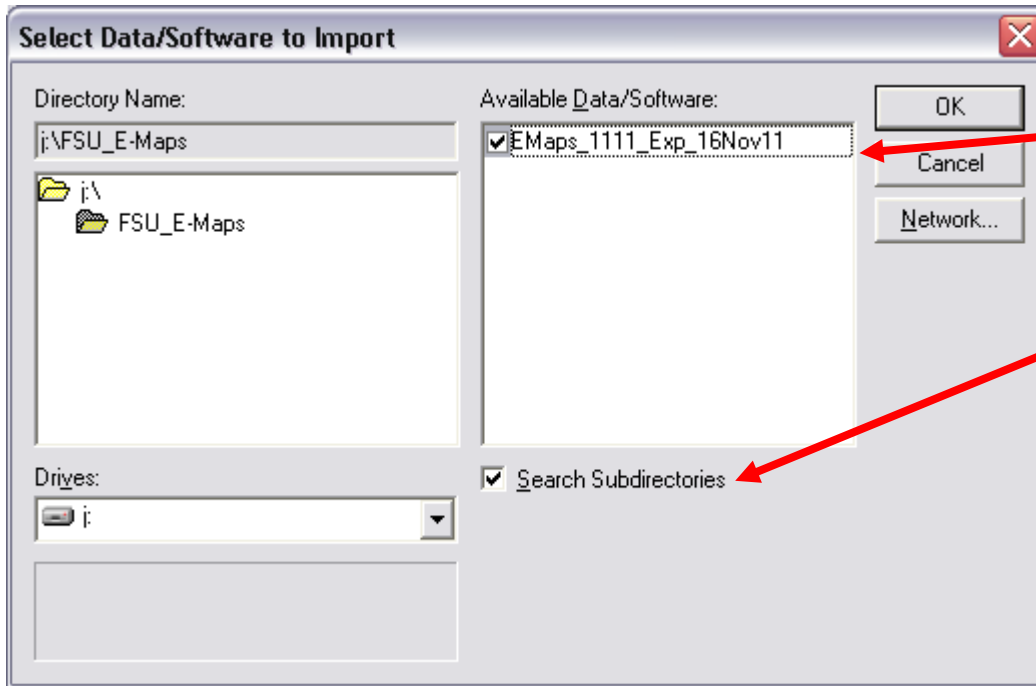


The import Window appears

Select the drive that contains data to import



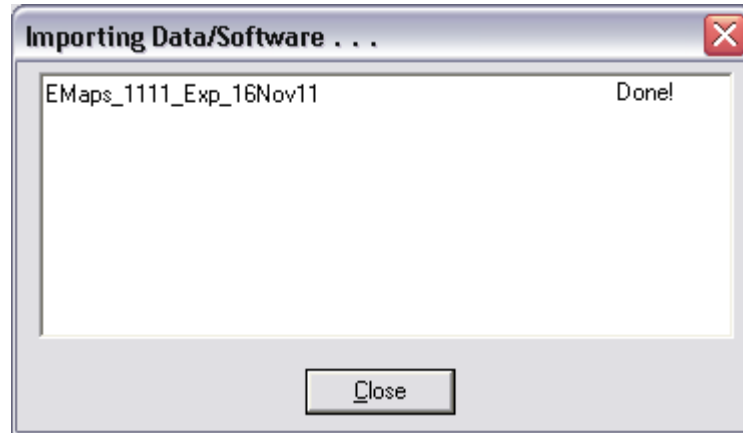
Select the database to import (E-Maps database in this example) was saved to a folder created prior to extracting (unzipping) the data.



Select the database to import
(EMaps database shown in
this example)

Check the Search
Subdirectories to see all the
directory locations

Click "OK" when finished

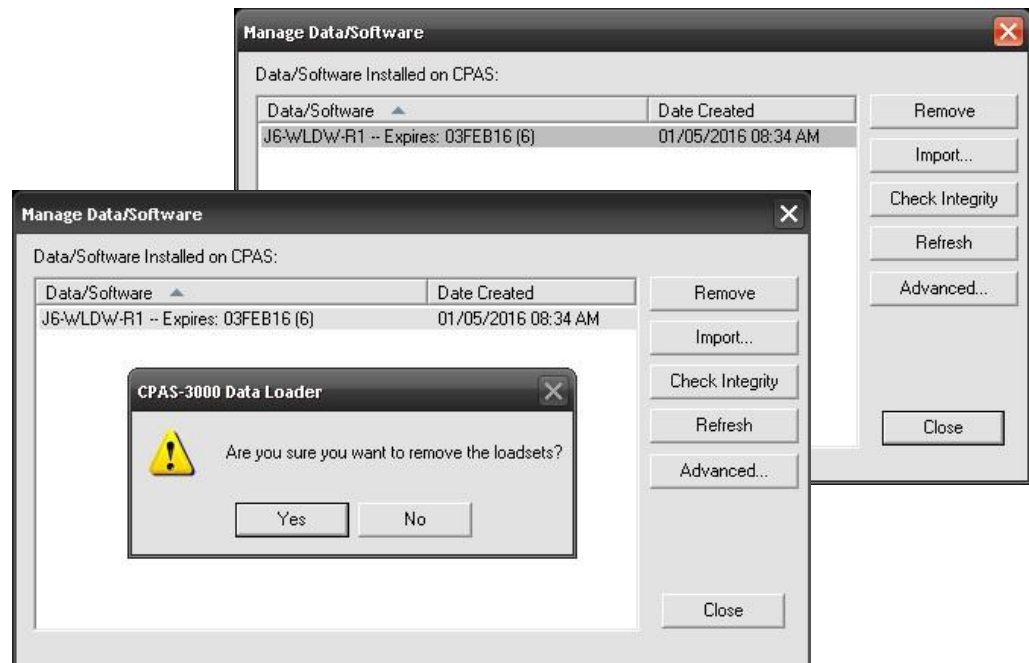


An importing progress box appears, select Close when done

Removing Old CPAS Databases

Database Removal Through CPAS

1. Manage Data Software
2. Select the database to be removed.
3. Select Yes to remove.

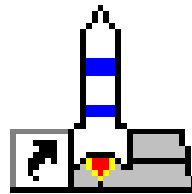




Upload the Data Base to Your Aircraft

CPAS Loading to Aircraft

- To achieve the best data loading experience, make sure the aircraft is on 28VDC ground power and the notebook computer is plugged into 110VAC.
- Make sure the aircraft is in the maintenance mode. Some aircraft will have a maintenance switch and others will be switched automatically when on ground.
- Connect computer and Ethernet cable to aircraft RJ45 connector.
- Apply avionics power (if not on already)
- Launch CPAS Application by Double Clicking CPAS Icon on desktop



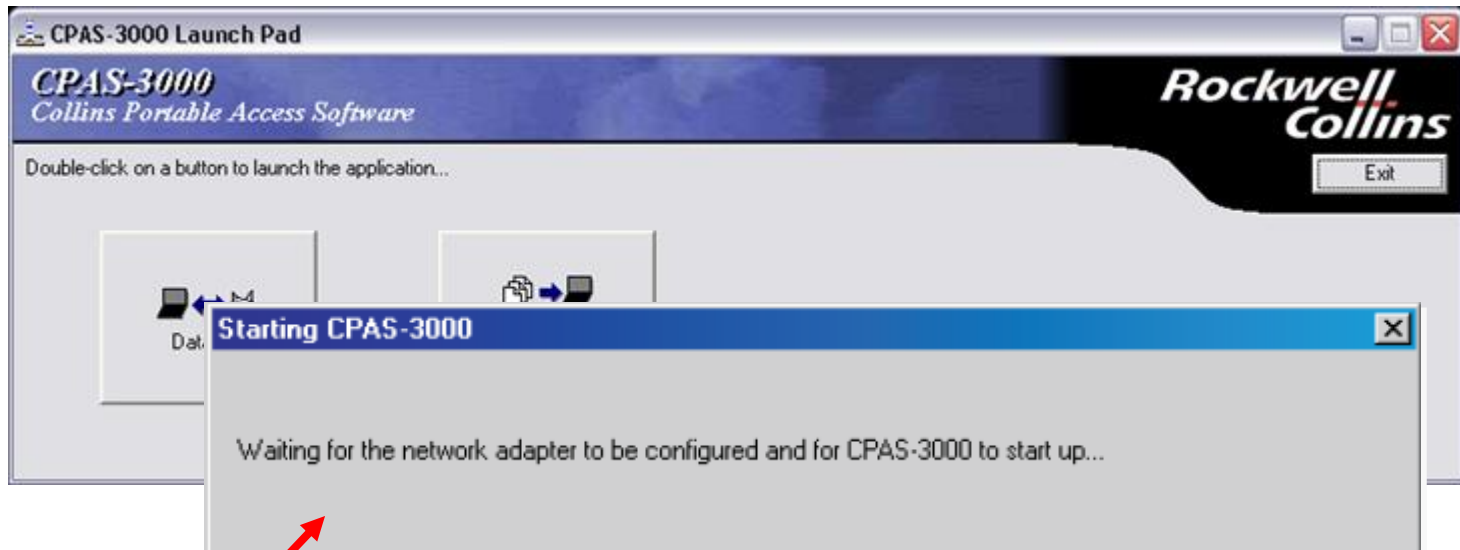
CPAS-3000
LaunchPad

Dataloading to the Aircraft



Double click the Dataload button to upload the database to the aircraft.

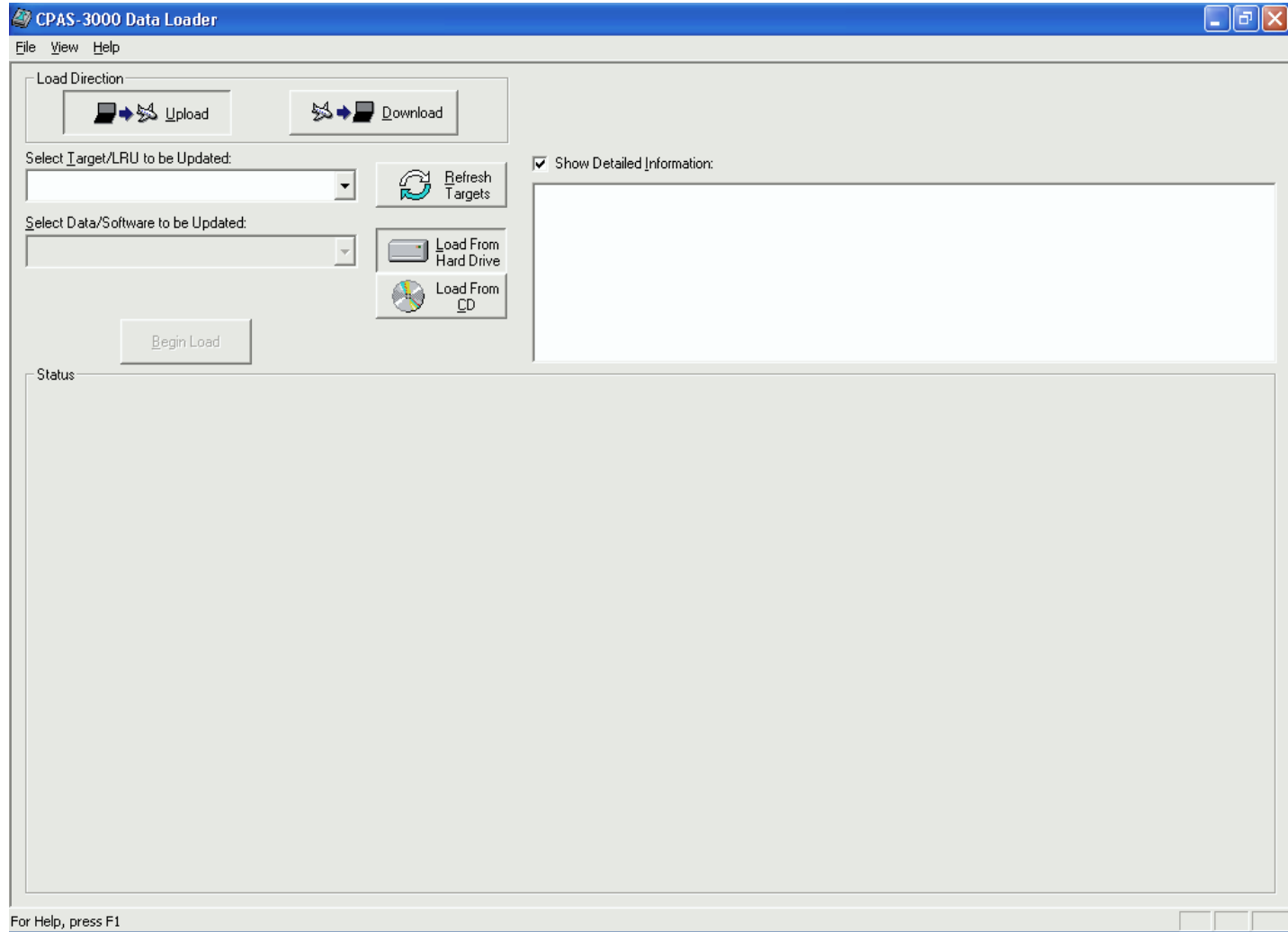
CPAS Loading



Verify that this message appears

CPAS Loading: Uploading a Database

CPAS Data
Loader window
opens



- **Loading operations nomenclature**

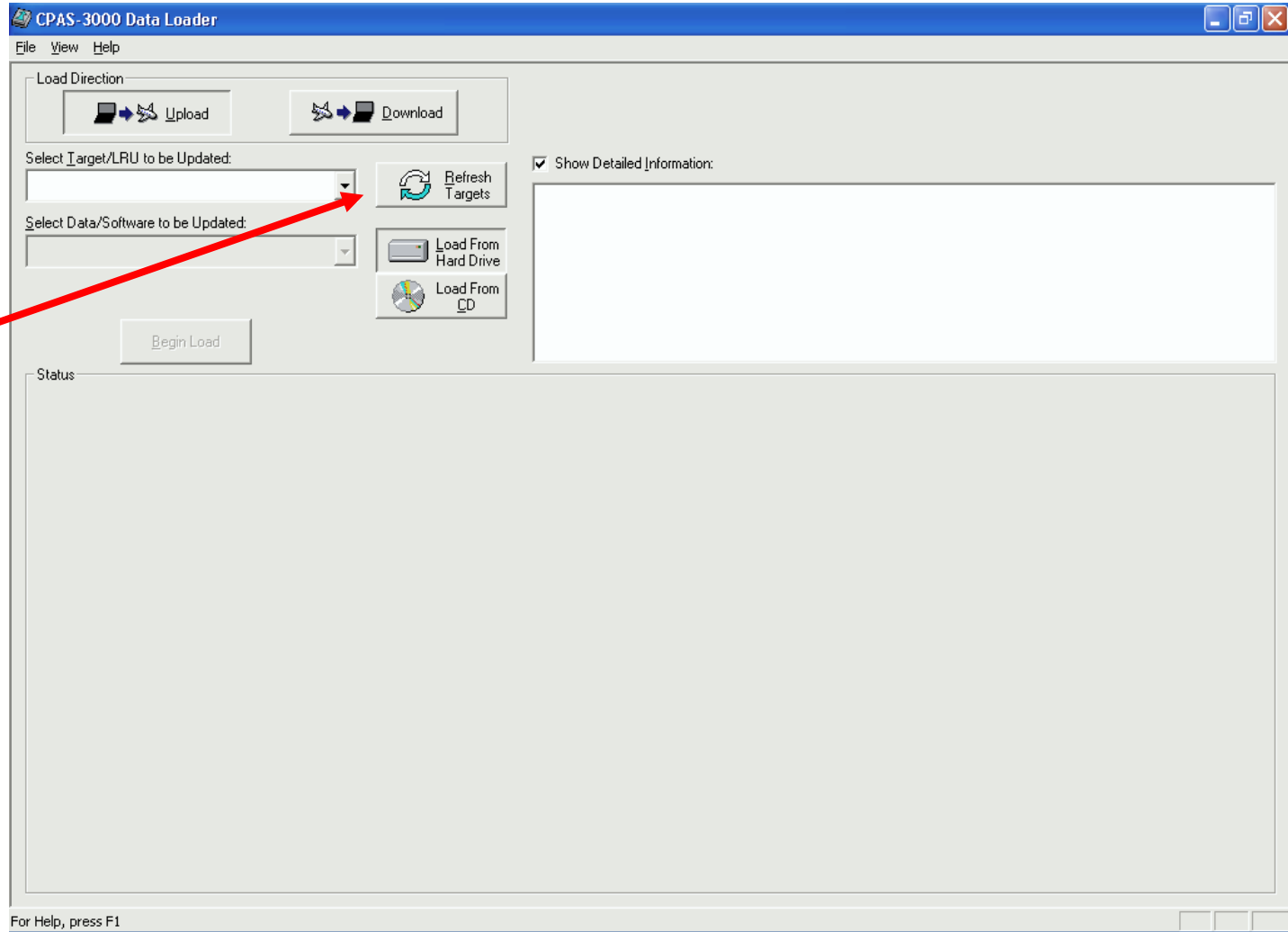
- Uploading: Moving data from a disk, computer, etc. to the aircraft



- Downloading: Moving data from aircraft to disk, computer, etc.



CPAS Loading: Uploading a Database

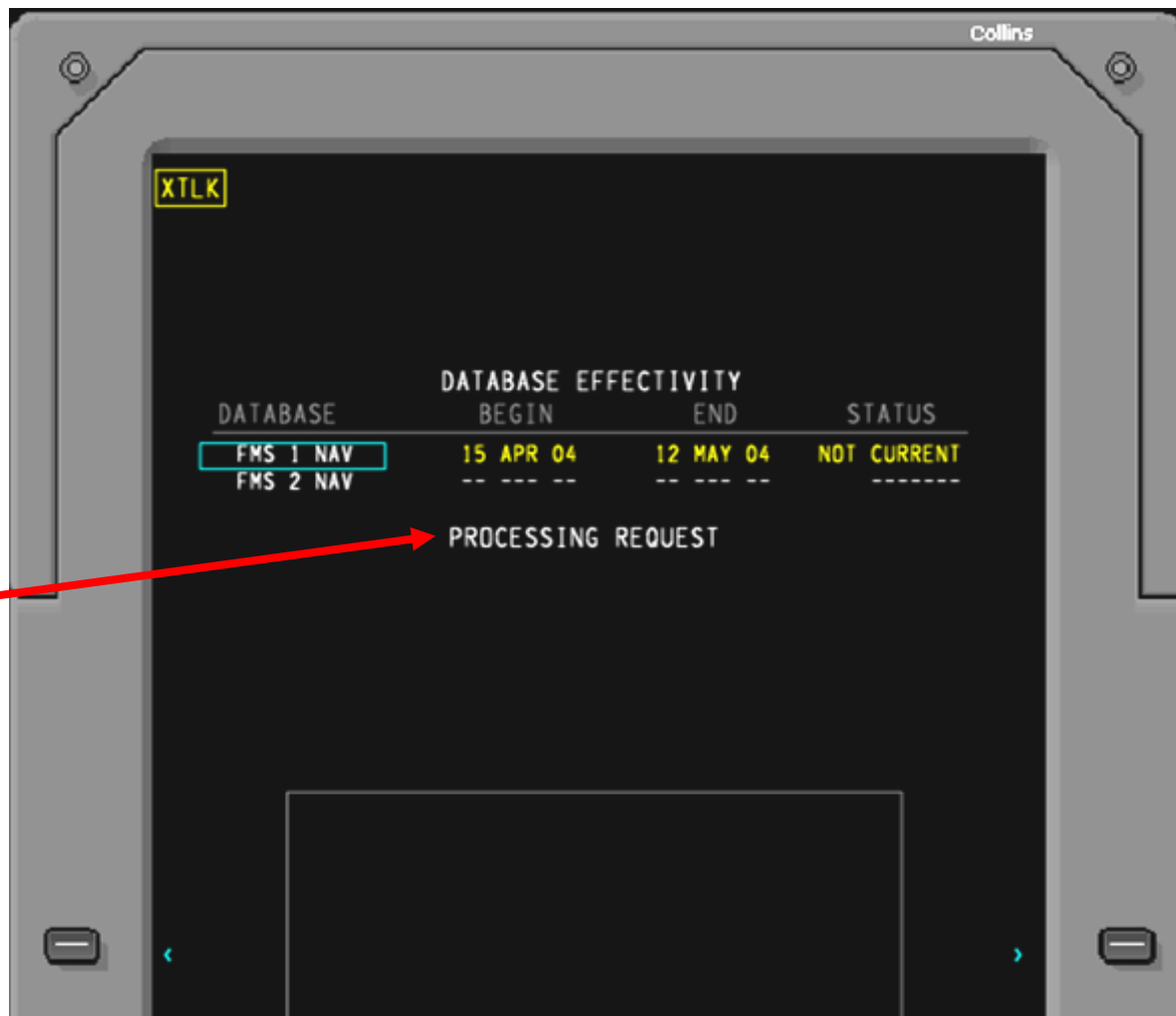


Select "Refresh
Targets" Button

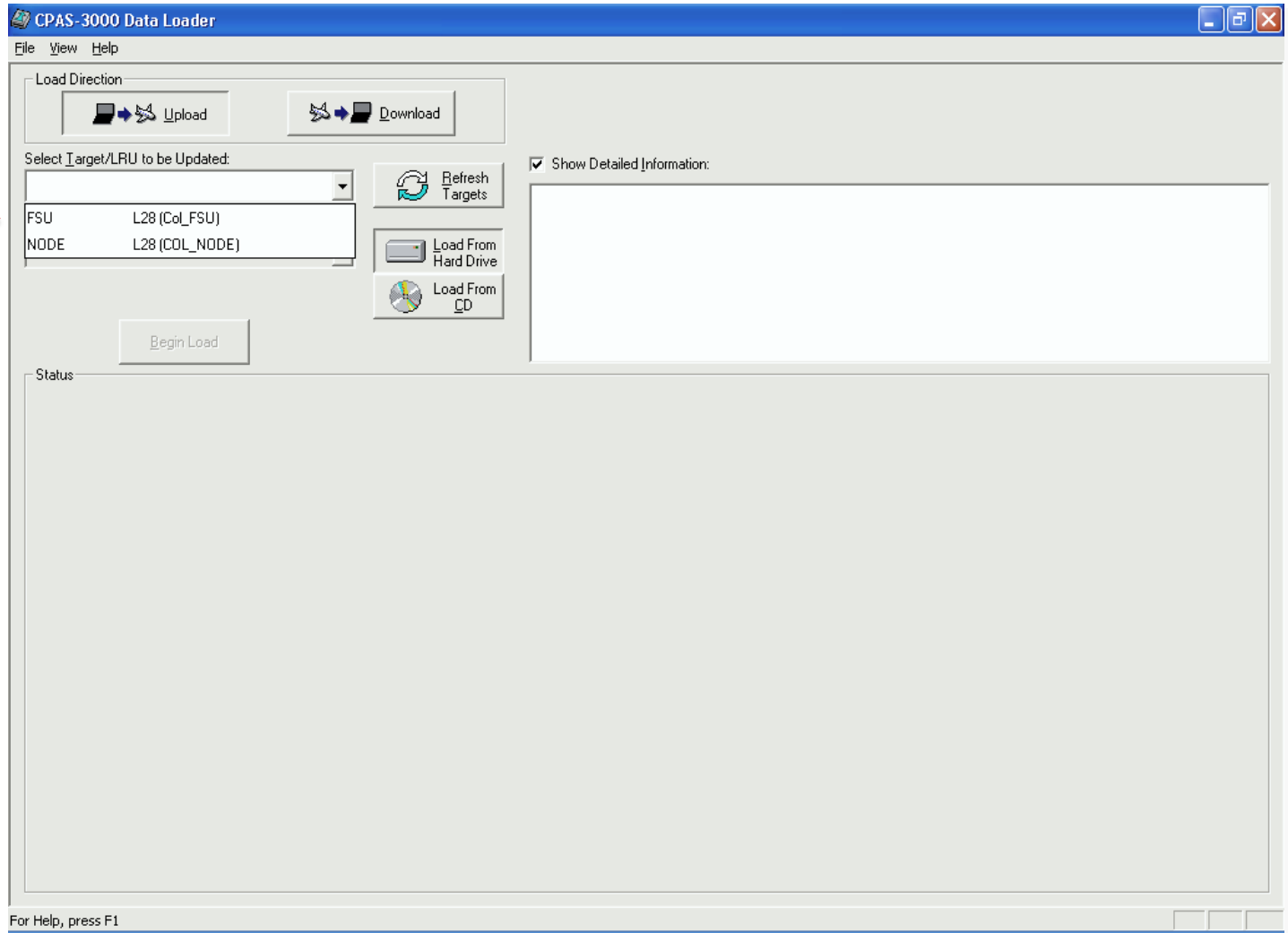
CPAS Loading: Uploading a Database

MFD DATABASE
EFFECTIVITY menu
initially displays
“PROCESSING
REQUEST”, and then
“FSU INOP”

*This is a normal
indication*

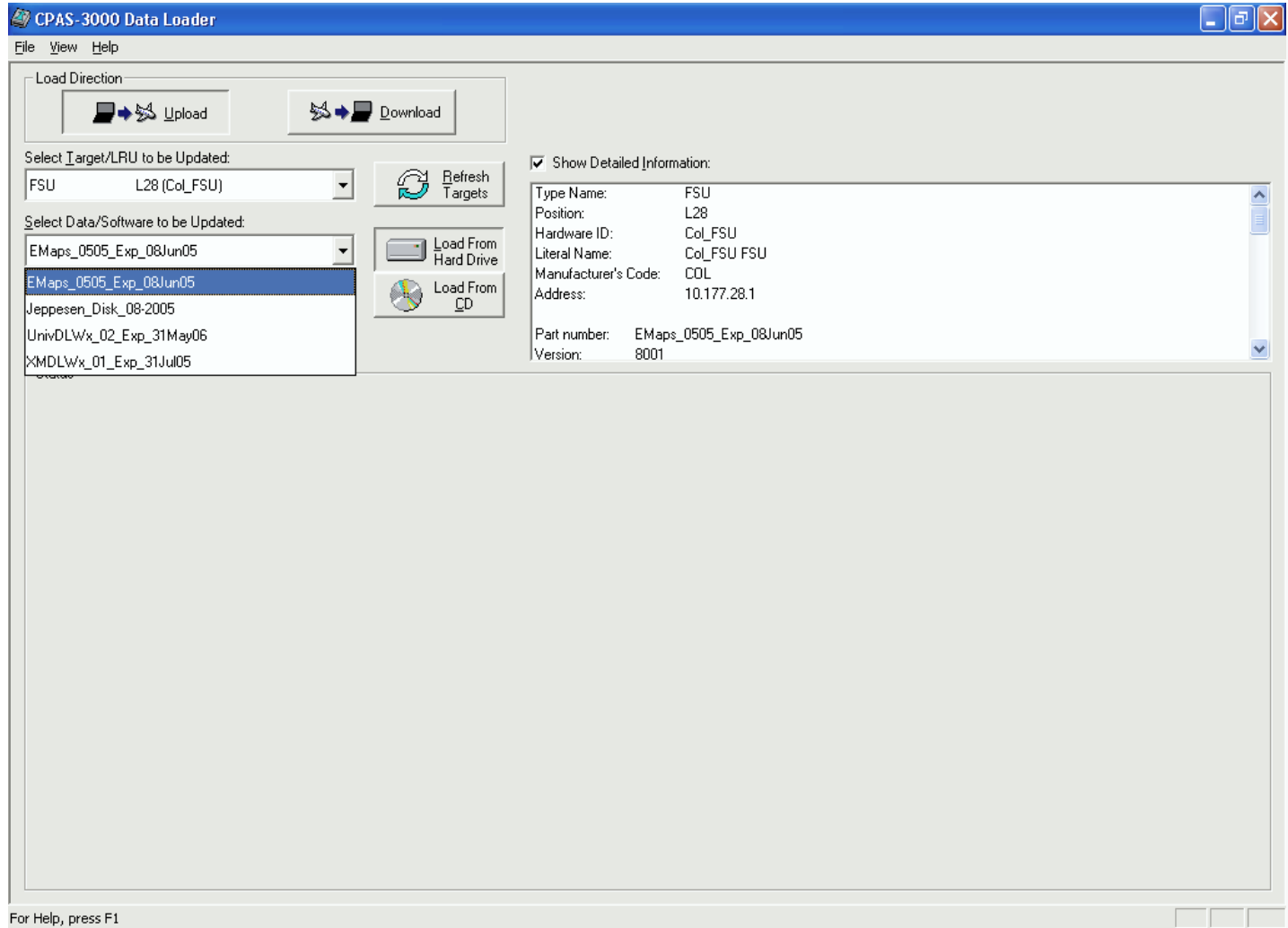


CPAS Loading: Uploading a Database



Select LRU to be updated from dropdown menu (FSU in this example)

CPAS Loading: Uploading a Database



Select data to upload into LRU (EMaps in this example)

CPAS Loading: Uploading a Database

Select "Begin Load" to initiate load process



The screenshot shows the 'CPAS-3000 Data Loader' application window. The 'Load Direction' section has 'Upload' selected. The 'Select Target/LRU to be Updated' dropdown is set to 'FSU L28 (Col_FSU)'. The 'Select Data/Software to be Updated' dropdown is set to 'EMaps_0505_Exp_08Jun05'. The 'Begin Load' button is highlighted with a red arrow. The status window shows the progress of the upload, with an overall progress of 14%. The status text includes:

```

Beginning file 'EMaps_0505_Exp_08Jun05_0003.LUP'
Done with file 'EMaps_0505_Exp_08Jun05_0003.LUP'
Beginning file 'COL_FSU_L28.LUS'
Done with file 'COL_FSU_L28.LUS'
Upload in progress. 11% complete; 0 sec remain; code: 0002 ()
No data files are currently being transferred.
Beginning file 'COL_FSU_L28.LUS'
Done with file 'COL_FSU_L28.LUS'
Upload in progress. 11% complete; 0 sec remain; code: 0002 ()
No data files are currently being transferred.
Beginning file 'EMaps_0505_Exp_08Jun05_0004.LUP'
Done with file 'EMaps_0505_Exp_08Jun05_0004.LUP'
Beginning file 'COL_FSU_L28.LUS'
Done with file 'COL_FSU_L28.LUS'
Upload in progress. 14% complete; 0 sec remain; code: 0002 ()
No data files are currently being transferred.
Beginning file 'EMaps_0505_Exp_08Jun05_0005.LUP'
  
```

Buttons for 'Cancel Upload', 'Close Status on Completion', and 'Display Logged Status Info' are visible at the bottom of the status window.

CPAS Loading: Uploading a Database

Load progress can be monitored here



Patience please:
Some loads take about 30 minutes

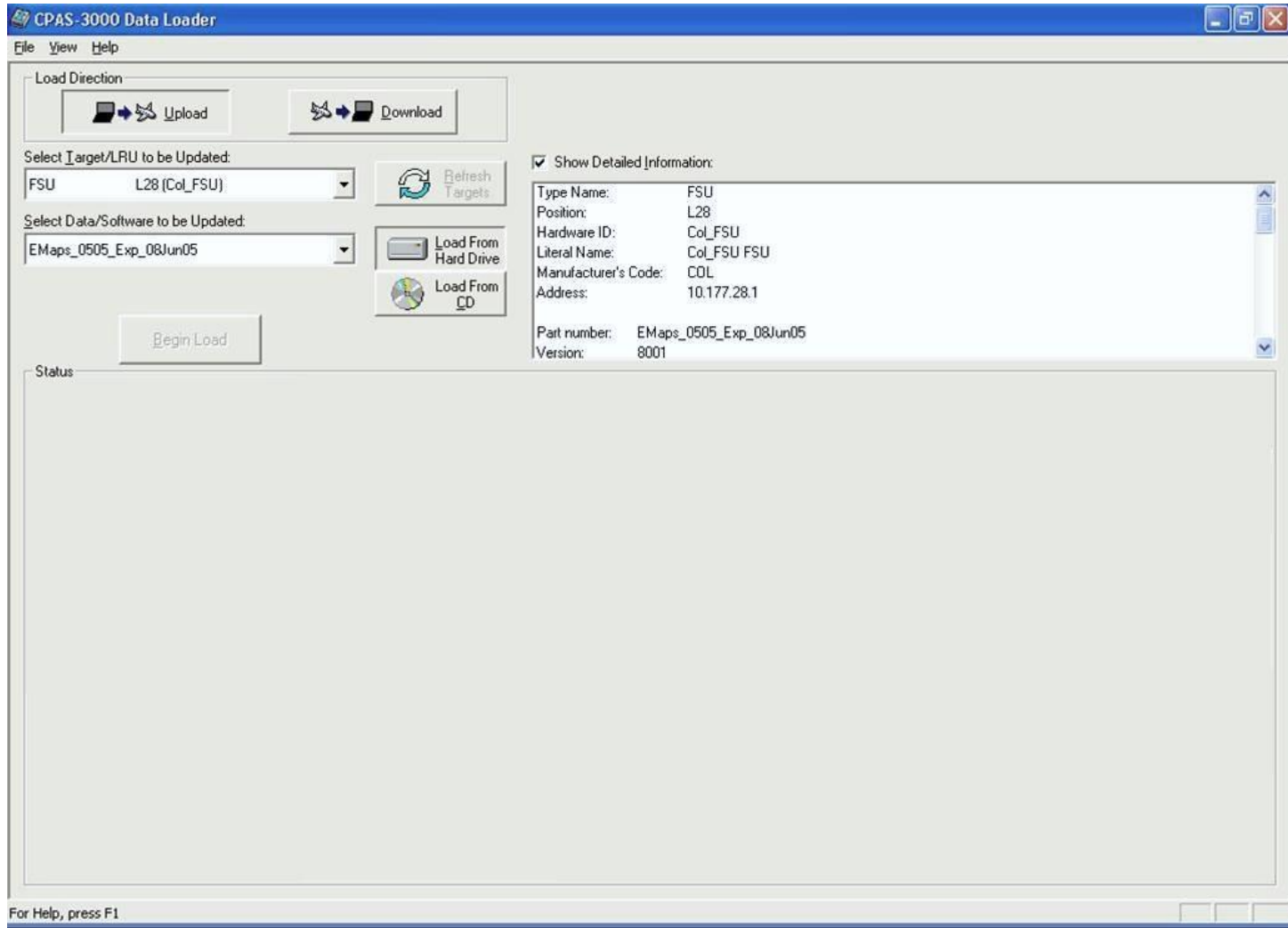
The screenshot shows the 'CPAS-3000 Data Loader' application window. At the top, there are 'File', 'View', and 'Help' menus. Below the menu bar, there are two buttons for 'Upload' and 'Download'. The 'Load Direction' section includes a 'Refresh Targets' button. The 'Select Target/LRU to be Updated:' dropdown is set to 'FSU L28 (Col_FSU)'. The 'Select Data/Software to be Updated:' dropdown is set to 'EMaps_0505_Exp_08Jun05'. There are buttons for 'Load From Hard Drive' and 'Load From CD'. A 'Begin Load' button is prominently displayed. On the right side, there is a 'Show Detailed Information:' section with a list of details: Type Name: FSU, Position: L28, Hardware ID: Col_FSU, Literal Name: Col_FSU FSU, Manufacturer's Code: COL, Address: 10.177.28.1, Part number: EMaps_0505_Exp_08Jun05, and Version: 8001. The 'Status' section at the bottom left shows a progress bar for 'EMaps_0505_Exp_08Jun05' at 14% completion. The main status window contains a log of file upload operations, including 'Beginning file', 'Done with file', and 'Upload in progress' messages. At the bottom, there are buttons for 'Cancel Upload', 'Close Status on Completion', and 'Display Logged Status Info'.

CPAS Loading: Uploading a Database

Status box
closes when
load is
complete

Repeat steps
for additional
database
updates



Close when
done



CPAS Loading: Uploading closeout

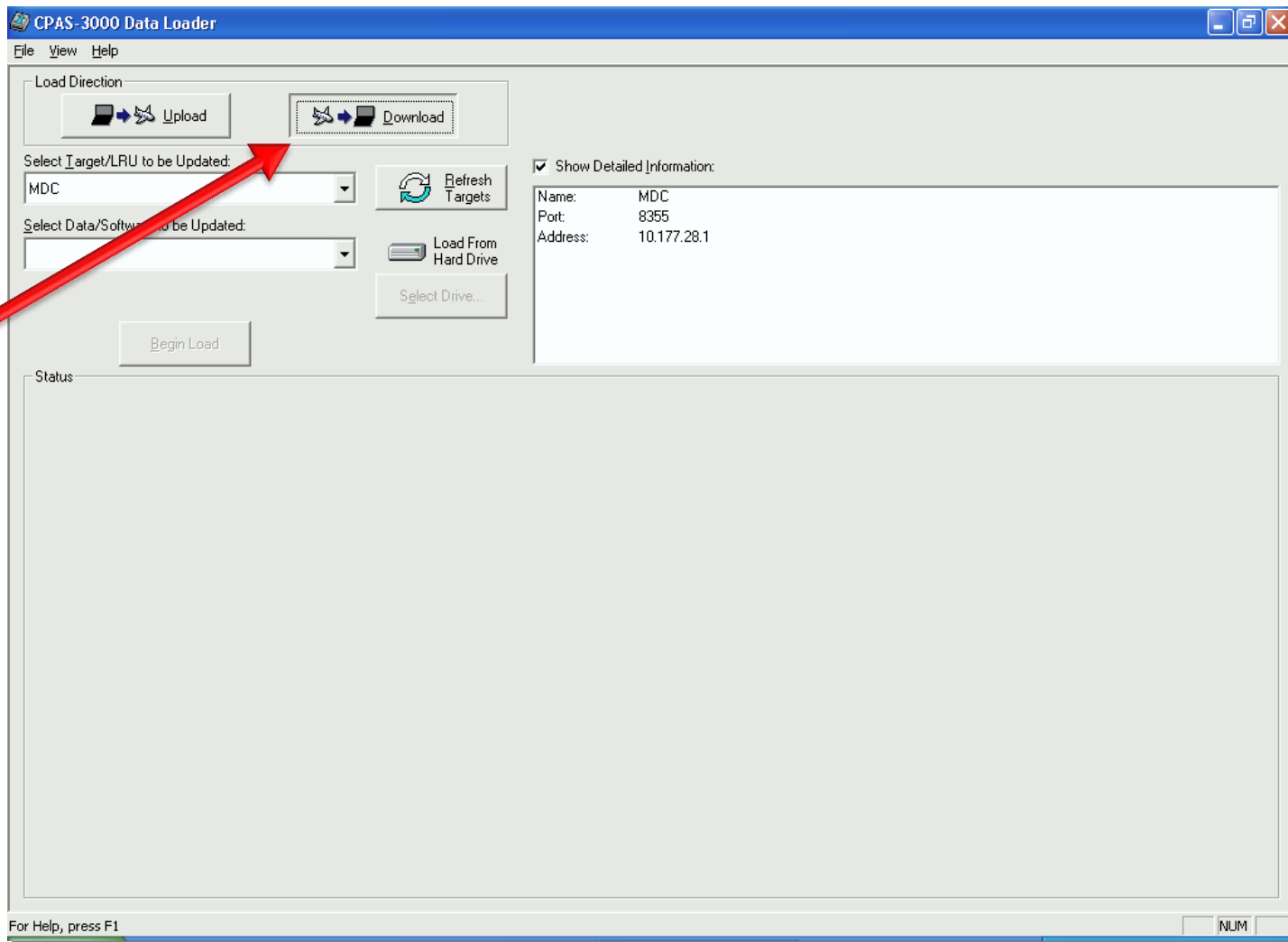


Select "Exit" to close program
Disconnect Ethernet Cable from aircraft
FSU Recovers automatically in a few minutes



Down Load LRU Data from the Aircraft to CPAS-3000

CPAS Loading: Downloading a Database

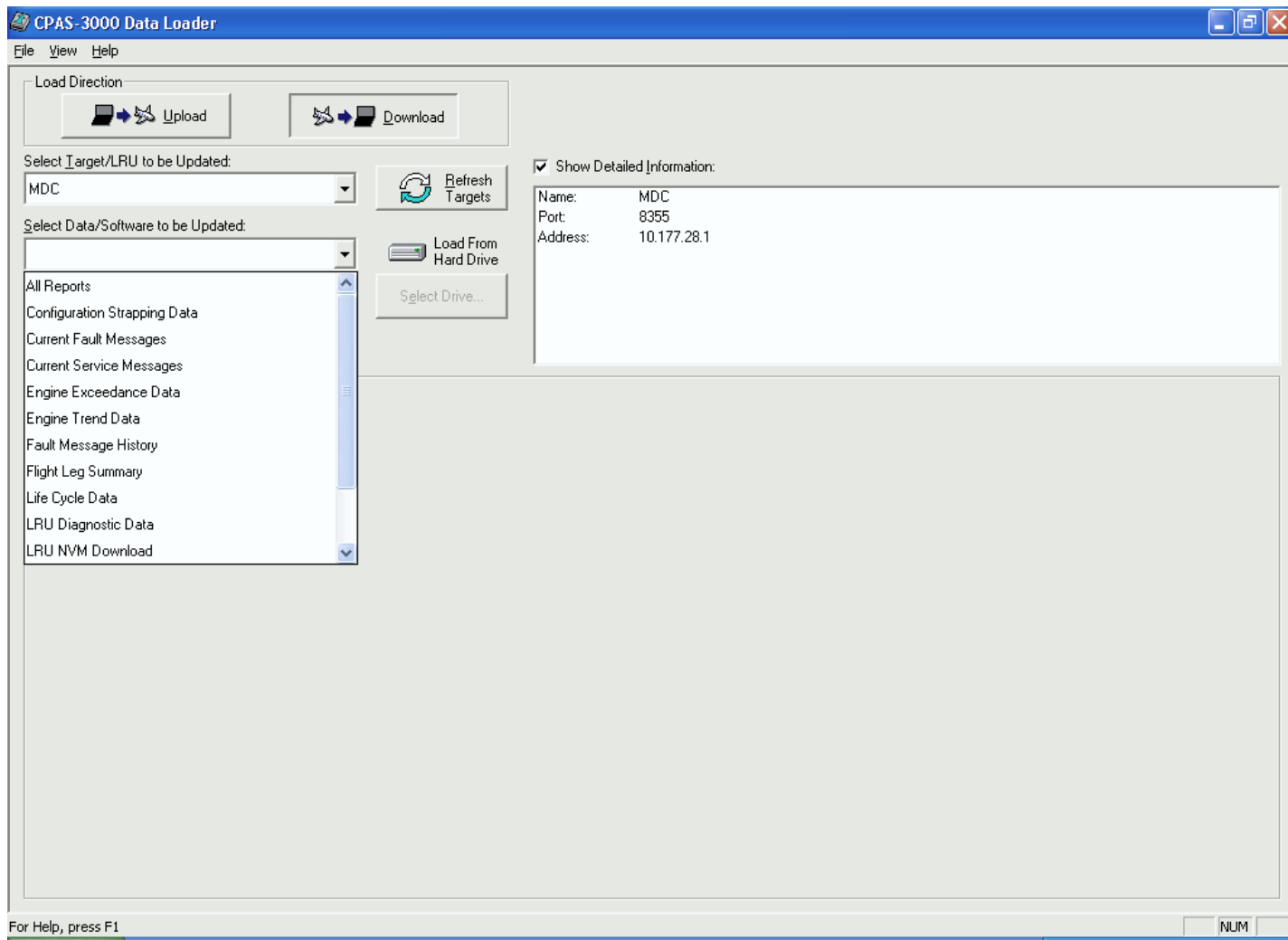


To Download
data from an
LRU select
“Download”

CPAS Loading: Downloading a Database

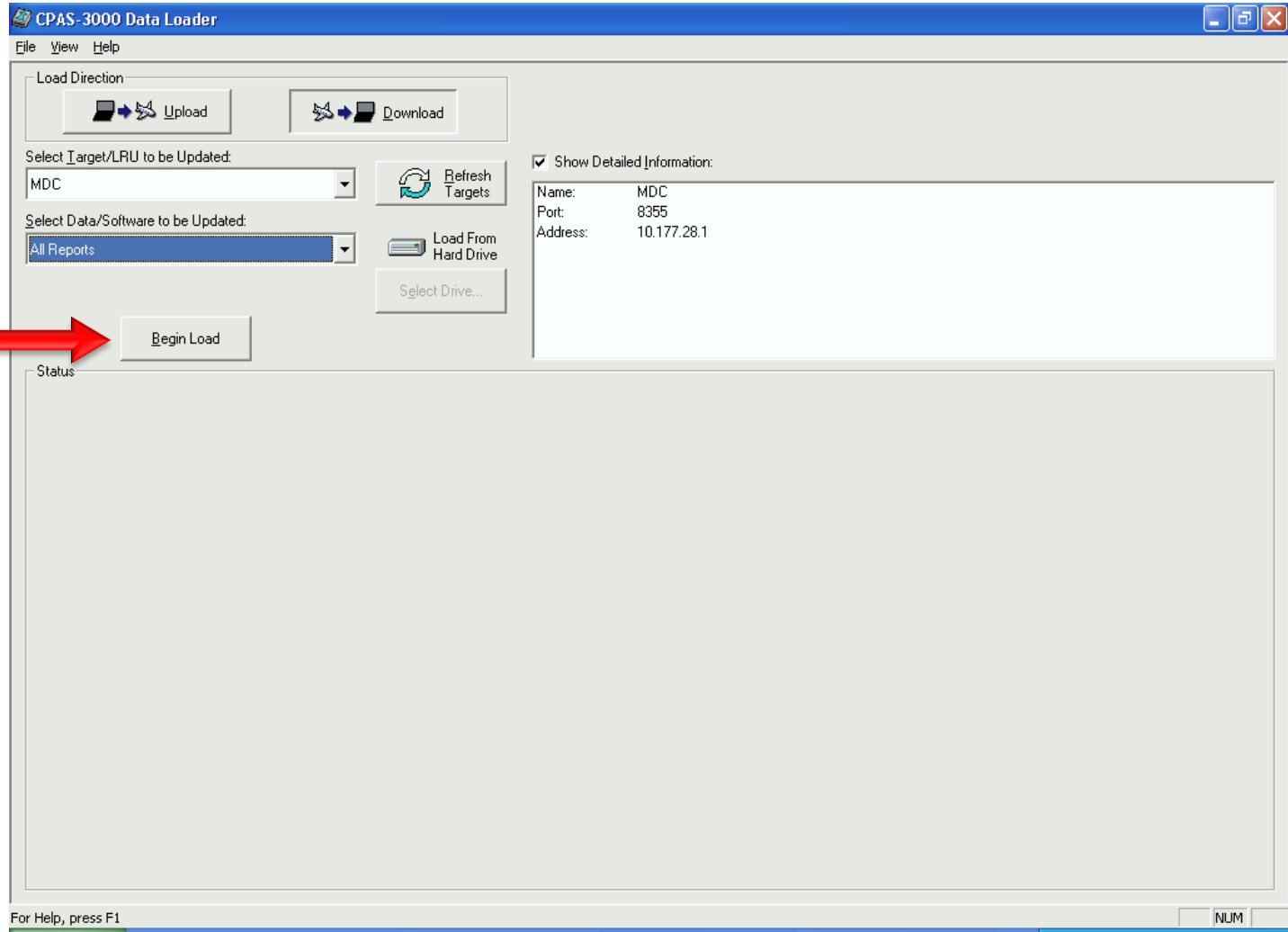
Select which LRU to download from. The MDC is used in this example.

CPAS Loading: Downloading a Database



Select which
File from your
selected LRU
to download

CPAS Loading: Downloading a Database



Select “Begin Load” to initiate download of file (All Reports in this example)

CPAS Loading: Downloading a Database

Green
Checkmark
indicates
download is
complete



CPAS-3000 Data Loader

File View Help

Load Direction

Upload Download

Select Target/LRU to be Updated:
MDC Refresh Targets

Select Data/Software to be Updated:
All Reports Load From Hard Drive Select Drive...

Show Detailed Information:
Name: MDC
Port: 8355
Address: 10.177.28.1

Begin Load

Status

✓ MDC
All Reports - 100%

Overall Progress: 100%

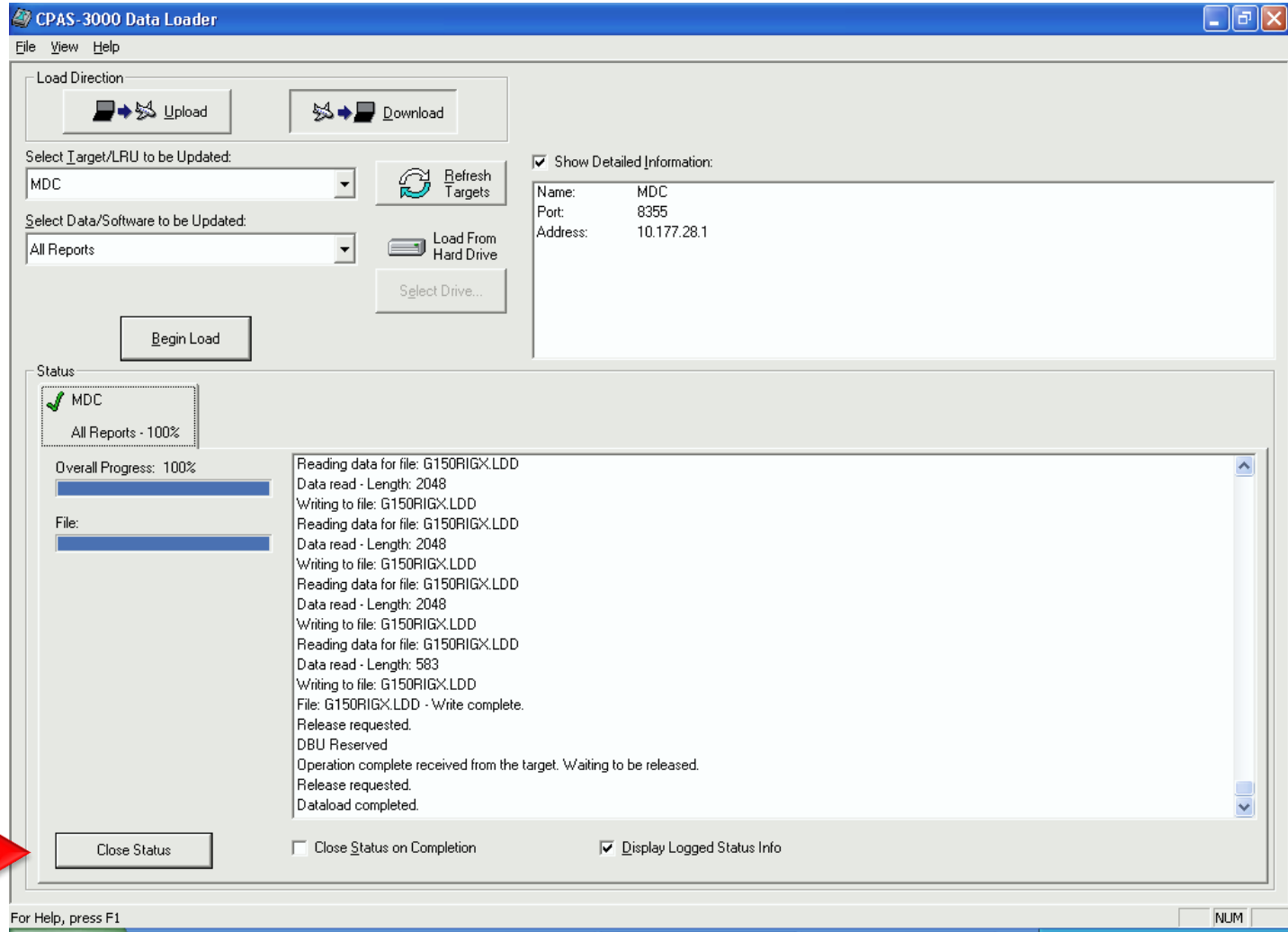
File:

Reading data for file: G150RIGX.LDD
Data read - Length: 2048
Writing to file: G150RIGX.LDD
Reading data for file: G150RIGX.LDD
Data read - Length: 2048
Writing to file: G150RIGX.LDD
Reading data for file: G150RIGX.LDD
Data read - Length: 2048
Writing to file: G150RIGX.LDD
Reading data for file: G150RIGX.LDD
Data read - Length: 583
Writing to file: G150RIGX.LDD
File: G150RIGX.LDD - Write complete.
Release requested.
DBU Reserved
Operation complete received from the target. Waiting to be released.
Release requested.
Dataload completed.

Close Status Close Status on Completion Display Logged Status Info

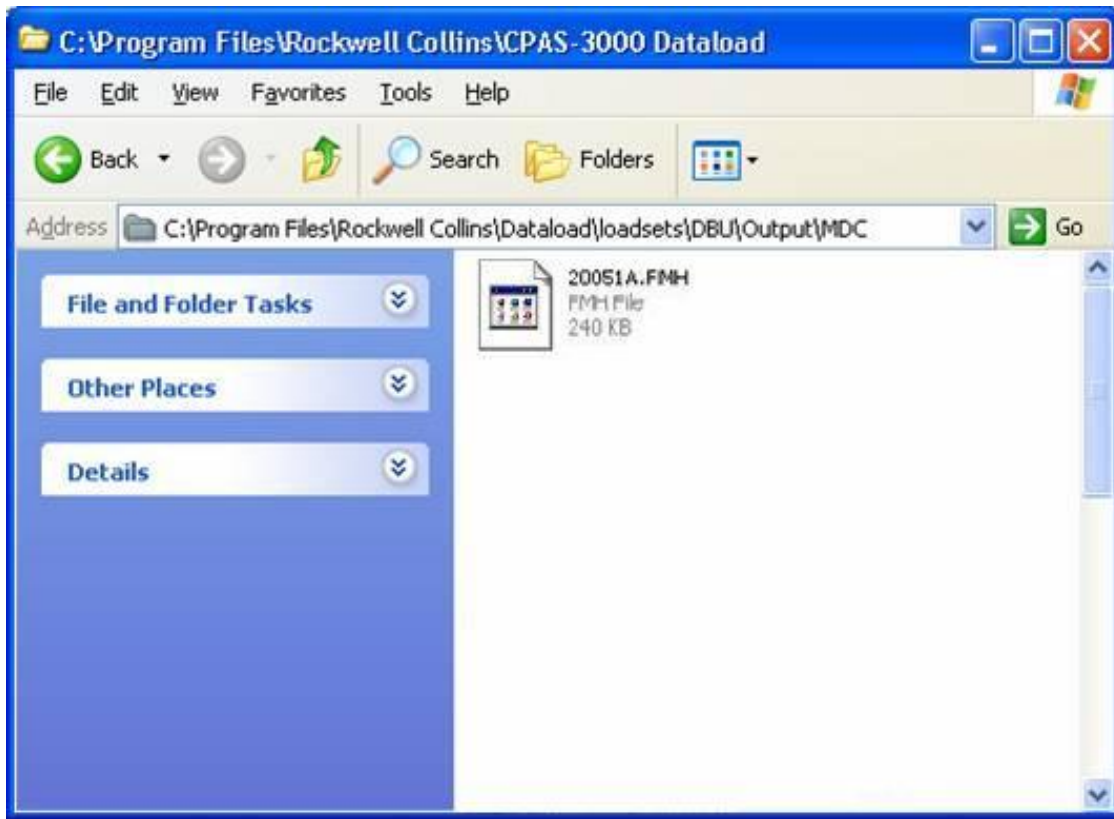
For Help, press F1 NUM

CPAS Loading: Downloading a Database




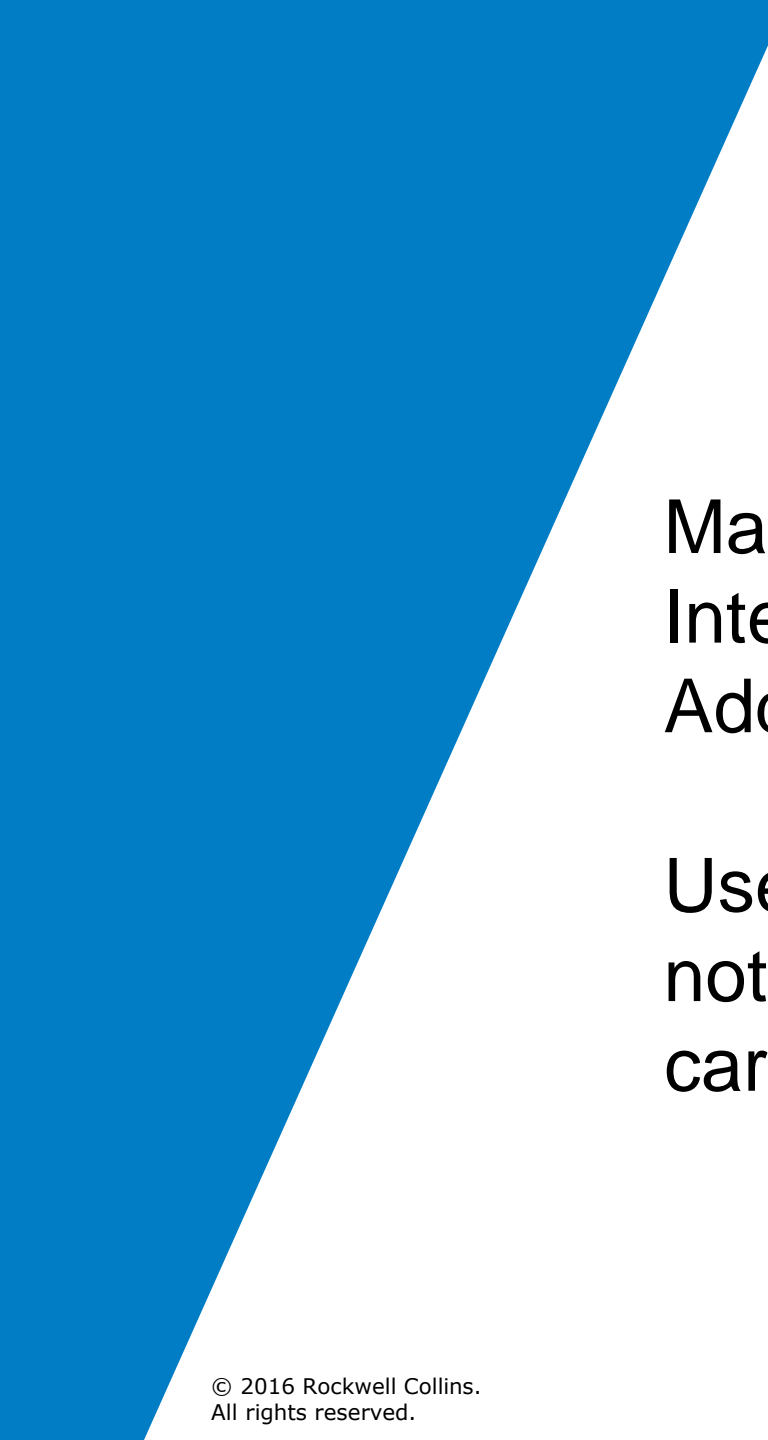
Select "Close Status" when download is complete

CPAS Loading: Downloading a Database



Downloaded MDC files can be viewed at default directory ***C:\Program Files\Rockwell Collins\CPAS-3000 Dataload\loadsets\DBU\Output\MDC***

Tip: Make a shortcut to your desktop so you can easily find the data you downloaded for future use.



Manually configuring Network Interface Card Internet Protocol Address and Subnet Mask

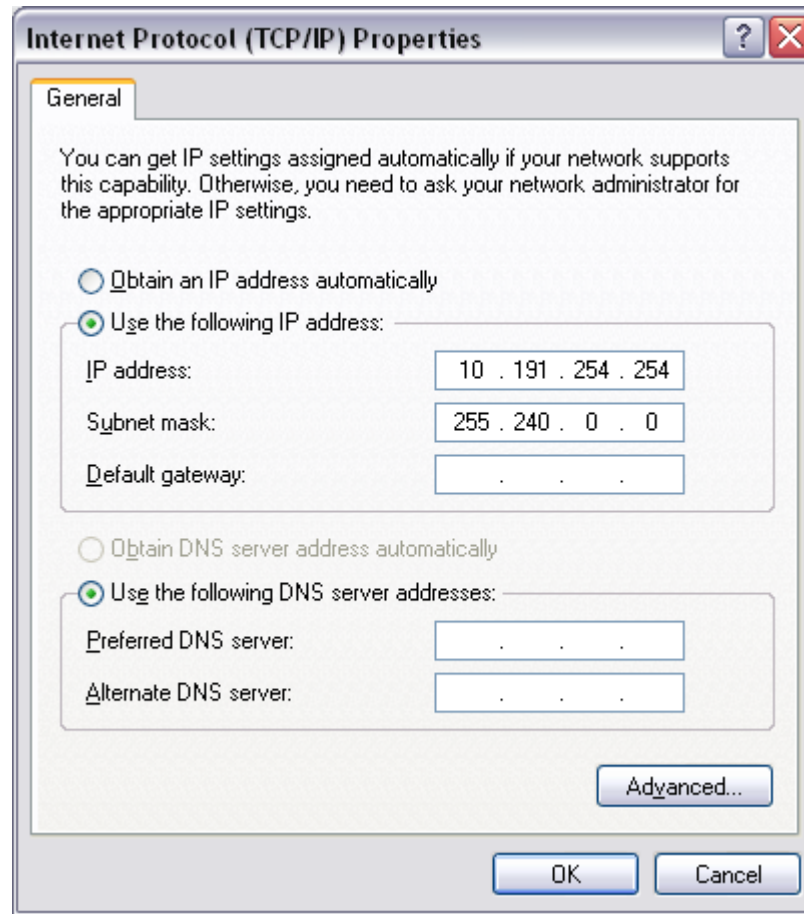
Use this only if CPAS continues to not connect through the network card in the notebook computer.

NIC IP Error Message

Note: during installation if you see an error message that reads: “Unable to automatically select a dataload Network adapter...” or maybe “Unable to retrieve one or more of the dataload adapter network settings...” you will need to manually configure the NIC IP Address and Subnet Mask.

- a. Go to ‘Control Panel’, doubleclick ‘Network Connections’.
- b. Right Click on ‘Local Area Connection’ and select ‘Properties’.
- c. On the Local Area Connections Properties window, select the ‘Internet Protocol (TCP/IP)’ item in the list and then click the ‘Properties’ button.
- d. Click the ‘Use the following IP address:’ button and enter the following values: IP Address 10.191.254.254, Subnet Mask 255.240.0.0, and leave default gateway blank
- e. Click OK

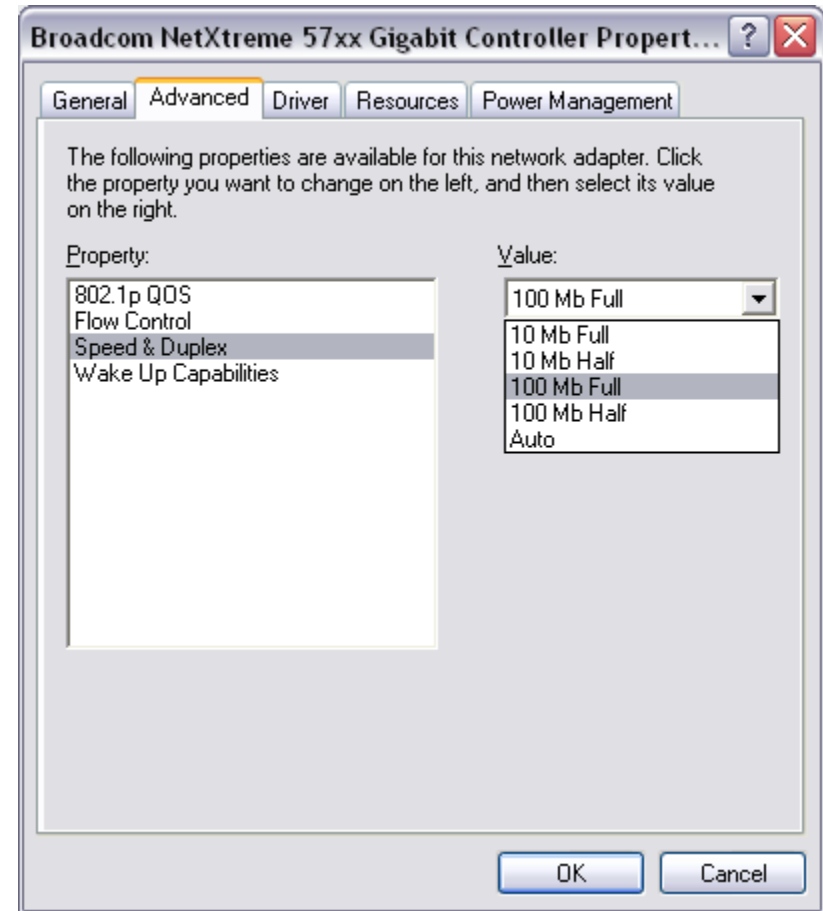
IP (TCP/IP) Properties



Manually configure NIC Speed and Duplex settings

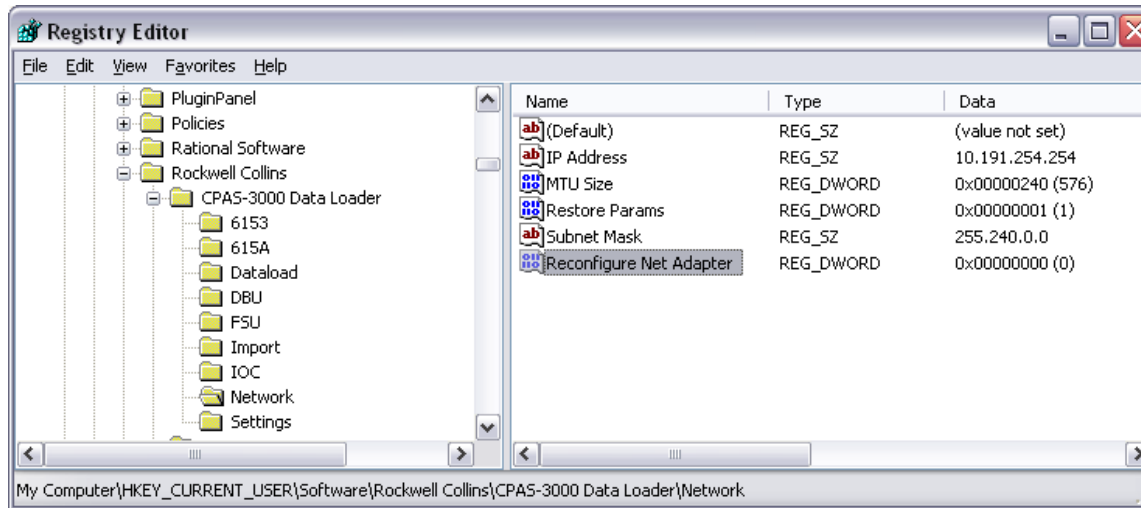
On the ‘Local Area Connection Properties’ window continuing from the above instructions, click the ‘Configure...’ button. If it asks you if you want to proceed click “yes

You will need to set up your speed and duplex settings. The exact tab name may be different for your PC but the concept is the same. If there is a tab called “Link Speed” use that tab or it may be under the advanced tab. In any case you will want to set your link speed and duplex to 100Mb Full Duplex (100 Mb Full).



Disable CPAS NIC Reconfigure Process

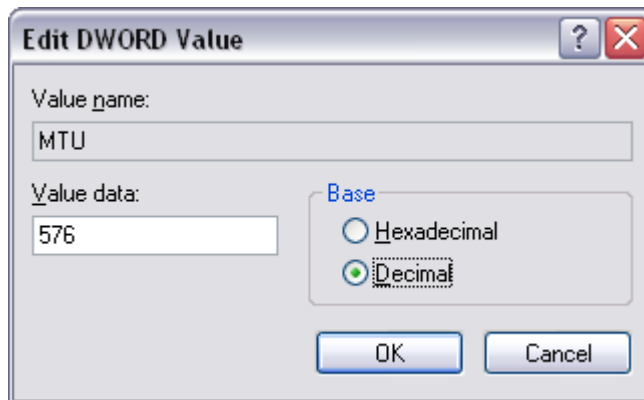
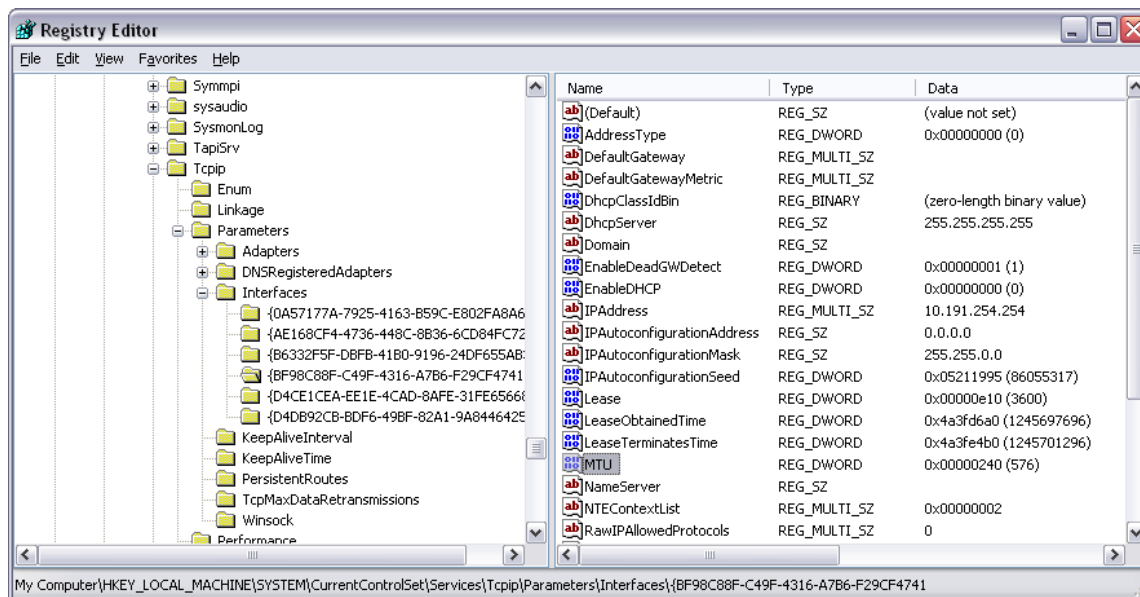
- a. Run 'regedit' and navigate to "HKEY_CURRENT_USER\Software\Rockwell Collins\CPAS-3000 Data Loader\Network".
- b. Select Edit -> New -> DWORD Value. Set the name of the value to "Reconfigure Net Adapter" and make sure the value is set to 0. This value tells CPAS not to do the network card reconfiguration on startup and shutdown.



Manually Set NIC setting for CPAS operations MTU

- a. In 'regedit' navigate to
HKEY_LOCAL_MACHINE\SYSTEM\CurrentControlSet\Services\Tcpip\Parameters\Interfaces.
- b. Underneath that branch is a separate branch for each network adapter on your system. The adapters are listed out by their GUID, so to try to match up the one you want you'll either have to check each branch and try to match by the IP \ Subnet values shown under the key (see step 2d). Once you've found the branch for your network adapter, Select Edit -> New -> DWORD Value. Set the name of the value to "MTU". Set the value to Decimal 576

Manually Setting NIC setting for CPAS operations MTU value to 576



Final Steps

- a. Restart the Laptop.
- b. Connect to a FSU and test for proper operation. If the load fails during the start of the load (.LUH file) then there is likely a problem with the MTU setting, double check that the MTU setting of the NIC in the registry is decimal 576. If the load fails during intermittent times during the load make sure that the NIC speed and duplex settings are set to 100Mbps full duplex.



CPAS Resource's

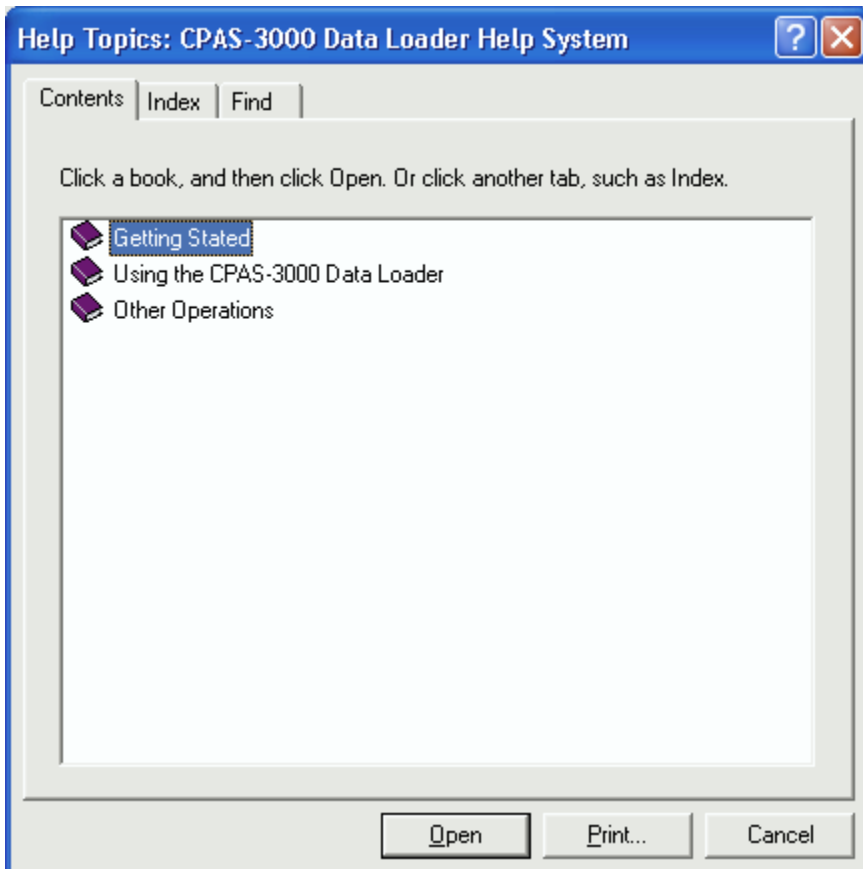
CPAS Handout

Help Index in CPAS
Tutorial

Operator's Guide CD

Call Collin's Experts

Stop Let System
Recover – Try Again





For more information, visit
rockwellcollins.com
or call 319-295-5000