



Pro Line 4™ to Pro Line 21™ Upgrade Program for Beechjet 400A

Ref. No. 2013-105M

Pub Date 08/2013



Photo courtesy of Beechcraft Corporation

Upgrade your Pro Line 4™ flight deck with Pro Line 21™ LCD displays and bring next generation integrated display and situational awareness to your flight deck.

Pro Line 21 LCD displays offer advanced functional capabilities and reliability for your Pro Line 4 flight deck. Rockwell Collins is offering the opportunity to replace your Pro Line 4 CRTs with three or four Pro Line 21 LCD displays. This cost effective upgrade brings the graphics capabilities to your Pro Line 4 system that are now being delivered on new aircraft.

The new graphics capabilities unlocked with the Pro Line 21 Active Matrix Liquid Crystal Displays (AMLCD) provide a path to paperless flight deck while providing a higher level of operational efficiency and convenience. This upgrade puts all of the information pilots need at their fingertips.

- Electronic Charts including Chartlink™ from FMS
- XM Graphical Weather (Optional)
- Data link Weather from Universal Weather (Optional)
- Enhanced Navigation MAPS

The majority of the Pro Line 4 on-board avionics sensors are retained with the Pro Line 21 update. At the same time upgrading key sensors that are important for meeting tomorrow's mandates and increasing operational efficiencies while positioning the cockpit for the next generation capabilities.

- GPS-4000S – The WAAS-enabled GPS-4000S allows you to take advantage of LPV approach capability, fly more efficiently, and streamline flight procedures. The GPS-4000S will be required for the ADS-B out DO 260B certification.
- DBU-5010E – The DBU-5010E simplifies and reduces the amount of time spent loading databases on your aircraft. Database management can be further streamlined by adding an IMS-3500 and the Rockwell Collins Ascend Information Manager (AIM) subscription service.
- AHC-3000A – AHC-3000A provides increased performance, reliability, and functionality and is an essential part of the LPV solution.

**Rockwell
Collins**

ADVANCED SYSTEMS. SUPERIOR CAPABILITIES.

LARGE-FORMAT CONFIGURABLE PFDS AND MFDS

The introduction of large-format LCD displays with the ability to deliver more information in ways that improve understanding, awareness and safety has virtually revolutionized the modern cockpit. That's why the Pro Line 4 to 21 upgrade package features four large-format, (8 x 10) Ethernet capable liquid crystal adaptive flight displays with LED back lighting. These displays position the aircraft for future growth to Synthetic Vision System (SVS) and offer the clearest, sharpest, most advanced displays in the business. now, critical flight information including graphical weather, EGPWS, TCAS, lightning detection, airport location and more are available to you at the touch of a button.

The Pro Line 21 configurable display solution allows operators to choose from a growing list of third party interfaces Configurable Data Concentrator Units (DCU) also allows a common equipment to be used for both the legacy JT-15D engine interface as well as the FADEC controlled FJ 44 giving our customer the power to choose what is important for them. To determine compatibility, please contact your Rockwell Collins Regional Sales Manager.

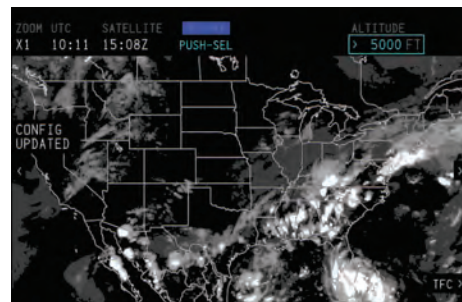
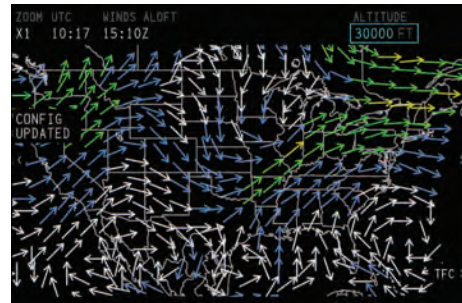
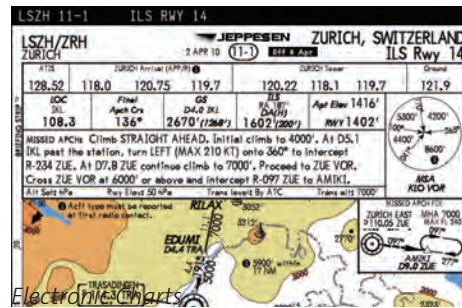
KEY BENEFITS

- > Large format configurable displays with LED back lighting
- > All displays are Ethernet capable to support growth to SVS
- > Improved situational awareness
- > Integrated Engine Indication System (EIS)
- > Enhanced aircraft value
- > XM Graphical Weather (ConUS only)
- > FMS Chartlink™
- > LPV FMS navigation
- > Wall to wall ADI presentation
- > Display of nTSC Video on MFD
- > Growth path for future functionalities
 - Synthetic Vision System (SVS)
 - Multiscan Weather Radar
- > Two year CASP warranty on remaining Rockwell Collins cockpit avionics equipment.

INTEGRATED FLIGHT INFORMATION SYSTEM (IFIS)

ELECTRONIC CHARTS

IFIS provides high resolution electronic charts. Through integration with the aircraft GPS, the aircraft symbol can be displayed with geo-referenced approach, departure and airport charts, allowing flight crews to monitor actual aircraft position. As a result, operating at night, in low visibility conditions or at unfamiliar airports becomes easier and more intuitive. Pan and zoom features, as well as selectable day or night mode operation, allows for easier viewing.



Paperless operation approval can be attained with the dual MFD and dual FSU solution. Paperless operational approval is achieved through your local certification office.

FMS CHARTLINK™

We pioneered Chartlink™, an application that automatically updates and reconfigures IFIS chart information when the FMS flight plan is loaded or modified. For example, if weather causes a last minute flight plan change, Chartlink provides an updated set of charts at the touch of a button.

GRAPHICAL WEATHER

With IFIS, pilots have a powerful new tool to help them make more strategic decisions about their flight plans. Pilots can look at the big weather picture prior to and during the flight as weather develops. Rockwell Collins IFIS offers two distinct weather service options, XM Satellite Weather and Universal Weather services.

XM Satellite Weather (optional) is a continuous broadcast weather service offered in the Continental United States (ConUS):

- > NEXRAD (1 nM Resolution)
- > Echo tops and movement
- > Graphical and textual METARs
- > Textual AIRMETS and TAFs
- > TFR's and SIGMETs
- > Lightning
- > Satellite images
- > Winds aloft

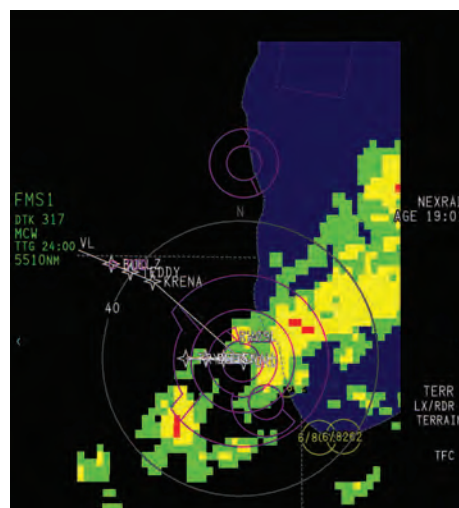
Universal Weather (optional), for aircraft equipped with data link, is a service offered worldwide

- > NEXRAD images (Continental United States, 7 nM Resolution)
- > NEXRAD with tops/movement (Continental United States)
- > Icing
- > Winds/temps
- > Turbulence
- > Weather depiction

ENHANCED NAVIGATION MAPS

The enhanced graphical capabilities of IFIS can provide overlays to the traditional navigation maps with the following:

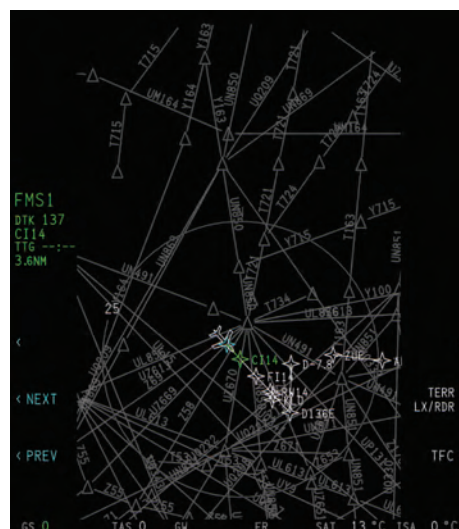
- > Geographic features such as rivers, lakes and oceans
- > Political boundaries such as national and state borders
- > Controlled, restricted and prohibited airspace
- > High and low airways



Geographic features and Political boundaries with XM weather overlay



Controlled, Restricted Prohibited airspace



High and low airways

LPV FMS (optional)

Localizer Performance with Vertical Guidance (LPV) provides pilots unprecedented access to runways and airports that do not have an ILS with Cat 1 approach minimums as low as 200' and half mile visibility. There are currently over 2,900 LPV approaches published in the US, with plans to add more than 300 per year. The Beechjet 400A Pro Line 4 to 21 upgrade program includes an updated FMS with fully integrated LPV approaches. Your aircraft must be equipped with dual GPS-4000S receivers to take advantage of this new feature. Forth coming ADS-B out mandates will require GPS-4000S receivers.

NTSC VIDEO on MFD (optional)

The display of video, in an nTSC format, is presented on the lower half of the MFD. Video sources may be EVS, surveillance, or informational camera's. Multiple video sources may be selected via an external switch.

- > Display of nTSC video on the MFD compatible with:
 - Max-VisR EVS-1000
 - L3 IRISTM
 - Kollsman GAViSTM
 - CMC Electronics CMA-2600, CMA-2610



NTSC Video on MFD

PROTECTING YOUR INVESTMENT TODAY OR TOMORROW

Rockwell Collins has an on-going enhancement plan for the entire Pro Line 21 family of over 5,000 aircraft. This will provide the aircraft operators with an active upgrade path to ensure that the system you install today will be upgradable to meet upcoming technology advancement and regulatory demands. With Pro Line 21 in your aircraft, you are assured of always flying with the best.

2 YEAR WARRANTY PLUS CASP

Pro Line 4 to Pro Line 21 Upgrade Program for the Beechjet 400A comes with a comprehensive two year equipment warranty. Additionally, Rockwell Collins will provide warranty coverage via its Corporate Aircraft Service Program (CASP), for all remaining Rockwell Collins flight deck avionics on the aircraft. This provides operators full no charge access to repair and exchange services along with R & R services through the Rockwell Collins dealer organizations.

TERMS AND CONDITIONS

Unless otherwise noted, this program is valid for orders placed between August 1, 2013 and December 31, 2013 with delivery requested by April 1, 2014.

Warranty period for this program is two years for new equipment, and one year for modified equipment. Standard warranty does not apply to software.

SUBSCRIPTIONS

Electronic Charts

JEPPESEN
55 Inverness Drive East
Englewood, CO 80112-5498
Phone: 800.553.7750 or 303.328.4244
Fax: 303.328.4124
www.jepesen.com

Enhanced Map Overlays

FMS and Data Base Support
400 Collins Road NE
Cedar Rapids IA 52498
Phone: 319.295.5000
Fax: 319.295.8757
<http://www.rockwellcollins.com/FMS/main.asp>

XM Weather

XM Satellite Radio
Listener Care Center
Phone: 800.985.9200

How can we help?

Please call Rockwell Collins Customer Support at 319.295.5000.

Building trust every day.

Rockwell Collins delivers smart communication and aviation electronic solutions to customers worldwide. Backed by a global network of service and support, we stand committed to putting technology and practical innovation to work for you whenever and wherever you need us. In this way, working together, we build trust. Every day.

For more information contact:

Rockwell Collins
400 Collins Road NE
Cedar Rapids, Iowa 52498
319.295.4085
email: csmarketing@rockwellcollins.com
www.rockwellcollins.com

**Rockwell
Collins**