

COLLINS AEROSPACE ECMT Importing from RCCT PRESENTATION

April 2019



CASE ECMT: Importing from RCCT

TABLE OF CONTENTS

- Overview
- RCCT Export
- New Blank Dataset
- Import
- Results

CASE ECMT: Importing from RCCT

Overview

The Electronic Checklist Management Tool (ECMT) supports importing a dataset from the Rockwell Collins Checklist Tool (RCCT) via an AMI or XML file.

- Import is accomplished in the following steps:
 - Export from Legacy RCCT as:
 - AMI File
 - XML File
 - Create a new empty dataset in EMCT
 - Create a Work Package for the empty dataset
 - Use the Import feature in ECMT

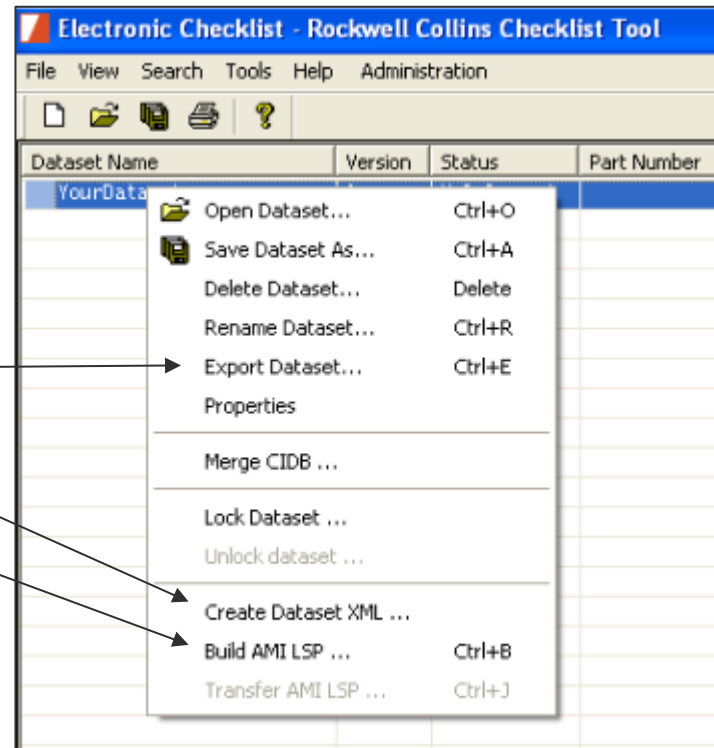
CASE ECMT: Importing from RCCT

RCCT Export

Build or export the desired dataset from RCCT. This can be accomplished by:

- The Export Dataset command (XML file)
- The Create Dataset XML command (XML file)
- The Build AMI LSP command (AMI file)

1. In RCCT, right click the target dataset
1. From the right click menu, select a build option:
 - Export Dataset
 - Create Dataset XML
 - Build AMI LSP

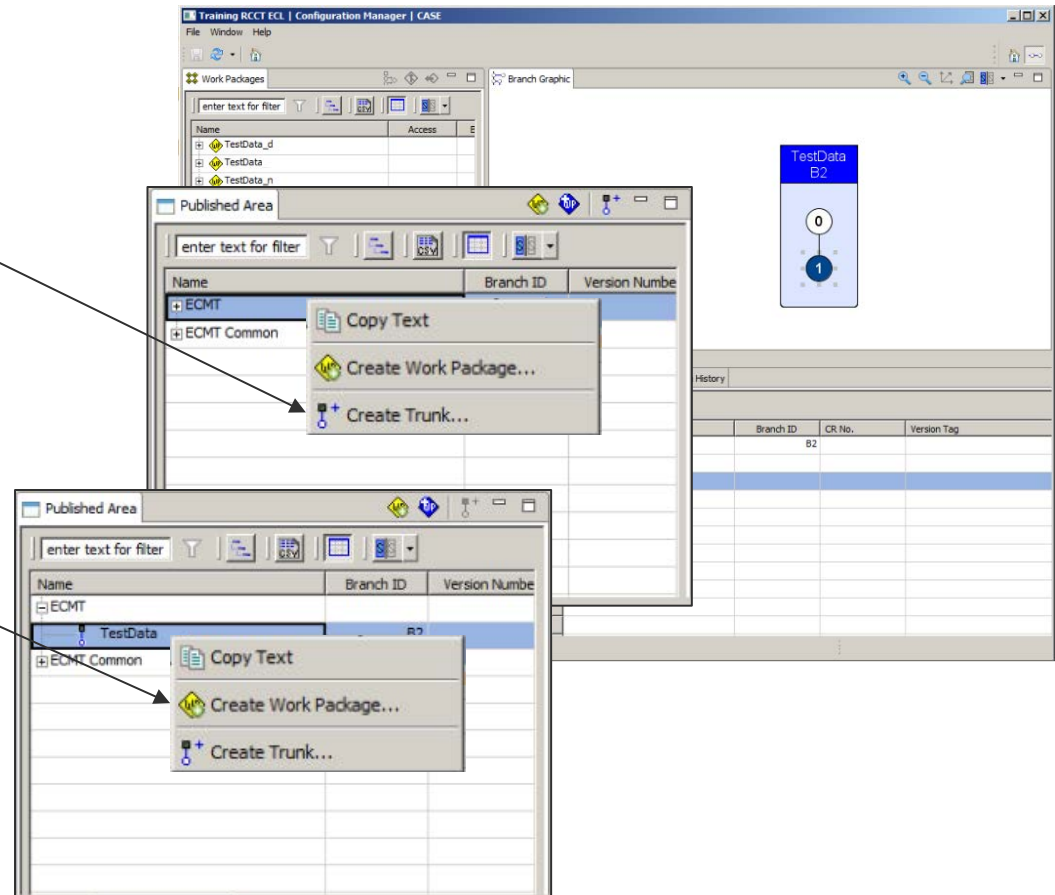


CASE ECMT: Importing from RCCT

New Blank Dataset

Next you will need to create a blank dataset in ECMT to hold the data:

1. In ECMT, open Configuration Manager
1. In the Published Area, right click the ECMT root node and select Create Trunk
1. Fill in the required fields of the Create Originating Dataset dialog and select the Create button when ready
 - o See Config Management Basics for more info
1. Back in the Published Area, right click the new dataset and Select Create Work Package
1. Fill in the required fields of the Create Work Package dialog and select the Finish button when ready
 - o See Config Management Basics for more info

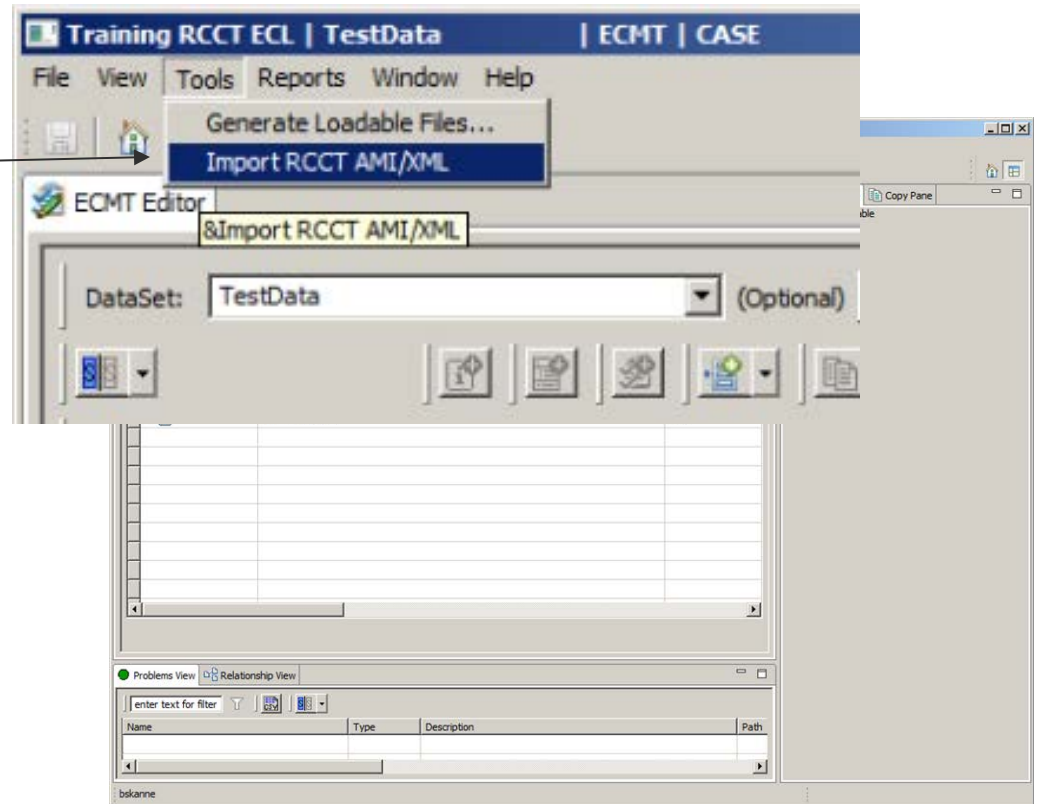


CASE ECMT: Importing from RCCT

Import

Now we are ready to import:

1. Open ECMT for the newly created Work Package
1. Select "Import RCCT AMI/XML" from the Tools menu.



CASE ECMT: Importing from RCCT

Import

The Import process will you prompt for:

- Target file
- Log output path
- User Acceptance

1. Select an input file

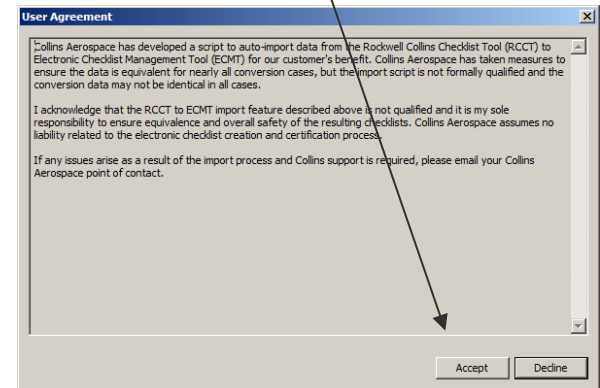
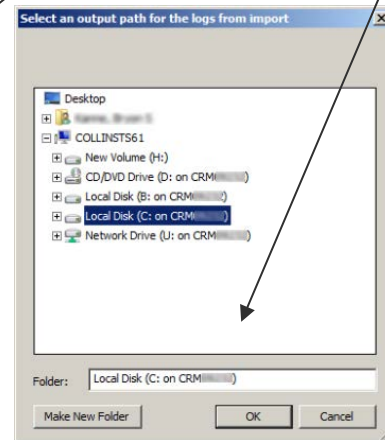
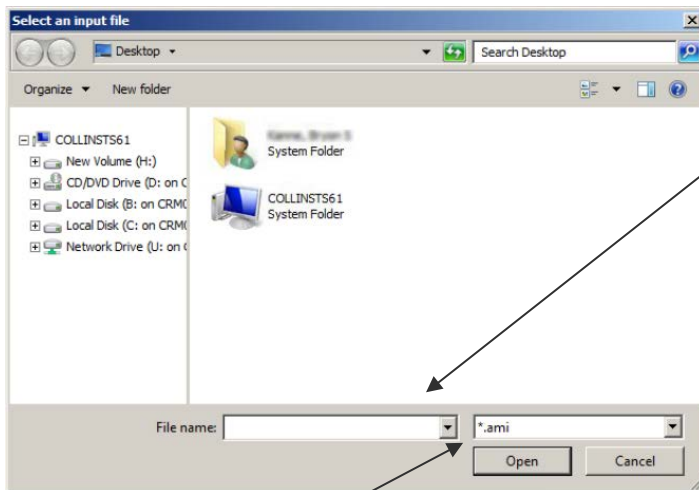
1. Click Open

1. Select a folder for the log from the import

1. Click OK

1. Click Accept for the User Agreement

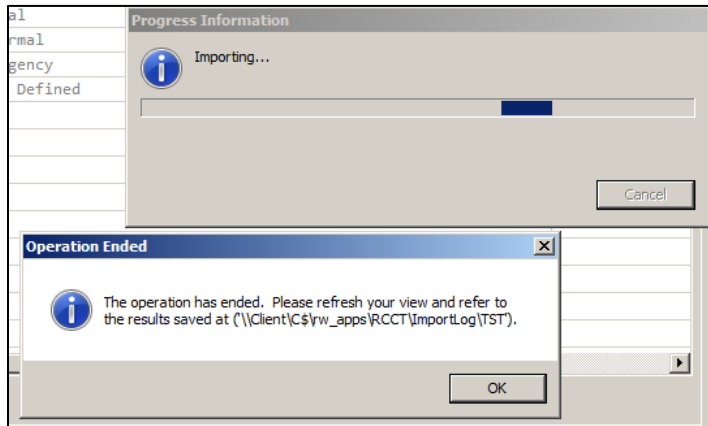
- Please read this carefully
- The import will begin once the agreement is accepted



○ You may need to toggle the file extension filter to get your file to appear.

CASE ECMT: Importing from RCCT

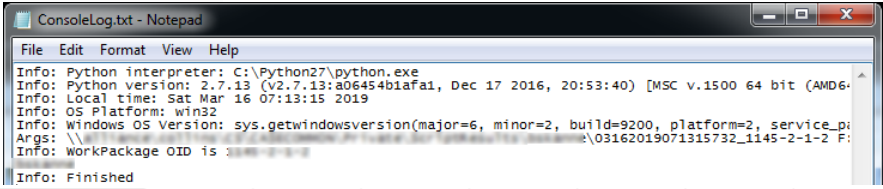
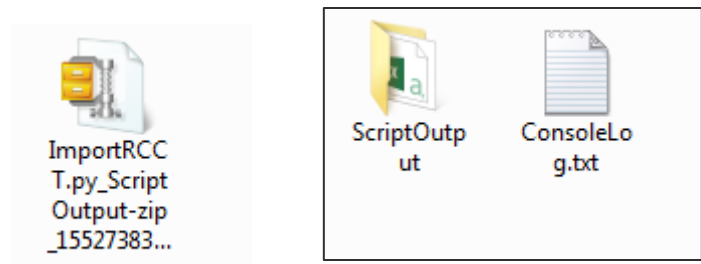
Results



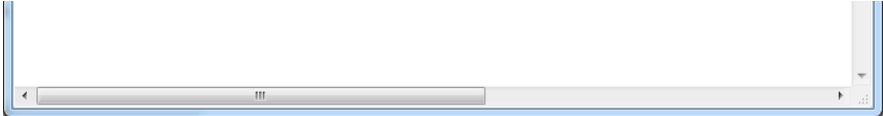
- When finished, you will see a message that the operation has ended.
- The imported data is now present in the Work Package, and any errors or warnings will be noted in the log file saved at the indicated output path.
- The import will show this message regardless of whether the import was completely successful or not. So it is important to review the returned log.

CASE ECMT: Importing from RCCT

Results



	A	B	C	D	E	F	G	H
1	<module>	INFO	Importing new CIDB					
2	<module>	INFO	Dataset already had a CIDB specified; Import will not update it.					
3	runImport	INFO	Importing for root Normal					
4	runImport	INFO	Importing for root Abnormal					
5	runImport	INFO	Importing for root Emergency					
6								
7								



- The logs from importing are saved in a ZIP file at the given path.
- Open the zip file and extract the ScriptLog.csv from the ScriptOutput folder.
- Open the ScriptLog.csv and review it for any errors or warnings.
- After import, ECMT will need to be refreshed to show the newly created data. You may now review the resulting checklists and make any corrections as necessary.