



29 April 2022

Cycle 2204-01

FORWARD TO CHIEF PILOT IMMEDIATELY

***** High Resolution Terrain Database *****

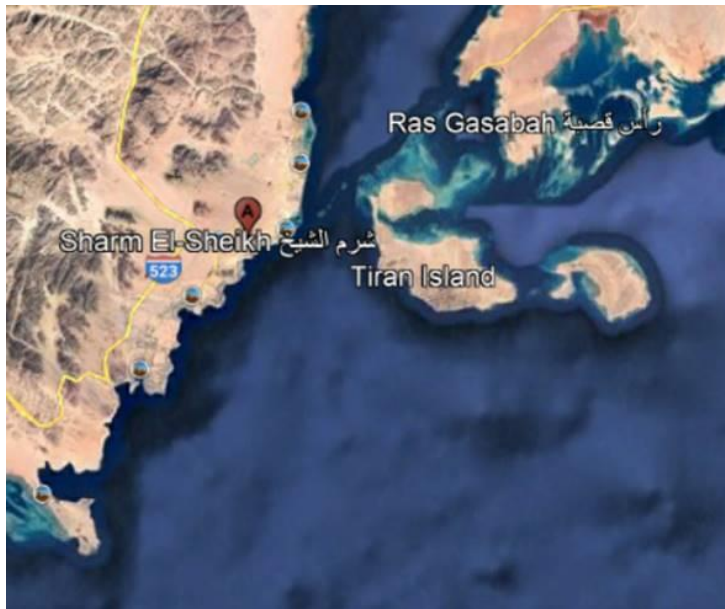
To: Customers who use HRTDB
From: Aeronautical Data Services Technical Support
SUBJECT: High Resolution Terrain Database v6 – HESH

OVERVIEW

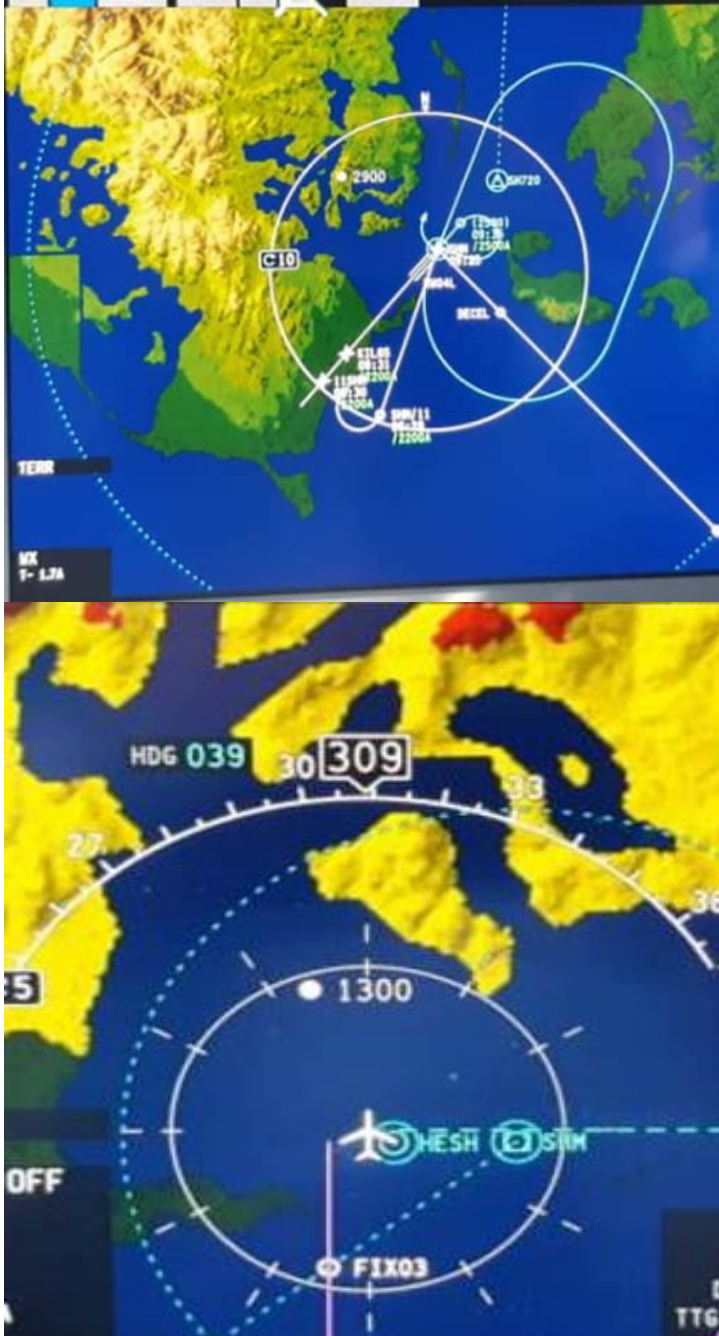
It has come to our attention that the terrain surrounding Sharm El Sheikh airport (HESH) is rendering incorrectly in the Synthetic Vision System (SVS)

DETAIL

HESH is located near the southern tip of the Sinai Peninsula in Egypt:



However, the terrain data for the Sinai Peninsula is rendering incorrectly on the display map, causing HESH to appear as if it is in the ocean.



The mapped location of the airport itself is correct per the navigation database, but the surrounding terrain is rendering incorrectly.

FUTURE

The effort to correct this issue is ongoing, but currently there is no estimated time completion. If you have questions regarding this Flight Alert, please contact Collins Aerospace, Aeronautical Data Services via email at CollinsDatabaseTech@RockwellCollins.com

WE URGE YOU TO MAKE THIS INFORMATION AVAILABLE TO APPROPRIATE PERSONNEL